

-- ANNOUNCEMENT 1963-64 -- Volume 37 - No. 1



Louise Cruthard
Registrar's Office

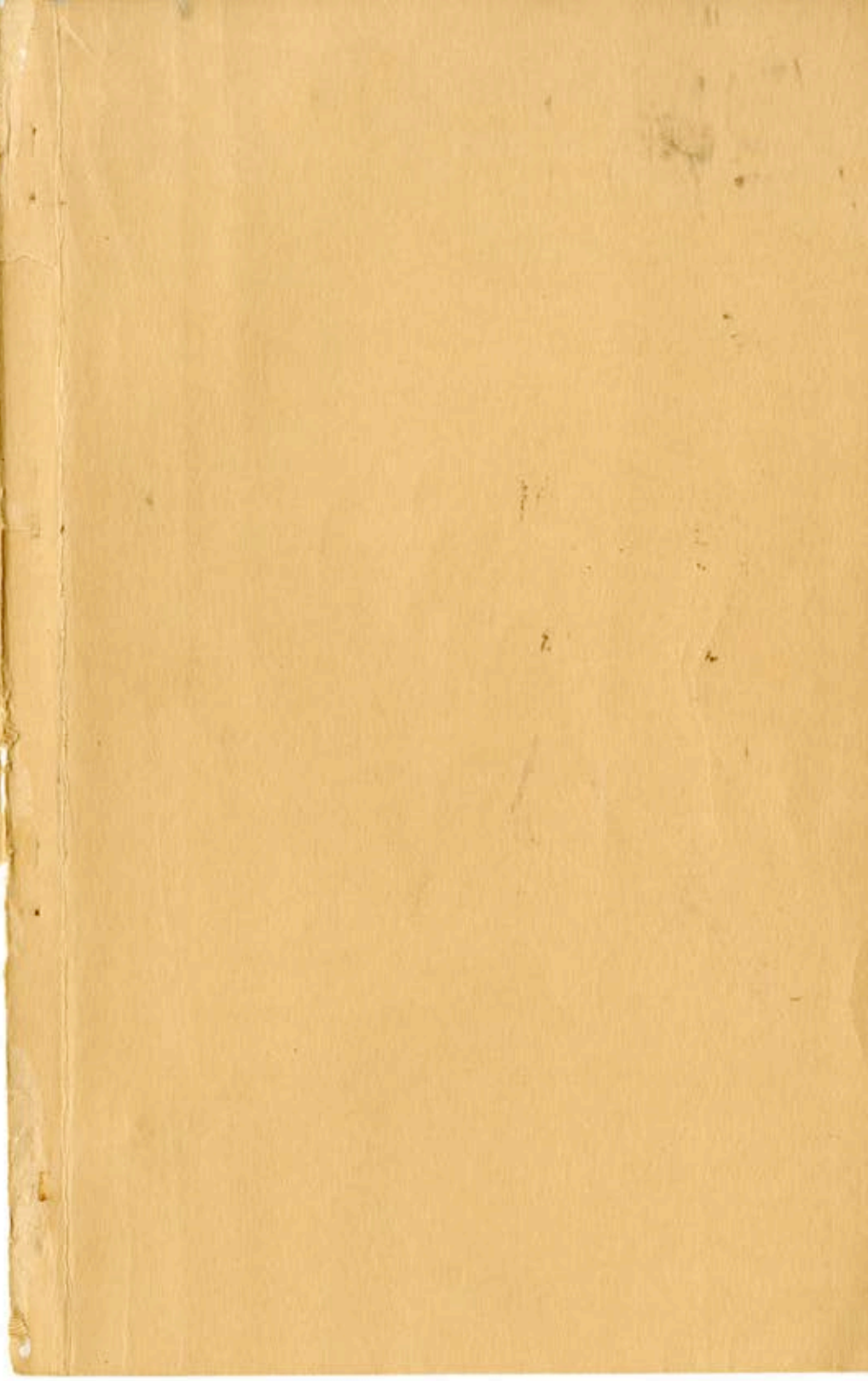
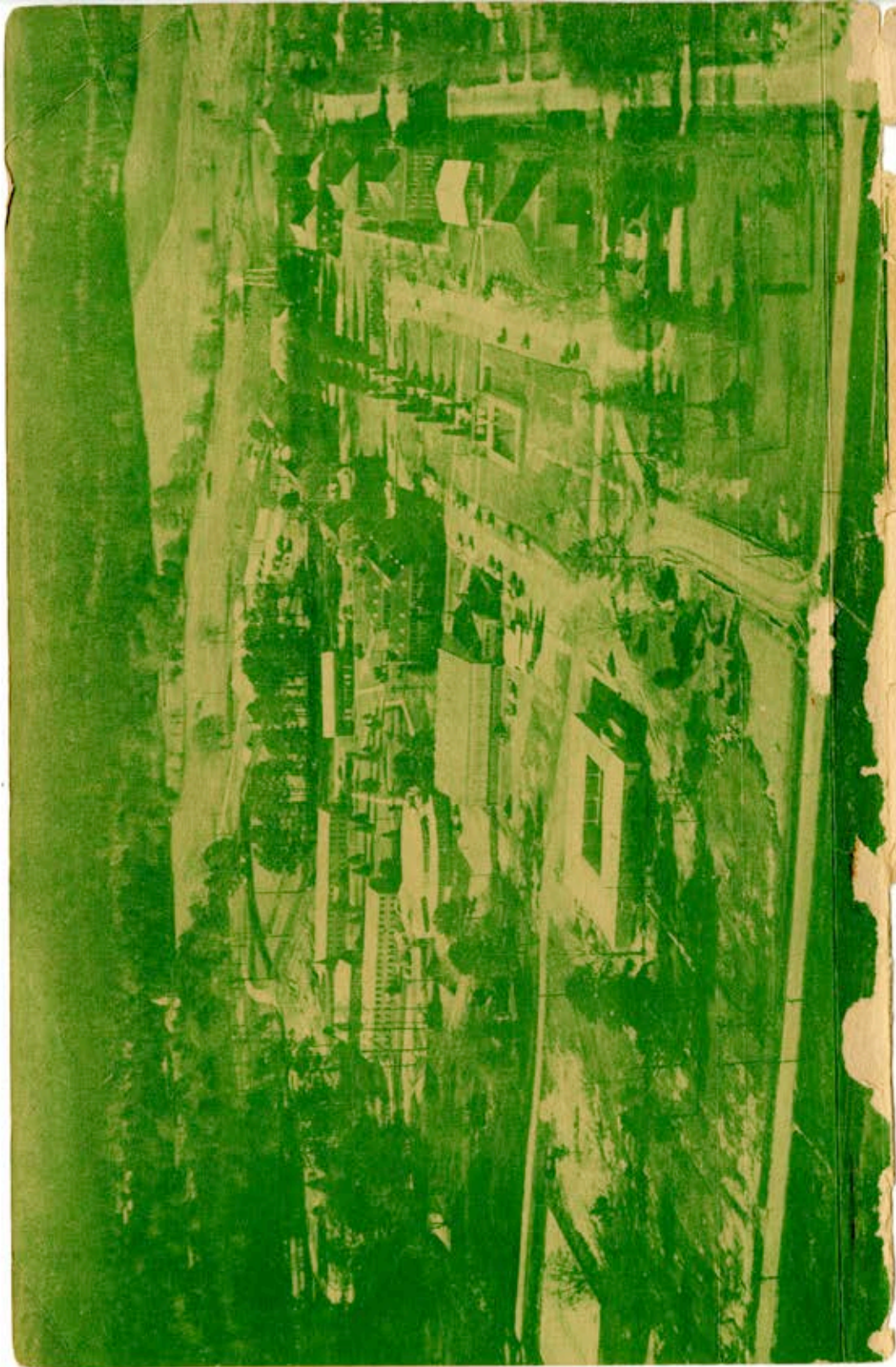
Perkinson College

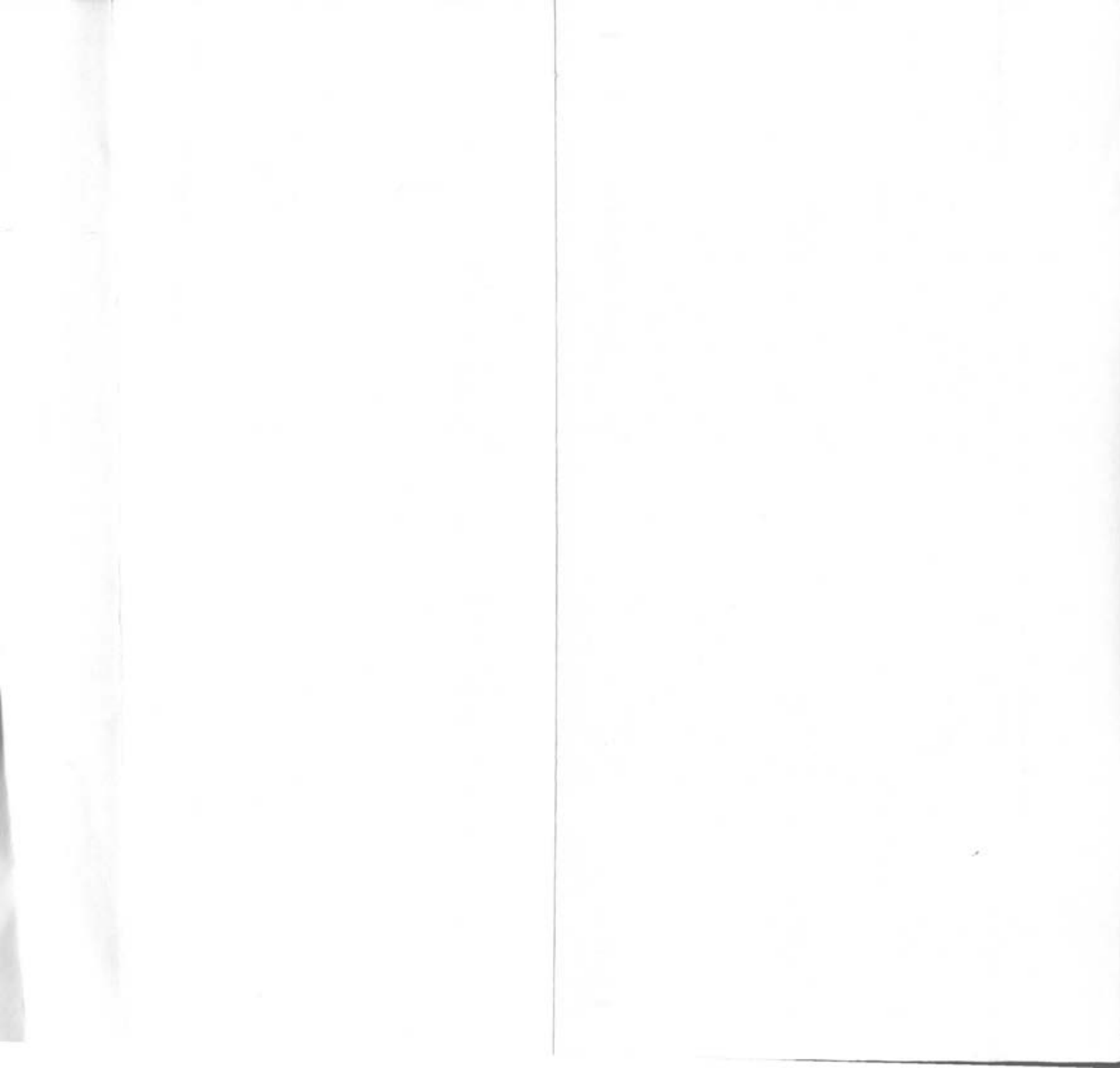
Perkinson, Mississippi

BULLETIN

50 CMTAL
1962-1963

664





PERKINSTON COLLEGE BUILDINGS — GROUNDS

STRUCTURES

1. PRESIDENT'S RESIDENCE
2. GYMNASIUM (OLD)
3. DARBY BUILDING (ADMINISTRATION—LIBRARY)
4. DENSON HALL
5. JACKSON HALL (BOYS)
6. HUFF HALL (BOYS)
7. RESIDENCE
8. CLASS ROOM & LAUNDRY
9. BENNETT BLDG. ANNEX
10. BENNETT BLDG.
11. "Y" HUT
12. STONE HALL (BOYS) & LIBRARY ANNEX
13. FAHNESTOCK HALL (TEACHERS)
14. HARRISON HALL (GIRLS)
15. WENTZELL CENTER (GYM—STUDENT C.)
16. SWIMMING POOL
17. HINTON SCIENCE BLDG.
18. TENNIS COURTS
19. HEIDELBERG HALL (CAFETERIA & MUSIC)
20. APARTMENT BUILDING (TEACHERS)
21. WAR MEMORIAL CHAPEL
22. GEORGE HALL (BOYS)
23. SMITH BUILDING (CLASS ROOMS)
24. FIRE STATION
25. ATHLETIC OFFICE
26. A.L. MAY MEMORIAL STADIUM
27. STORAGE HUTS
28. COLMER BUILDING
29. WOOD SHED
30. MAINTENANCE SHOP
31. GARAGES
32. BARN
33. DAIRY BARN
- 34-44. RESIDENCES
45. POND
- 46-51. RESIDENCES
52. HOME ECONOMICS BLDG.
- 53-54. RESIDENCES

SYMBOLS

- ROADS
- CONCRETE WALKS
- FIRE HYDRANTS

LEGEND

- BUILT — 1910—1920
- BUILT — 1920—1930
- BUILT — 1930—1940
- BUILT — 1940—1950
- BUILT — 1950—1960
- BUILT — 1960 —



PERKINSTON COLLEGE

A DIVISION OF THE

MISSISSIPPI

GULF COAST JUNIOR COLLEGE DISTRICT

CATALOG 1962-63

ANNOUNCEMENTS 1963-64

REGULAR SESSION BEGINS MONDAY, 2 SEPTEMBER 1963

VOLUME 37

NUMBER 1

TABLE OF CONTENTS

Air View of Campus

Foreword

Calendars

Supervisors, Trustees, Administration and Faculty

Part I — PERKINSTON'S PURPOSE AND OBJECTIVES

What Is A Junior College?

The Growing Point In American Higher Education

Perkinston's Half A Century Of Achievement And Accreditation

Perkinston's Promise

Part II — BUILDINGS, GROUNDS AND EQUIPMENT

Part III — ACADEMIC PROGRAM

A. General Academic Requirements and Regulations

Admission Requirements

Enrollment of Out-of-State Students

Admission Procedure

Special Students

Regular and Irregular Students:

Academic Load

Policy of Probation and Suspension

Withdrawal Procedure

Guidance Services

Pre-Registration Counseling

Orientation Program

English Requirement

Faculty Advisors

Personal Counseling

Faculty Counseling

Class Attendance

Assembly Attendance

Grading System

Examinations

Quality Points

Honors

Honor Roll

Awards and Medals

Requirements for Graduation

Numbering of Courses

B. Suggested Programs of Study

C. Alphabetical Listing and Description of Numbered Courses

Part IV — FINANCIAL INFORMATION

A. Expenses

Categories of Students (by costs)

List of Major Fees and Charges

Miscellaneous Fees

Refund Policy

Summary of Expenses

B. Student Aid: Scholarships and Student Labor

Part V — STUDENT LIFE AND ACTIVITIES

The Educational Purpose of Student Activities

The Student Council and Class Organizations

Alphabetical List of Currently Active Student Organizations in

Particular Fields of Interest

Campus Religious Life and Activities

Band and Choir; Campus Life and the Community

Student Discipline and Regulations

Alphabetical List of 1962-63 Graduates and Students, With Their
Addresses

Index

Map of Campus

FOREWORD

This **Bulletin**, embracing both a "Catalog" for 1962-63 and "Announcements" for the 1963-64 regular session, is designed to answer most of the questions about Perkinson College which can be answered in one conveniently sized annual publication. It is supplemented by a **Student Handbook**, issued to each member of the student body, and a **Faculty Handbook** - these two handbooks being revised when necessary.

HOW TO USE THIS BULLETIN

The plan of this **Bulletin** is shaped by its question-answering purpose. It assumes that the prospective student and parent will want to ask questions in the following categories:

- (1) The general purpose and objectives of Perkinson College: its philosophy and aims.
- (2) The physical plant and facilities available to the college for achieving its purpose.
- (3) The curricular and other services offered by the college to fulfil its purpose.
- (4) The cost of these academic and other services to the student; and the student employment and scholarship aids available to help meet the cost.
- (5) Student life and activities.

Hence, as the Table of Contents indicates, following after the listing of supervisors, trustees, administrative officers and faculty, the bulk of the **Bulletin** is divided into five numbered parts.

Part I — PERKINSTON'S PURPOSE AND OBJECTIVES — emphasizes the college's philosophy, aims and objectives, defining the place of Perkinson College in its regional, state and national higher-education setting.

Part II — BUILDINGS, GROUNDS AND EQUIPMENT — is a detailed description of the facilities at the Perkinson campus.

Part III — ACADEMIC PROGRAM — is obviously and logically the largest and most attention-requiring section of the entire **Bulletin**.

Because of its length and complexity, Part III is subdivided as follows (see also the Table of Contents):

- A. General Academic Requirements and Regulations.
- B. Suggested Programs of Study.
- C. Alphabetical Listing and Description of Numbered Courses.

Part IV — FINANCIAL INFORMATION — summarizes both expenses and the scholarship and other aids available to help meet these expenses.

Part V — is a summary of STUDENT LIFE AND ACTIVITIES, which can be supplemented by reference to the current **Student Handbook**.

Following the five-part exposition, this **Bulletin** includes an alphabetical listing of the past year's graduates and students, with their addresses — a feature which has been part of every **Bulletin** issued in Perkinson's half century of growth.

The Index at the end supplements and recapitulates the Table of Contents at the beginning, just as the map inside the back cover supplements and recapitulates the aerial view of the campus inside the front cover.

Since timetables and schedules are very important in planning, we begin this question-answering **Bulletin** with some sets of calendars: regular calendars for 1963 and 1964; and a combined school and financial calendar for the same two years, calling attention to the most important dates.

CALENDARS

1963

1964

JANUARY

S	M	T	W	T	F	S
		1	2	3	4	5
6	7	8	9	10	11	12
13	14	15	16	17	18	19
20	21	22	23	24	25	26
27	28	29	30	31		

FEBRUARY

S	M	T	W	T	F	S
				1	2	
3	4	5	6	7	8	9
10	11	12	13	14	15	16
17	18	19	20	21	22	23
24	25	26	27	28		

MARCH

S	M	T	W	T	F	S
				1	2	
3	4	5	6	7	8	9
10	11	12	13	14	15	16
17	18	19	20	21	22	23
24	25	26	27	28	29	30
31						

APRIL

S	M	T	W	T	F	S
		1	2	3	4	5
6	7	8	9	10	11	12
13	14	15	16	17	18	19
20	21	22	23	24	25	26
27	28	29	30			

MAY

S	M	T	W	T	F	S
		1	2	3	4	
5	6	7	8	9	10	11
12	13	14	15	16	17	18
19	20	21	22	23	24	25
26	27	28	29	30	31	

JUNE

S	M	T	W	T	F	S
					1	
2	3	4	5	6	7	8
9	10	11	12	13	14	15
16	17	18	19	20	21	22
23	24	25	26	27	28	29
30						

JULY

S	M	T	W	T	F	S
		1	2	3	4	5
6	7	8	9	10	11	12
13	14	15	16	17	18	19
20	21	22	23	24	25	26
27	28	29	30	31		

AUGUST

S	M	T	W	T	F	S
				1	2	3
4	5	6	7	8	9	10
11	12	13	14	15	16	17
18	19	20	21	22	23	24
25	26	27	28	29	30	31

SEPTEMBER

S	M	T	W	T	F	S
		1	2	3	4	5
6	7	8	9	10	11	12
13	14	15	16	17	18	19
20	21	22	23	24	25	26
27	28	29	30			

OCTOBER

S	M	T	W	T	F	S
		1	2	3	4	5
6	7	8	9	10	11	12
13	14	15	16	17	18	19
20	21	22	23	24	25	26
27	28	29	30	31		

NOVEMBER

S	M	T	W	T	F	S
				1	2	
3	4	5	6	7	8	9
10	11	12	13	14	15	16
17	18	19	20	21	22	23
24	25	26	27	28	29	30

DECEMBER

S	M	T	W	T	F	S
		1	2	3	4	5
6	7	8	9	10	11	12
13	14	15	16	17	18	19
20	21	22	23	24	25	26
27	28	29	30	31		

JANUARY

S	M	T	W	T	F	S
		1	2	3	4	
5	6	7	8	9	10	11
12	13	14	15	16	17	18
19	20	21	22	23	24	25
26	27	28	29	30	31	

FEBRUARY

S	M	T	W	T	F	S
				1		
2	3	4	5	6	7	8
9	10	11	12	13	14	15
16	17	18	19	20	21	22
23	24	25	26	27	28	29

MARCH

S	M	T	W	T	F	S
		1	2	3	4	5
6	7	8	9	10	11	12
13	14	15	16	17	18	19
20	21	22	23	24	25	26
27	28	29	30	31		

APRIL

S	M	T	W	T	F	S
		1	2	3	4	
5	6	7	8	9	10	11
12	13	14	15	16	17	18
19	20	21	22	23	24	25
26	27	28	29	30		

MAY

S	M	T	W	T	F	S
				1	2	
3	4	5	6	7	8	9
10	11	12	13	14	15	16
17	18	19	20	21	22	23
24	25	26	27	28	29	30
31						

JUNE

S	M	T	W	T	F	S
		1	2	3	4	5
6	7	8	9	10	11	12
13	14	15	16	17	18	19
20	21	22	23	24	25	26
27	28	29	30			

JULY

S	M	T	W	T	F	S
		1	2	3	4	
5	6	7	8	9	10	11
12	13	14	15	16	17	18
19	20	21	22	23	24	25
26	27	28	29	30	31	

AUGUST

S	M	T	W	T	F	S
				1		
2	3	4	5	6	7	8
9	10	11	12	13	14	15
16	17	18	19	20	21	22
23	24	25	26	27	28	29
30	31					

SEPTEMBER

S	M	T	W	T	F	S
		1	2	3	4	5
6	7	8	9	10	11	12
13	14	15	16	17	18	19
20	21	22	23	24	25	26
27	28	29	30			

OCTOBER

S	M	T	W	T	F	S
		1	2	3		
4	5	6	7	8	9	10
11	12	13	14	15	16	17
18	19	20	21	22	23	24
25	26	27	28	29	30	31

NOVEMBER

S	M	T	W	T	F	S
		1	2	3	4	5
6	7	8	9	10	11	12
13	14	15	16	17	18	19
20	21	22	23	24	25	26
27	28	29	30			

DECEMBER

S	M	T	W	T	F	S
		1	2	3	4	5
6	7	8	9	10	11	12
13	14	15	16	17	18	19
20	21	22	23	24	25	26
27	28	29	30	31		

COLLEGE CALENDAR 1963-64

Monday, **April 15, 1963**—Deadline for current students to select and reserve a room for the 1963-64 session by paying matriculation fee. After this date, current students lose their priority in reserving rooms.

Saturday, **August 10, 1963**—Students pre-registering after this date must wait until school begins for entrance tests; they will pay a \$6.00 testing fee and will register with the final group.

Friday, **August 30, 1963, 9:30 A. M.**—Faculty Pre-School Workshop begins.

Saturday, **August 31, 1963**—Continuation of Faculty Pre-School Workshop.

First Semester, 1963-64

Monday, **September 2, 1963**—Matriculation fee, first semester room rent, and first month's board and maintenance due. Also non-resident tuition for out-of-state students.

12:00 noon—Cafeteria opens.

1:00 P. M.—Dormitories open.

7:00 P. M.—Christian Council program in Gregory Chapel.

Tuesday, **September 3, 1963**

8:20 A. M.—General assembly in auditorium for all students.

8:45 A. M.—Sophomore registration

—Freshmen orientation.

1:00 P. M.—Freshmen begin registration.

—Testing of new applicants.

6:30 P. M.—Dormitory house meetings.

8:00 P. M.—Get-acquainted party in gymnasium for students and faculty.

Wednesday, **September 4, 1963**

8:15 A. M.—Freshmen continue registration.

1:00 P. M.—Freshmen complete registration.

6:00 P. M.—Picnic supper for students and faculty.

Students registering after this date will be charged a \$4.00 Late Registration fee and a \$6.00 Testing fee.

Thursday, **September 5, 1963**—Classes begin.

Monday, **September 9, 1963**, 8:00 P. M.—Formal reception for students and faculty.

Monday, **September 23, 1963**—Last day a student may withdraw from a course without receiving a grade.

Last day a student may enter a first-semester course.

Monday, **September 30, 1963**—Second month's board and maintenance due.

Friday, **October 11, 1963**—First Six-week term ends.

Monday, **October 28, 1963**—Third month's board and maintenance due.

Friday, **November 22, 1963**—Second six-week term ends.

Monday, **November 25, 1963**—Fourth month's board and maintenance due.

Wednesday, **November 27, 1963**—Thanksgiving holidays begin after Wednesday's classes and extend until 8:00 A. M., Monday Dec. 2.

Friday, **December 20, 1963**—after classes, Christmas holidays begin.

Monday, **January 6, 1964**, 8 A. M.—Classes resume after Christmas holidays.

Monday, **January 6, 1964**—Fifth month's board and maintenance due.

Friday, **January 17, 1964**—First semester ends.

Second Semester

Monday, **January 20, 1964**—Registration. Second semester matriculation fee and room rent due; also non-resident tuition for out-of-state students.

Tuesday, **January 21, 1964**—Registration continues.

Wednesday, **January 22, 1964**, 8:00 A. M.—Classes begin.

Students registering after 12:00 noon will be charged a \$4.00 Late Registration fee and a \$6.00 Testing fee.

Monday, **February 3, 1964**—Sixth month's board and maintenance due.

Monday, February 10, 1964—Last day a student may withdraw from a course without receiving a grade. Last day a student may enter a second-semester course.

Friday, February 28, 1964—Fourth six-week term ends.

Monday, March 2, 1964—Seventh month's board and maintenance due.

Wednesday, March 18, 1964—Spring holidays begin after Wednesday's classes and extend until 8:00 A. M. Monday, March 23.

Monday, March 30, 1964—Eighth month's board and maintenance due.

Friday, April 10, 1964—Fifth six-week term ends.

Monday, April 27, 1964—Ninth month's board and tuition due.

Sunday, May 17, 1964—Baccalaureate Sermon and Commencement Exercises.

Friday, May 22, 1964—Second semester ends.

Summer Session 1964

Monday, June 1, 1964—Registration. Students registering after this date will be charged a \$4.00 Late Registration fee.

Friday, July 3, 1964—First five-week summer term ends.

Monday, July 6, 1964—Second five-week term begins.

Friday, August 7, 1964—Ten-week session ends.

BOARDS OF SUPERVISORS

Harrison County

Laz Quave	Beat 1	Biloxi
Roy Dedeaux	Beat 2	Route 2, Gulfport
Nick French, President	Beat 3	Pass Christian
Gatha Ladnier	Beat 4	Saucier
Dennis Broadus	Beat 5	Saucier
C. J. Darby	Chancery Clerk	Gulfport

Stone County

John Dees	Beat 1	Wiggins
O. B. Brown, President	Beat 2	Route 2, Perkinston
Billy Parker	Beat 3	McHenry
Percy O'Neal	Beat 4	Perkinston
Leland L. Bond	Beat 5	Route 1, Perkinston
Hollie T. Bond	Chancery Clerk	Wiggins

Jackson County

Lum Cumbest	Beat 1	Route 2, Pascagoula
Edward Khayat	Beat 2	Moss Point
Maness Bartlett	Beat 3	Pascagoula
A. P. Moran, President	Beat 4	Ocean Springs
Olin Davis	Beat 5	Vancleave
Wilbur Dees	Chancery Clerk	Pascagoula

George County

Lloyd Eubanks	Beat 1	Lucedale
O. R. Bufkin, President	Beat 2	Lucedale
John Cochran	Beat 3	Lucedale
Robert L. Rouse	Beat 4	Lucedale
Reginald Green	Beat 5	Route 1, Perkinston
John L. Dale	Chancery Clerk	Lucedale

BOARD OF TRUSTEES

Harrison County

Roy Elder	Beat 1	Biloxi
Lyle Page	Beat 1	Biloxi
W. H. Caraway	Beat 2	Gulfport
W. H. Starr, Secretary	Beat 2	Gulfport
Donald Demetz	Beat 3	Pass Christian
John Furr	Beat 3	Pass Christian
R. J. Moran	Beat 4	Gulfport
Arthur Ball	Beat 4 and 5	Saucier
R. G. Carson	Beat 5	Route 1, Biloxi
Esco Smith	Supt. of Education	Gulfport

Stone County

W. W. Taylor	Beat 1	Wiggins
D. E. Smith	Beat 2	Perkinston
C. E. Dees, Jr., 1st Vice President	Beat 3	Perkinston
Attis O'Neal	Beat 4	Perkinston
Gordon G. Bond	Beat 5	Perkinston
Boyce L. Breland	Supt. of Education	Wiggins

Jackson County

G. M. Hamilton, 2nd Vice Pres.	Beat 1	Moss Point
R. A. Roberts	Beat 2	Moss Point
Warner Peterson	Beat 3	Pascagoula
G. H. Puhle	Beat 4	Ocean Springs
Norman V. Flurry	Beat 5	Perkinston
R. H. Slaughter, Jr.	County at Large	Pascagoula
N. P. Gautier	Supt. of Education	Pascagoula

George County

M. L. Malone, President	Beat 1	Lucedale
K. G. Brown	Beat 2	Route 2, Lucedale
M. L. Pope	Beat 3	Lucedale
M. C. Murrah	Beat 4	Route 3, Lucedale
W. T. Moore	Beat 5	Route 1, Perkinston
John Cooley	Supt. of Education	Lucedale

ADMINISTRATIVE OFFICERS

President	J. J. Hayden, Jr.
Dean of the College	W. P. Lipscomb, Jr.
Administrative Assistant in Charge of Business Affairs	L. A. Krohn
Coordinator of Vocational-Technical Education	Curtis L. Davis
Dean of Women	Mrs. Wilma Johnston
Acting Registrar and Director of Admissions and Guidance ..	C. G. Odom
Director of Student Personnel	H. T. White
Assistant Director of Admissions and Guidance	Charlie Probst
Director of Publicity	Eugene Clement
Librarian	James V. Burford

STAFF

Secretary to the President	Mrs. Wyvona B. Scarbrough
Office Manager	Mrs. Dorothy L. McHenry
Office Assistant	Mrs. Florence Rainwater
Secretary to the Registrar	Mrs. Willie Mae Bunch
Office Assistant, Registrar's Office	Mrs. Louise Cruthird
House Mother	Mrs. Lillian Hutchinson
Secretary to the Librarian	Mrs. Clarice Coker
Infirmary Nurse	Mrs. Marie Taylor
Supervisor of Buildings and Grounds	Edward A. Evans
Farm Manager	James Shill
Cafeteria Manager	Mrs. Lydean Davis
Manager of Student Center and Bookstore	Mrs. B. T. Price

FACULTY COMMITTEES

- Administrative Council:** Hayden, Krohn, Lipscomb, White, C. Davis, Clement, Johnston, Odom, Probst
- Admissions:** Odom, Hayden, Lipscomb, Johnston, White, Probst, Davis
- Assembly and Lyceum:** Moseley, Cooley, Carey, Presidents of Student and Christian Councils
- Audio-Visual-P. A.:** G. Moffett, C. Davis, Cowser
- Christian Council:** Dayton, Mrs. Lipscomb, Warren, Gillis, Mrs. Probst, Presidents of Christian Organizations.
- Curriculum:** Hayden—Lipscomb, Co-Chairmen

Division Chairmen

- | | |
|-------------------------------|------------------------------|
| Commerce and Industry | Miss Elaine Graves |
| Evening Programs | Charlie Probst |
| Fine Arts | Eugene Clement |
| Liberal Arts | Robert Couch, Chairman |
| | Miss Nora Graves, |
| | Miss Susie Cooley, |
| | Co-Chairmen |
| Library | James V Burford |
| Assistant Librarian | Gerald Buchanan |
| Science and Mathematics | K. P. Faust, Chairman |
| | Charlie Gammill, Co-Chairman |
| Vocational-Technical | Curtis Davis |

- Discipline:** Hayden, Lipscomb, White, Johnston, President of Student Council
- Faculty Housing:** Hayden, Lipscomb, Krohn
- Faculty Reception and Courtesy:** Moseley, Johnston, L. Davis, Cadle
- Graduation:** Clement, Jones, Johnston, Sponsors of Sophomore Class
- Guidance:** Odom, Lipscomb, Cooley, Probst
- Library:** Burford, Buchanan, Carey, Sansing, McInnis, Strickland, N. Graves, Ross, Munroe, Probst, Krohn, White
- Physical Education, Health Service and Athletics:** Weathers, Wesson, Sekul, Sumrall, White, Taylor, Ross, Farris
- Publications:** Clement, Finch, Lott, Sansing
- Scholarship:** White, Sansing, Cooley, N. Graves, Jones
- Student Housing:** White, Johnston, Odom, Dormitory Supervisors
- Social Life:** White, Johnston, Weathers, Sumrall, Ross, Presidents of Student and Christian Councils

FACULTY

(Dates in parentheses indicate first year of service at Perkinston College)

- J. J. Hayden, Jr. (1950) President
B. S. and M. S., Mississippi State University; additional study at University of Southern Mississippi
- Richard J. Beck (1955) Electronics
B. E. E., Polytechnic Institute of Brooklyn
- Jeanette Bounds (1961) Business Education
B. S., University of Southern Mississippi; additional study at University of Mississippi
- G. Woodfin Breland, Jr. (1959) Drafting
B. S., Mississippi State University; additional study, University of Southern Mississippi
- Gerald Buchanan (1960) Assistant Librarian
B. A., William Carey College; additional study at Louisiana State University
- James V. Burford (1962) Librarian
B. A., University of Mississippi; graduate study, George Peabody College; additional study at Columbia University
- Glen W. Cadle (1961) Business Education
B. S. and M. S., University of Southern Mississippi
- Kathryn M. Carey (1953) Music
B. M., Oberlin Conservatory of Music; M. M. E., University of Southern Mississippi; additional study at University of Pittsburgh, University of Colorado, Pennsylvania State College, New York University, University of Michigan, American University
- Charles G. Carter (1961) Social Studies
B. S., University of Southern Mississippi; graduate study at Louisiana State University
- Oscar Eugene Clement (1949) Director of Publicity, Music
B. M. and M. M., University of Southern Mississippi
- Vivian Coats (1962) Nursing
Diploma in Nursing, University of Tennessee School of Nursing; B. S., University of Mississippi
- Susie Cooley (1944) Languages
B. A., Mississippi State College for Women; M. A., George Peabody College; additional Study in Paris, France and Guadalajara, Mexico
- Robert F. Couch (1959) Social Studies
B. S. and M. A., University of Southern Mississippi

- Theo R. Cowser (1958) ----- Electronics
Graduate of Sioux Falls Air Force Technical School; Cooks Radio
Broadcast Engineering School; Keegans Technical Institute; addi-
tional study at University of Southern Mississippi
- Sylvester D'Aquilla (1960) ----- Mathematics
B. S. and M. S., University of Southern Mississippi
- ✓ Curtis Lee Davis (1950) ----- Vocational-Technical Coordinator
B. S., Mississippi State University; M. S. University of Southern
Mississippi
- Harry P. Dayton (1960) ----- Education and Psychology
B. A., Mississippi College; M. A., University of Southern Mississippi;
Th. M., New Orleans Baptist Theological Seminary; additional
study at Harding College and the University of Mississippi
- Randle J. Dedeaux (1949) ----- Surveying
B. S., Louisiana State University; M. F., Duke University
- *Lois Dickson (1960) ----- Nursing
Graduate of Toure Infirmary School of Nursing; B. S., University
of Southwestern Louisiana
- Kenneth C. Farris (1962) ----- Health, Physical Education
B. S., University of Southern Mississippi
- Addie Mae Faust (1957) ----- Science
B. S., Mississippi State College for Women
- K. P. Faust (1943) ----- Science
B. S., Millsaps College; additional study at University of Tennes-
see Medical School; University of Mississippi; University of South-
ern Mississippi
- Lillian Finch (1960) ----- Speech
B. A., Mississippi Woman's College; M. E., University of Southern
Mississippi
- Mary Elaine Graves (1958) ----- Business Education
B. S. and M. E., University of Southern Mississippi
- Nora Graves (1951) ----- English
B. A., Millsaps College; M. A., University of Mississippi; additional
study at the University of Wisconsin and Vanderbilt University
- Charlie W. Gammill (1959) ----- Mathematics
B. S., Delta State College; M. E., University of Southern Mississippi;
additional study at Mississippi State University
- Paul Gillis (1961) ----- Newman Club Chaplain
B. A., Providence College; S. T. B., Dominican College

- Lillian A. Hayden (1962) ----- Developmental Reading
B. S., University of Southern Mississippi; additional study at University of Southern Mississippi
- Martyne W. Hayden (1962) ----- Nursing
B. A., Oklahoma State University; Diploma in Nursing, Johns Hopkins University School of Nursing
- Millard W. Howie (1961) ----- Art
B. A., Centenary College; additional study at Art Students League of New York City
- * Thomas G. James (1960) ----- Research Services and Social Studies
B. A. and M. A., University of Mississippi; additional study at London School of Planning and Research for Regional Development; and Drexel Institute of Technology
- Gustaf Linwood Johansson (1962) ----- English
B. A., University of Southern Mississippi; M. A. George Peabody College.
- Sam P. Jones (1952) ----- Music
B. M., Southeastern Louisiana College
- Margaret Kingman (1960) ----- Director of Nursing
Diploma in Nursing, Loma Linda University; B. S. N. E., Columbia Union College; additional study at Woman's Hospital of New York City; University of Florida; West Virginia University
- Darlene Klaif (1962) ----- Nursing
B. S. N., University of Washington
- L. A. Krohn (1952) ----- Admin. Assistant in Charge of Business Affairs
B. S. and M. A., University of Southern Mississippi
- William P. Lipscomb, Jr. (1953) ----- Dean of the College
B. S. and M. A., University of Southern Mississippi
- Tina W. Lipscomb (1956) ----- Wesley Foundation Director
B. S., University of Southern Mississippi
- Lucas P. Lisotta (1962) ----- Speech
B. S., Northeast Louisiana State College; M. A., Louisiana State University
- Hershel Woodley Lott (1960) ----- English
B. S. and M. A., University of Southern Mississippi
- Nelda Lott (1960) ----- English
B. S., University of Southern Mississippi; additional study at University of Southern Mississippi

* Official leave of absence

- Kay McInnis(1960) ----- Business Education
B. S. and M. S., University of Southern Mississippi
- Jananna McInnis (1946) ----- Home Economics
B. S., Mississippi State College for Women; M. S. Mississippi State University
- Earline McRae (1961) ----- Nursing
B. S., University of Alabama
- Morris Maniscalco (1960) ----- Science
B. S., University of Southern Mississippi; additional study at University of Southern Mississippi
- Guy D. Moffett (1952) ----- Science
B. S. and M. A., University of Southern Mississippi, additional study at University of Texas and Bucknell University
- Winfred Moffett (1951) ----- Industrial Arts
B. S., Mississippi State University; M. S., University of Southern Mississippi
- Ellene Moseley (1956) ----- Mathematics
B. S. and M. A., University of Southern Mississippi
- Charles L. Munroe (1959) ----- Drafting
B. S., Carnegie Institute of Technology; Air Force Institute of Technology; Air War College; Industrial College of the Armed Forces; Air Corps Engineering School
- Carol New (1961) ----- Nursing
B. S., University of Mississippi
- Charles G. Odom (1955) ----- Acting Registrar and Director of Admissions and Guidance
B. S. and M. A., University of Southern Mississippi; additional study, Mississippi State University
- Berta Patton (1950) ----- Home Economics
B. S. and M. A., University of Southern Mississippi
- Alma D. Petty (1962) ----- Nursing
B. S., University of Tennessee School of Nursing; M. S., University of Maryland
- Charlie H. Probst (1959) ----- Assistant Director of Admissions and Guidance
B. S. and M. A., University of Southern Mississippi, additional study at University of Texas
- James H. Quina, Jr. (1962) ----- English
B. S., University of Auburn; M. A., University of Southern Mississippi; graduate study, Tulane University

- Homer Rainwater (1960) ----- Science
B. S., Mississippi State University; M. S., Indiana University; additional study, University of California at Los Angeles
- Barbara A. Ross (1960) ----- Health and Physical Education
B. S., University of Southern Mississippi; additional study at University of Southern Mississippi
- David G. Sansing (1960) ----- Social Studies
B. A. and M. A., Mississippi College
- Billy J. Scarbrough (1961) ----- Mathematics
B. S., Mississippi State University
- George Sekul (1961) ----- Health and Physical Education
B. S. and M. E., University of Southern Mississippi
- James Shill (1961) ----- Agriculture and Farm Manager
B. S. and M. S., Mississippi State University
- Harry W. Stamps (1962) ----- Social Studies
B. S. and M. S. E., Mississippi College
- Clinton L. Stewart (1963) ----- Auto Mechanics
Graduate of Carter Factory Carburetor School; Sun Electric School; General Motors Hydramatic Transmission School; Ford Fordamatic Transmission School; additional study at University of Southern Mississippi and Mississippi State University
- Don Herbert Stewart (1963) ----- Bible
A. B., William Carey College; B. D., New Orleans Baptist Theological Seminary
- Clyde Strickland (1960) ----- Science
B. S. and M. S., University of Southern Mississippi
- W. Leonard Sumrall (1958) ----- Health and Physical Education
B. S., Bethel College; additional study, University of Southern Mississippi
- Vivian Warren (1960) ----- Music
B. A., William Carey College
- Bennie T. Warren (1958) ----- Baptist Student Union Director
B. S., William Carey College; M. R. E., New Orleans Baptist Theological Seminary
- Robert W. Weathers (1960) ----- Health and Physical Education
B. S. and M. S., University of Southern Mississippi
- Harold Wesson (1962) ----- Health and Physical Education
B. S. and M. A., University of Southern Mississippi; additional study, George Peabody College
- Harold T. White (1951) ----- Director of Student Personnel
B. S. and M. E., University of Southern Mississippi

PART I**PERKINSTON'S
PURPOSE AND OBJECTIVES**

What Is a Junior College?

The Growing Point in American Higher Education

Perkinston's Half A Century
of Achievement and Accreditation

Perkinston's Promise

The basic purpose of Perkinston has never changed. The catalog announcing the first 1912 session stated: "The purpose of this school is to give as thorough preparation as possible for complete living . . . to educate as well as instruct, to form character as well as give information . . ."

The current statement of purpose, aims, and objectives as adopted by the DISTRICT BOARD OF TRUSTEES is as follows:

Purpose

The general purpose of this junior college is to develop the cultural, intellectual, and character resources of the people of this area, point the way to an economic livelihood based on natural resources, and promote responsible citizenship.

Specific Aims

Our more specific aims are to provide at the lowest possible cost:

1. General education.
2. Training for employment after leaving junior college.
3. Preparation for higher education.
4. Guidance: personal, educational, and vocational.
5. A wide variety of student activities.
6. Services as a community center.
7. Opportunities for cultural enrichment.

Provisions for Meeting Objectives

Perkinston Junior College, by various surveys and studies, has developed a curriculum to meet the needs of each individual student. It is apparent that the program of studies must be diversified, functional and practical, with an appeal to many types of student interest and ability.

The Perkinston Junior College Board of Trustees, the administration, the faculty, and the communities which support the college, are making sincere efforts to meet these objectives by the following means:

1. An intellectual program of studies.
2. A guidance program.
3. A number of work scholarships to enable students to earn part of their college expenses.
4. A Student Council.
5. A Christian Council.
6. A well-rounded program of student activities.
7. A worthwhile program of community services.

WHAT IS A JUNIOR COLLEGE?

Community junior colleges, closely associated with their own supporting districts in a planned statewide system, are an educational feature which Mississippi has helped pioneer.

What are community junior colleges? Where do they fit into the American educational pattern, and how important are they?

The **Report of the President's Commission on National Goals**, detailing its "Programs for Action in the Sixties", puts the junior college at the very center of its recommendations for higher education, emphasizing:

"... there should be roughly within commuting distance of every high school graduate ... an institution that performs the following functions:

- (a) offers two-year terminal programs for students not going on to a four-year college career.
- (b) offers transfer programs for students who do wish to complete a four-year program.

- (c) serves as a technical institute for the community, serving local needs for vocational and sub-professional education.
- (d) offers continuing education for adults."

The **Report** concludes: "These institutions have a critically important job to do."

The Southern Regional Education Board in its current report of The Commission on Goals for Higher Education in the South recommends that: "Each state should develop a strong system of two-year community colleges . . . neither mere extensions of the high school nor decapitated versions of the four-year college [they] can serve a variety of functions for which four-year institutions are not required. Among these are freshman and sophomore college courses, vocational and technical programs, guidance and counseling services, specific programs to meet community needs, and adult education."

The Board concludes: "The community college is economical for both student and taxpayer. It can be responsive to local needs and a vital force in the community."

The 1961 **Report of the Kellogg Foundation** summarizes: "The community college is one of the most significant educational innovations of this century . . . a complex multi-purpose institution which differs basically in character from both the senior college and the high school . . . a new and evolving entity created to meet the new demands and new functions of our rapidly changing society . . . No other type of college is tied so closely to the local community . . . Their programs are flexible, yet complete. One major phase provides **terminal curriculum opportunities** tailored to the industrial job-training needs of the particular community and expediting vocational retraining at a time when technological change is resulting in occupational disruptions and displacements. Another greatly significant curriculum area is that of **liberal arts and pre-professional courses** . . . not only to enhance culture and deeper understanding but also to facilitate the transfer of students to four-year colleges and universities for junior and senior classwork.

"And through activities serving people of all ages and economic classes and comprising literally thousands of hours of evening instruction, the community college also provides continuing education. In serving both youth and adults, these colleges place a strong emphasis on the instructional program, with a philosophy of giving needed individual attention to students and of confining classes to small units.

"More and more, the community college appears destined to become the normal stepping stone in higher education as the rising costs of financing state universities and other factors cause state legislatures to look for new solutions to the growing demand for mass education. The obvious answer is the assignment of upper division professional training, research, and graduate education to the university, and the allotment of lower division liberal arts, technical-vocational training, and adult education to local community colleges."

THE GROWING POINT IN AMERICAN HIGHER EDUCATION

Obviously, then, the community junior college is the growing point in American higher education, both nationally and regionally. It is this uniquely promising community-college pattern into which Perkinson will fit its second half-century of growth.

Perkinson, in fact, has helped to establish that pattern, having been in its first half a century a living witness of the junior college virtues of low cost, quality instruction, individual guidance and counseling, curriculum balance, administrative flexibility, and quick responsiveness to local needs.

PERKINSTON'S HALF A CENTURY OF ACHIEVEMENT AND ACCREDITATION

In the summer of 1911 the Harrison County School Board established the Harrison County Agricultural High School, which marked the beginning of the present institution. To induce the board to locate the school at Perkinson, C. C. Swetman, Walt Davis, Rev. R. N. Davis, W. W. Farnsworth, Van O'Neal, T. T. Garner, E. Garner, Dantzler Lumber Company, and a number of other citizens donated 656 acres of land and 626 dollars. In 1916 Stone County was formed from the northern part of Harrison County, and the two counties continued to operate the high school jointly thereafter.

Perkinson "grew up" in the 1925-26 session with the addition of a college freshman class, adding sophomore courses in the next year. In the summer of 1926 Jackson County joined Harrison and Stone Counties in support of the new two-year college curriculum; and George County added its support to the other three in 1941.

At the end of the 1961-62 session Perkinston discontinued operation of the high school; and in the same year approved a "master plan" for eventual expansion of the junior college to at least two new campuses to be located nearer the centers of population along the Gulf Coast strip — one in Harrison County and one in Jackson County — in addition to the existing Perkinston campus. In the same Fiftieth Anniversary Year, therefore, Perkinston ended one major chapter of its pioneering story and began a yet bigger one.

In May, 1962 the Governor of Mississippi signed into law House Bill 597 creating the Mississippi Gulf Coast Junior College District. Perkinston College operates as a part of this legal district.

Perkinston College is fully accredited by the Mississippi Association of Colleges, and the Southern Association of Colleges and Schools. This means that students transferring to other institutions will receive full recognition for credits earned at Perkinston provided the Perkinston courses are in line with courses to be pursued later.

PERKINSTON'S PROMISE

The 1961 Perkinston "Self Study", prepared by the faculty prior to evaluation by the Southern Association accrediting commission, summed up its analysis of Perkinston's purpose in these two paragraphs:

"The best evidence that the essential purpose of Perkinston Junior College is as fixed as a guiding star is the obvious awareness of each high school graduate within the four-county area that Perkinston has put college-level education within his reach. In this sense, Perkinston has long since achieved its basic goal — and will continue to achieve it.

"Having assured the promise of college education to every high school graduate in its area, Perkinston Junior College is now spelling out the same basic purpose to other age groups by expanding its curriculum scope as rapidly as firm demand areas become discernible. Here also, the ultimate purpose remains the same: that no potential college student — of any age, with any interest — will be "left out".

PART II

BUILDINGS, GROUNDS AND EQUIPMENT

Perkinston College is located on US Highway 49 at Perkinston, thirty miles north of the Mississippi Gulf Coast in the heart of the long-leaf pine region of Mississippi. Excellent highways make it readily accessible to all parts of the supporting area. Its proximity to a number of larger towns and cities makes it possible for students to explore a wealth of off-campus cultural opportunities.

The college owns 642 acres of land at Perkinston, 30 acres of which make up the main campus, with the remainder devoted to dairying and pasture, tree farming, and feed production. The campus buildings are conveniently located, and the grounds are beautifully landscaped.

The principal buildings are identified as follows (see map on inside of back cover).

Bennett Hall, a three-story brick building, is one of the original campus structures, which for a number of years has been used for high school classes.

(This structure is presently being used on a limited basis.)

Denson Hall, built in 1929, is a two-story brick structure housing the 700-capacity auditorium. The first floor contains business education department, and other classrooms. The office of the Director of Student Personnel is in the basement of this building.

Darby Hall, a two-story brick structure built in 1957, houses the administrative offices and the "book" portion of the library. (NOTE: The library, growing rapidly, now occupies a major portion of two buildings. The "book" library, on the second floor of Darby Hall above the administrative offices, currently shelves between nine and ten thousand books, and provides study table space for approximately 120 readers. Since October 1961, all periodicals and pamphlets have been housed in Stone Hall ground floor, which is being developed as a "serials" annex, with study table space for about 100 readers. Stone Hall ground floor also contains the Developmental Reading Center, and office, studio, and dark-room facilities for campus publications.

Smith Hall is a two-story brick veneer building constructed in 1947, which contains classrooms and faculty offices.

Hinton Hall is a modern fireproof structure specifically designed for science teaching. Built in 1959, it has no interior corridors; and access to all lecture rooms and laboratories is from a covered walkway around an open garden at the building's center.

Heidelberg Hall, constructed in 1959, houses the cafeteria and music teaching and practice facilities. The main floor of this single-story, three-level building is the cafeteria, which also includes a private dining and meeting room. Music facilities on two lower levels in an outer ring include band and choir rehearsal rooms, classrooms, practice and teaching studios.

Megehee Building. This new structure, occupied in the spring of 1962, contains a living suite and bedrooms, a foods laboratory and a clothing laboratory. (homemaking)

Wentzell Center, constructed in 1957, houses the campus bookstore, grill, and postoffice, in addition to the main gymnasium with a seating capacity of 1800.

The original **Gymnasium**, one of the first in South Mississippi, was constructed in 1929, and is now used for dances and other recreational activities in addition to the physical education program.

The **Colmer Vocational-Technical Building**, constructed in 1950, houses faculty offices, classrooms, laboratories, tool rooms, and work areas for carrying out vocational-technical training.

Gregory Chapel was completed in 1947 and provides a place for all types of religious functions. It houses offices of the B. S. U., Wesley Foundation, and the Newman Club.

Harrison Hall, a woman's dormitory, was constructed in 1938 and was renovated and refurnished in 1957.

Fahnestock Hall, a two-story brick dormitory, houses women on the upper floor and faculty on the lower floor (Constructed in 1929).

George Hall is a two story brick dormitory for male students constructed in 1947. This building houses approximately 100 students and includes two faculty apartments.

Jackson Hall is a two story brick dormitory for male students constructed in 1925 and completely renovated in 1956. The building houses approximately 55 students, and includes one faculty apartment.

Stone Hall is a two story brick dormitory for male students constructed in 1915 and completely renovated in 1956.

It houses approximately 55 students and includes one faculty apartment. The ground level accommodates the Periodical division of the Library, work rooms for the **Bulldog Barks** and the **Perkolator**, the Developmental Reading Center, and photography studio and darkroom.

Huff Hall is a two story brick dormitory for male students. Constructed in 1911, this is the oldest building on the campus. It was partially renovated in 1952, and additional improvements were effected in 1956. Approximately 55 students are housed, and one faculty apartment is included.

A. L. May Memorial Stadium, constructed in 1948, has a seating capacity of 5,000 and includes a press box, dressing rooms and storage area for equipment. The stadium is completely fenced and provides a football playing field and a quarter-mile track with 220 straightaway.

The **Swimming Pool**, constructed in 1953, is seventy-five feet in length and provides dressing facilities for women and men.

The **Apartment Dormitory** is a brick two story building, built in 1948, which furnishes living accommodations to faculty members. The Infirmary and nurses's apartment are located on the first floor of this building.

Faculty Residences include sixteen houses and three duplexes which are located on or adjacent to the college campus.

PART III**ACADEMIC PROGRAM****A. GENERAL ACADEMIC REQUIREMENTS
AND REGULATIONS**

Admission Requirements

Enrollment of Out-of-State Students

Admission Procedure

Special Students

Regular and Irregular Students; Academic Load

Policy of Probation and Suspension

Withdrawal Procedure

Guidance Services

Pre-Registration Counseling

Orientation Program

English Requirement

Faculty Advisors

Personal Counseling

Faculty Counseling

Class Attendance

Assembly Attendance

Grading System

Examinations

Quality Points

Honors

Honor Roll

Awards and Medals

Requirements for Graduation

Numbering of Courses

ADMISSION REQUIREMENTS

Requirements for admission to Perkinson College may be met by any one of the following methods:

1. Graduation from an accredited high school with a minimum of fifteen units.
2. Passing an entrance examination administered by Perkinson College.
3. Passing the General Education Development Test (GED).

ENROLLMENT OF OUT-OF-STATE STUDENTS

Due to the tremendous increase in the number of out-of-state students who apply for admission to Perkinson College, the Admissions Committee has found it necessary to adopt several changes in its Admission Policies in regard to out-of-state students, effective for the 1963-64 term. They are as follows:

1. Only a limited number of students can be accepted because of the increasing demand from students of Harrison, Stone, Jackson, and George counties. This number has been established at 60.
2. Perkinson College will not accept out-of-state transfer students from an out-of-state college unless he is a resident of Harrison, Stone, Jackson or George counties.
3. Out-of-state students who apply to Perkinson College must present a Composite score of not less than the 39th percentile on the American College Test based on College-Bound National percentile norms, as well as an acceptable high school transcript.
4. Students who are offered scholarships may have all of the above waived.
5. Because of the importance of Central and South America to the Gulf Coast Region, Perkinson College will continue to accept a limited number of out-of-country students from these areas who have sufficient knowledge of the English language to successfully engage in college studies. These students are not included in the number of out-of-state students that can be accepted.

ADMISSION PROCEDURE

1. Each prospective student must complete an application form, filling in the requested information in **ink** or by **typewriter**. The college calls attention, in particular, to four items relating to this application:

- a. A small photograph **must** be attached to the form.
- b. For students from Harrison, Stone, Jackson, and George Counties, recommendations for admission **must** be secured from five alumni.
- c. A complete physical examination is required, including a blood serology. The smallpox vaccination **must** be within the last five years, and the typhoid shots within the last two years, of the date of application.
- d. The application should be filed with the Director of Admissions, **and** the first semester matriculation fee of \$32.00 should be paid, as far in advance as possible, by both dormitory and day students. As Part IV, FINANCIAL INFORMATION, makes clear, advance payment of the matriculation fee reserves a room for boarding students and qualifies both dormitory and day students for summer pre-registration orientation.

Unless the application form is completed satisfactorily in all respects, it will be returned to the prospective student.

2. Each prospective student at Perkinson College must take the American College Test (ACT). This does not determine whether or not the student will be accepted, but is used primarily for counseling and guidance. This test is administered nationally three times a year, in November, February, and April; and applicants are encouraged to take the test at one of the nationally assigned dates and centers. Make-up test dates for prospective students who missed the national testing dates will be available during the summer at the Perkinson college campus.

3. For those prospective students who meet admission requirements by method (1) above, i.e., graduation from an accredited high school, the transcript of the high school credits must be sent, immediately after graduation, to the Perkinson College Director of Admissions. Transfer students from other colleges must request that their college transcripts be mailed directly to the Perkinson Director of Admissions.

4. Before they are officially accepted, all prospective students must have a personal interview with either the Dean of Perkinson College or the Director of Admissions.

5. All new applicants must participate in one day of pre-registration orientation on the Perkinson campus during the summer months. Prospective students will be notified what day they are scheduled to participate.

6. A special examination (in addition to the ACT) may be required of those prospective students from Harrison, Stone, George, and Jackson Counties who are graduating from high schools from which no students have previously enrolled at Perkinson.

7. Prospective students are not officially accepted until **all** these admission procedures are satisfactorily completed.

SPECIAL STUDENTS

A person over twenty-one years of age and of good moral character who can not otherwise meet Perkinson's admission requirements but who desires special training in certain courses may be enrolled as a SPECIAL STUDENT, if, in the opinion of the Dean of the College, he is able to keep up with the particular course work. Under no circumstances, however, are such SPECIAL STUDENTS given college credit for the courses they take.

REGULAR AND IRREGULAR STUDENTS: ACADEMIC LOAD

All regular students are required to take at least twelve academic hours. Occasionally, conditions may arise making it advisable to permit a student to take less than twelve hours. Such a student shall be classified as an IRREGULAR STUDENT and will be charged a tuition fee of \$5.00 per semester hour.

If a regular student should cut his academic load to less than twelve semester hours, he may attend thereafter **only as a day student**. If this should occur at any time during the first six weeks of the first semester, the student also would have to pay the irregular-student tuition fee of \$5.00 per semester hour in lieu of the matriculation fee.

A **normal** academic load consists of fifteen semester hours. Students may not take **more than eighteen hours** of academic work, without special permission from the Dean, except in agriculture and music.

POLICY OF PROBATION AND SUSPENSION

A full-time college student shall earn 12 academic semester hours and 24 quality points during a given semester or he shall be placed on probation for the next semester in which he enrolls. During the probationary semester the student must earn the required 12 academic semester hours and 24 quality points. If this requirement is not met, the student will be suspended for one semester unless he attends a summer session. In the case where it is possible for a student to immediately enroll for the summer session following his normal probationary period, summer credit earned may be applied to that credit earned during the probationary period in meeting the requirement of 12 academic semester hours and 24 quality points.

A student who has been suspended for one semester may apply for re-admission at the end of this period. If accepted by the admissions committee, he will be given one probationary semester. If the required 12 academic semester hours plus 24 quality points are not earned during this semester the student will be asked to withdraw and may not apply for re-admission for two regular semesters.

If a student is re-admitted for the third time and still fails to make the required 12 academic semester hours plus 24 quality points during this probationary semester he will be asked to withdraw and may not apply for re-admission at any future time.

WITHDRAWAL PROCEDURE

Once formally admitted, the student must complete the following withdrawal procedure to keep his record clear:

1. Obtain a withdrawal form from the Director of Student Personnel's office.
2. Secure the specified signatures and return the form to the Business Office.

Any student who fails to follow the proper withdrawal procedure will not get credit for courses being taken, and his permanent record will be marked, "Withdrawn without permission or explanation."

GUIDANCE SERVICES

The fundamental objective of the guidance and counseling services at Perkinson Junior College is to assist the student to achieve maximum results from his individual capabilities. This program includes the following:

1. **Pre-Registration Counseling:** For fall applicants, Perkinson requires an orientation interview with the Director of Admissions and Guidance. Prospective students in groups of approximately fifty make scheduled visits to the campus for at least one day during the summer. Those students who have not previously taken the American College Test will be given the test during this visit; and the interpreted results of the test will be shown. Applicants are individually interviewed by certified counselors and faculty advisors, who will help them prepare schedules for fall classes during the interview, the prospective students being assigned to classes in certain courses according to the scores made on the American College Test.

Applicants for the spring semester follow a similar, though less intensified, pre-registration counseling program.

2. **Orientation Program:** At the opening of each session, brief orientation periods are held with all new students, at which time they are given a **Student Handbook** outlining specific college regulations and policy. In subsequent orientation periods, students are instructed in community living by dormitory supervisors, the Director of Student Personnel, and the Dean of Women. Representatives of the administration explain the college's responsibilities to the students, and the students' to the college. Presidents of the various student organizations explain the function of their clubs and invite student participation.

3. English Requirement: During the pre-registration phase of the Orientation program, all freshmen will be required to take the ACT. Students will be assigned to English sections according to scores made on this test. However, at the end of the first semester in English 100, the student must demonstrate to the English faculty his level of efficiency, both in technical understanding and practical application. Failure in this attainment will necessitate the repetition of the course.

4. Faculty Advisors: Each student at Perkinston College is assigned to a member of the faculty who serves as the advisor for that student with respect to his academic program and progress.

5. Personal Counseling: Particular care and attention is given by the Director of Guidance and the Director of Student Personnel in counseling students on such matters as vocational choices, fields of study, or other college student problems.

6. Faculty Counseling: In addition to the above, each faculty member is available for consultation with any student at any mutually convenient time. Faculty members do not consider counseling to be an extra assignment, but one more opportunity to know and to help students.

CLASS ATTENDANCE

Students are expected to be prompt and regular in class attendance. Fundamentally, class attendance is the direct concern of the faculty member and his students. The faculty member has responsibility for judging the relationship between absences and the quality of performance of the student. Each student has the obligation to accept full responsibility for compliance with the spirit as well as the letter of attendance regulations.

Students are allowed one absence for each semester hour that a class meets. Each instructor reports daily all absences from class to the Director of Student Personnel where absences are recorded and excessive absences, as well as the penalties for such, are noted in the student's personnel records. If a student misses class more than the allowed absences, it becomes a matter for the instructor to decide whether or not to dismiss the student from the class.

If, in the judgment of the instructor, the student's excessive absences are unwarranted, the instructor will send a drop slip to the Director of Student Personnel, and that student may no longer attend the class.

In any case, to obtain credit for a course, a student must attend two-thirds of the meetings of the class during the semester.

ASSEMBLY ATTENDANCE

Students are required to attend weekly assembly programs. At these assemblies important announcements affecting the entire student body are made, and cultural programs are arranged to provide for the students' total educational enrichment.

A student is allowed to miss no more than two assemblies each semester. If a student misses in excess of the two allowed absences, disciplinary action will be taken.

GRADING SYSTEM

For the purpose of recording grades and reporting to parents, the college year is divided into two semesters, each being subdivided into three terms of six weeks each. At the end of each of the first two terms in each semester, a preliminary estimate of progress is reported. This is NOT an official grade. Its purpose, rather, is to give information on the **progress** of the student. A copy of this progress report will be mailed to the parent or guardian and a copy given to the student through his faculty advisor.

Official **grades** will be reported and recorded at the end of each semester. This grade is determined, in part, by an examination and also by the instructor's estimates on the following points: class attendance; quality of recitation; quality of completed assignments; promptness in completing work; persistence for mastery; self-reliance in work; application during study; attention to class activities; and general attitude in class.

All grades are reported according to the following letter scale:

A — Superior: Represents outstanding achievement in the regularly prescribed work.

B — Above Average: Represents above average achievement in the regularly prescribed work.

C — Average: Represents an average level of achievement.

D — Below Average: Lowest passing grade. Represents a below average achievement in the regularly prescribed work of the class.

F — Failure: Represents:

1. Failure to do the regularly prescribed work, or
2. Withdrawal from a course without permission, or
3. Withdrawal from a course - while failing - after the specified date listed in the College Calendar as the last allowable date for withdrawal.

I — Incomplete: A grade of "I" is given only when some phase of the prescribed work is not finished by the end of the semester. An "I" will become an "F" if the work is not completed during the student's next semester.

W — Withdrawn: The grade "W" is recorded if the student officially withdraws after the last day specified in the College Calendar and was not failing at the time of withdrawal.

EXAMINATIONS

Examinations given by Perkinston College are of four types: (1) regular, (2) deferred, (3) special (4) entrance.

Regular examinations are those given to classes in the normal course of a semester's work.

Deferred examinations are those given to students who for some good reason are unable to take the regular examinations. In all cases a student must secure written permission from the Registrar, and pay a fee of two dollars, before taking the deferred examination.

Special examinations are those given to students to remove conditional grades on subjects when the condition was caused by time lost due to illness or to some other emergency. Permission to take a special examination must be secured from a committee composed of the President, the Dean, and the instructor of the course. A fee of fifty cents is charged for each special examination.

Entrance examinations are of three types:

1. The American College Test is given to all students as a part of the **admission procedure**, as noted previously.
2. Also as noted previously under **admission requirements**, an entrance examination may be given to those entering students who do not

qualify under the GED or accredited high school graduation categories.

3. An entrance examination is required for any student entering from a high school in the four-county area from which no student has previously been enrolled at Perkinson College.

QUALITY POINTS

To qualify for graduation, a student must earn a minimum of two quality points for each academic hour. Quality points are computed on the following basis:

A.....	4 quality points
B.....	3 quality points
C.....	2 quality points
D.....	1 quality point
F.....	no quality points

Any course in which a student fails to make quality points may be repeated, and quality points earned on the basis of his second grade.

The grades which a student transfers to Perkinson College will be the basis for determining quality points according to the above scale.

HONORS

A student who has earned a quality point average of 3.3 shall be graduated "With Honors". A student who has earned a quality point average of 3.7 shall be graduated "With Special Honors".

HONOR ROLL

The Registrar will publish an Honor Roll at the end of each term. Students whose progress report or grade average in academic subjects is B or above, with no report or grade lower than C, will be listed on this Honor Roll, provided that student is taking at least fifteen academic hours.

AWARDS AND MEDALS

The **Huff** Medal will be awarded to the student giving the best oral reading, and the **Denson** Medal to the student giving the best original oration.

The **Smith** Medal is presented to the best all-around girl athlete, and the **Bennett** Medal to the best all-around boy athlete.

The **May** Medal is given to the piano student — not a music major — demonstrating the greatest progress and effort. The **Darby** Medal is given to the music-major piano student demonstrating the greatest progress and effort.

The **Forbis** Medal is awarded the male student who performs most satisfactorily the work assigned him for self-support; and the **Heidelberg** Medal is awarded the girl student who performs most satisfactorily the work assigned her for self-support.

The **Colmer** Medal is presented to the student majoring in agriculture who has the highest scholastic average. The **Woolworth** Medal in Agriculture is presented to the student who has attained most in a practical way from laboratory and field practice work.

The **Gregory** Medal is given to the student making most progress in Mathematics.

Special awards will be made to students who are most proficient in first year Spanish and first year French.

The **A. J. Price** Memorial Medal is presented to the student who has throughout the year practiced most effectively the Golden Rule.

The **C. S. Wentzell** Memorial Football Trophy is given to the sophomore who has contributed most to developing good sportsmanship, student attitude, and team effectiveness.

The Dr. **D. L. Hollis** Athletic Trophy is awarded the sophomore who has best promoted athletics by exemplary conduct.

The **Underwood Award of Merit** honors the outstanding Business Education major.

REQUIREMENTS FOR GRADUATION

Terminal vocational students at Perkinson are awarded **Vocational Certificates** for successful completion of prescribed studies in non-credit vocational courses. All other students are assumed to be working toward transfer or **graduation**.

To graduating students, Perkinson College grants the **Associates of Arts Degree**, the **Associate of Science Degree**, a **Diploma**, or a **Certificate of Graduation**. Students, therefore, may graduate under any one of the four following plans, if they meet the general requirements described below, as well as the specific program requirements:

Associate of Arts Degree: For specific requirements see "Suggested Programs of Study", Groups I and V, in Part III-B.

Associate of Science Degree: For specific requirements see "Suggested Programs of Study", Groups II, III, IV, VI, VIII, IX, and X, in Part III-B.

Diploma: Earn sixty semester hours, eighteen of which must be at the 200 level (that is, sophomore level), and which must also include.

English, nine hours (100-101 plus three hours elective)

Science, eight hours

Social Studies, six hours

Twelve hours in a major field

Orientation, one hour.

Certificate of Graduation: Earn sixty semester hours, which must include English 100 and 101.

General Requirements for Graduation: In addition to the specific program requirements outlined above, the student must fulfill the following general requirements for graduation — under any of the programs at Perkinson College:

Earn at least sixty semester hours with a quality point average of at least 2.0 **on all hours attempted**.

Earn four semester hours of physical education. Under certain conditions, academic hours may be substituted for physical education with approval of the Dean.

Earn one hour of orientation.

Be recommended by the faculty.

Be approved by the administration.

Be in attendance at Baccalaureate and Commencement Exercises, unless excused by the Administration.

NUMBERING OF COURSES

All courses offered at Perkinson College are identified by name and number. Courses numbered from 100 to 199 are considered to be freshman courses; those numbered from 200 to 299 are considered to be sophomore courses. Students should choose courses in accordance with their class standing. Students with less than twenty-four semester hours are considered to be freshmen; those with twenty-four or more academic hours and forty-eight quality points are considered to be sophomores.

Course numbers which are followed by "T" are technical courses and are offered for college credit only to those students enrolled in the area of technology.

B. SUGGESTED PROGRAMS OF STUDY

As the earlier section on Guidance and Counseling emphasized, the student's choice of courses and course sequences depends largely on the student's choice of a career. The Director of Admissions and Guidance, and the student's assigned faculty advisor, are available to help in counseling; but it is, of course, the student's personal and final responsibility to choose his own course of study.

The course groupings and sequences which follow are those which the faculty counselors normally recommend — the career objective of each group of courses being indicated ahead of the recommended sequence listings. These recommended course groupings and sequences will meet not only Perkinston's own requirements for graduation degrees or certificates but also most, if not all, normal transfer prerequisites.

Prospective students, therefore, should review this entire section on "Suggested Programs of Study" before selecting the group classification which seems best to fit their particular needs.

Obviously, some career choices will require more years of college-level work than Perkinston currently offers. Perkinston has designed its own basic courses and course sequences so that earned credits can be transferred readily to other accredited institutions. However, it should be clearly understood that individual senior colleges and professional schools may have individual freshman and sophomore requirements; and students contemplating transfer should consult the latest catalog of the institution to which they are planning to transfer — before they complete their Perkinston registration. If the senior institution requires an arrangement of courses different from any recommended in this section, the student may schedule an arrangement of courses to fit the particular case.

NOTE: Subsequent transfer from one group classification to another may make it difficult to meet graduation requirements in the normal period of time.

GROUP I GENERAL

This group is designed for students who are planning to complete requirements for a B.A. Degree; or to study law, journalism, or languages; or who are as yet undecided on their future career.

Freshman Year

1st Semester	Hrs.	2nd Semester	Hrs.
English 100	3	English 101	3
French 100 or Spanish 102	3	French 101 or Spanish 103	3
Mathematics 100 or 104	3	Mathematics 101	3
History 102	3	History 103	3
Government 100	3	Economics 101	3
Physical Education 100	1	Physical Education 101	1
Orientation 000	1		

Sophomore Year

1st Semester	Hrs.	2nd Semester	Hrs.
English 200	3	English 201	3
French 200 or Spanish 202	3	French 201 or Spanish 203	3
Chemistry 104 or Biology 100	4	Chemistry 105 or Biology 101	4
Speech 102	3	Psychology 200	3
Elective	3	Elective	3
Physical Education 200	1	Physical Education 201	1

GROUP II AGRICULTURE

Students wishing to major in general agriculture, agronomy, animal husbandry, dairying, horticulture, or poultry husbandry should pursue the basic agricultural curriculum outlined below.

Those wishing to specialize in agricultural education, agricultural administration, agricultural economics, forestry, agricultural engineering, or veterinary science should pursue the curriculum specific to their specialty.

BASIC AGRICULTURAL CURRICULUM

Freshman Year

1st Semester	Hrs.	2nd Semester	Hrs.
English 100	3	English 101	3
Chemistry 104	4	Chemistry 105	4
Mathematics 104	3	Mathematics 101	3
Horticulture 100	3	Economics 101	3
Field Crops 101	3	Animal Husbandry 103	3
Physical Education 100	1	Physical Education 101	1
Orientation 000	1		

Sophomore Year

1st Semester	Hrs.	2nd Semester	Hrs.
Biology 100	4	Biology 101	4
Accounting 102	3	Feeding 203	3
Farm Forestry 202	3	Soils 201	4
Dairying 200	3	History 201	3
Chemistry 201	4	Poultry 102	3
Physical Education 200	1	Physical Education 201	1

AGRICULTURAL EDUCATION**Freshman Year**

1st Semester	Hrs.	2nd Semester	Hrs.
English 100	3	English 101	3
Biology 100	4	Biology 101	4
Economics 101	3	Government 100	3
Horticulture 100	3	Poultry 102	3
Mathematics 104	3	Animal Husbandry 103	3
Physical Education 100	1	Physical Education 101	1
Orientation 000	1		

Sophomore Year

1st Semester	Hrs.	2nd Semester	Hrs.
History 102	3	History 103	3
Chemistry 104	4	Chemistry 105	4
Dairying 200	3	Field Crops 101	3
Farm Forestry 202	3	Soils 201	4
Speech 102	3	Feeding 203	3
Physical Education 200	1	Physical Education 201	1

**AGRICULTURAL ADMINISTRATION —
AGRICULTURAL ECONOMICS****Freshman Year**

1st Semester	Hrs.	2nd Semester	Hrs.
English 100	3	English 101	3
Biology 100	4	Biology 101	4
Economics 101	3	History 201	3
Horticulture 100	3	Poultry 102	3
Field Crops 101	3	Mathematics 104	3
Physical Education 100	1	Physical Education 101	1
Orientation 000	1		

Sophomore Year

1st Semester	Hrs.	2nd Semester	Hrs.
Accounting 102	3	Accounting 103	3
Chemistry 104	4	Chemistry 105	4
Dairying 200	3	Soils 201	4
Government 100	3	Farm Forestry 202	3
Mathematics 101	3	Animal Husbandry 103	3
Speech 102	3	Physical Education 201	1
Physical Education 200	1		

FORESTRY**Freshman Year**

1st Semester		Hrs.	2nd Semester		Hrs.
English 100	3	English 101	3
Mathematics 104	3	Mathematics 101	3
Chemistry 104	4	Chemistry 105	4
History 102	3	History 103	3
Government 100	3	Biology 101	4
Physical Education 100	1	Physical Education 101	1
Orientation 000	1			

Sophomore Year

1st Semester		Hrs.	2nd Semester		Hrs.
Economics 101	3	History 201	3
Horticulture 100	3	Soils 201	4
Biology 100	4	Speech 102	3
Mechanical Drawing 100	2	Electives	6
Physics 203	4	Physical Education 201	1
Physical Education 200	1			

NOTE: Summer camp is required of all forestry majors. It is held between the sophomore and junior years at Mississippi State University, and following the junior year at Louisiana State University and Alabama Polytechnic Institution (Auburn).

AGRICULTURAL ENGINEERING**Freshman Year**

1st Semester		Hrs.	2nd Semester		Hrs.
English 100	3	English 101	3
Chemistry 104	4	Chemistry 105	4
Mathematics 104	3	Mathematics 200	5
Mathematics 101	3	Mechanical Drawing 101	2
Mechanical Drawing 100	2	Sneech 102	3
Physical Education 100	1	Physical Education 101	1
Orientation 000	1			

Sophomore Year

1st Semester		Hrs.	2nd Semester		Hrs.
Mathematics 201	3	Mathematics 202	3
Physics 203	4	Physics 204	4
Government 100	3	History 201	3
Field Crops 101	3	Soils 201	4
Economics 101	3	Mathematics 203	3
Physical Education 200	1	Physical Education 201	1

VETERINARY SCIENCE**Freshman Year**

1st Semester	Hrs.	2nd Semester	Hrs.
English 100	3	English 101	3
Chemistry 104	4	Chemistry 105	4
Biology 100	4	Biology 101	4
Mathematics 104	3	Mathematics 101	3
Poultry 102	3	Government 100	3
Physical Education 100	1	Physical Education 101	1
Orientation 000	1		

Sophomore Year

1st Semester	Hrs.	2nd Semester	Hrs.
French 100	3	French 101	3
Chemistry 201	4	Chemistry 202	4
Physics 203	4	Physics 204	4
History 200	3	Animal Husbandry 103	3
Dairying 200	3	Feeding 203	3
Physical Education 200	1	Physical Education 201	1

GROUP III**COMMERCE AND INDUSTRY**

The Commerce and Industry curriculum group is designed to give nine-month, twelve-month, and two-year terminal programs in Secretarial Science; and one-year and two-year terminal programs in General Business and Accounting. It is also designed to give a two-year terminal program in Medical Secretarial Training.

For non-terminal students who plan to secure a degree in Business at a senior institution, the Perkinson College Bachelor of Science Degree preparatory curriculum will prepare business majors in such fields as: Accounting and Auditing; Business Administration; Economics; Marketing; Office Management; Personnel Management; Institutional and Industrial Management; Hospital Management; Hotel Management; Banking; Life Insurance; Property and Casualty Insurance; or Public Administration.

Finally, the Perkinson College Business Education curriculum offers the freshman and sophomore courses normally required by a senior institution for the Bachelor's Degree in Business Education.

SECRETARIAL SCIENCE**Nine Months Terminal**

1st Semester		2nd Semester	
	Hrs.		Hrs.
English 100	3	English 101	3
Shorthand 100	3	Shorthand 101	3
Typewriting 104 or 105	3	Typewriting 105 or 203	3
Mathematics 102	3	Mathematics 103	3
Office Machines 206	3	Secretarial Procedures 205	3
Physical Education 100	1	Business Writing 108	3
Orientation 000	1	Physical Education 101	1

SECRETARIAL SCIENCE**Twelve-Months Terminal****Freshman Year**

1st Semester		2nd Semester	
	Hrs.		Hrs.
English 100	3	English 101	3
Accounting 207	4	Business 107	3
Office Machines 206	3	Secretarial Procedures 205	3
Shorthand 100	3	Shorthand 101	3
Typewriting 104 or 105	3	Typewriting 105 or 203	3
Physical Education 100	1	Business Writing 108	3
Orientation 000	1	Physical Education 101	1

Summer Session

1st Term		2nd Term	
	Hrs.		Hrs.
Shorthand 200	3	Shorthand 201	3
Mathematics 102	3	Typewriting 203 or 204	3

SECRETARIAL SCIENCE**Two-Year Terminal****Freshman Year**

1st Semester		2nd Semester	
	Hrs.		Hrs.
English 100	3	English 101	3
Shorthand 100	3	Shorthand 101	3
Typewriting 104 or 105	3	Typewriting 105 or 203	3
Mathematics 102	3	Mathematics 103	3
Government 100	3	Office Machines 206	3
Physical Education 100	1	Business Writing 108	3
Orientation 000	1	Physical Education 101	1

Sophomore Year

1st Semester	Hrs.	2nd Semester	Hrs.
Accounting 207	4	Accounting 208	4
Typewriting 203 or 204	3	Typewriting 204 or	3
Shorthand 200	3	Economics 101	3
Business Law 106	3	Shorthand 201	3
Business 107	3	Speech 102	3
Physical Education 200	1	Secretarial Procedures 205	3
		Sociology 202	3
		Physical Education 201	1

GENERAL BUSINESS**One-Year Terminal**

1st Semester	Hrs.	2nd Semester	Hrs.
English 100	3	English 101	3
Accounting 207	4	Accounting 208	4
Typewriting 104 or 105	3	Typewriting 105 or 203	3
Mathematics 102	3	Mathematics 103	3
Business Law 106	3	Office Machines 206	3
Physical Education 100	1	Business Writing 108	3
Orientation 000	1	Physical Education 101	1

GENERAL BUSINESS AND ACCOUNTING**Two-Year Terminal****Freshman Year**

1st Semester	Hrs.	2nd Semester	Hrs.
English 100	3	English 101	3
Mathematics 102	3	Mathematics 103	3
Typewriting 104 or 105	3	Typewriting 105 or 203	3
Business Writing 108	3	Economics 101	3
Business 107	3	Speech 102	3
Government 100	3	Physical Education 101	1
Physical Education 100	1		
Orientation 000	1		

Sophomore Year

1st Semester	Hrs.	2nd Semester	Hrs.
Accounting 207	4	Accounting 208	4
Office Machines 206	3	Sociology 202	3
Business 106	3	History 202	3
History 201	3	Electives	6
Secretarial Procedures 205	3	Physical Education 201	1
Physical Education 200	1		

(14) (5)

MEDICAL SECRETARIAL TRAINING**Two-Year Terminal****Freshman Year****1st Semester**

	Hrs.
English 100	3
Shorthand 100	3
Anatomy and Physiology 102	3
Health 104	3
Typewriting 104 or 105	3
Physical Education 100	1
Orientation 000	1

2nd Semester

	Hrs.
English 101	3
Shorthand 101	3
Anatomy and Physiology 103	3
Health 105	3
Typewriting 105 or 203	3
Business Writing 108	3
Physical Education 101	1

Sophomore Year**1st Semester**

	Hrs.
Accounting 207	4
Typewriting 203 or 204	3
Psychology 200	3
Shorthand 200	3
Microbiology 106	3
Mathematics 102	3
Physical Education 200	1

2nd Semester

	Hrs.
Accounting 208	4
Typewriting 204 or	
Economics 101	3
Secretarial Procedures 205	3
Shorthand 202	3
Office Machines 206	3
Speech 102	3
Physical Education 201	1

B.S. DEGREE PREPARATORY**Freshman Year****1st Semester**

	Hrs.
English 100	3
Mathematics 100	3
History 102	3
Biology 100 or	3
Chemistry 104	4
Typewriting 104 or 105	3
Physical Education 100	1
Orientation 000	1

2nd Semester

	Hrs.
English 101	3
Economics 101	3
Mathematics 104	3
Biology 101 or	
Chemistry 105	4
History 103	3
Physical Education 101	1

Sophomore Year**1st Semester**

	Hrs.
English 200 or 202	3
Accounting 207	4
Business Writing 108	3
Business 107	3
Health 104	3
Physical Education 200	1

2nd Semester

	Hrs.
English 201 or 203	3
Accounting 208	4
Government 100	3
Sociology 202 or	
Psychology 200	3
Speech 102	3
Physical Education 201	1

BUSINESS EDUCATION**Freshman Year**

1st Semester	Hrs.	2nd Semester	Hrs.
English 100	3	English 101	3
Mathematics 100 or 102	3	Economics 101	3
History 102	3	Speech 102	3
Biology 100 or		Biology 101 or	
Chemistry 104	4	Chemistry 105	4
Typewriting 104 or 105	3	History 103	3
Physical Education 100	1	Physical Education 101	1
Orientation 000	1		

Sophomore Year

1st Semester	Hrs.	2nd Semester	Hrs.
English 200 or 202	3	English 201 or 203	3
Accounting 207	4	Accounting 208	4
Shorthand 100	3	Shorthand 101	3
Biology 100 or		Biology 101 or	
Chemistry 104	4	Chemistry 105	4
Education 100	3	Psychology 200	3
Physical Education 200	1	Physical Education 201	1

GROUP IV**HOME ECONOMICS**

This group is designed for either terminal students, or for those students planning to complete their bachelor's degree with a major in home economics (including teachers).

Freshman Year

1st Semester	Hrs.	2nd Semester	Hrs.
English 100	3	English 101	3
Mathematics 100 or 104	3	Economics 101	3
Biology 100	4	Biology 101	4
Design 202	3	Clothing 101	3
Foods 100	3	Speech 102	3
Physical Education 100	1	Physical Education 101	1
Orientation 000	1		

Sophomore Year

1st Semester	Hrs.	2nd Semester	Hrs.
English 203	3	English 201	3
Chemistry 104	4	Chemistry 105	4
History 102	3	History 103	3
Meal Planning 200	3	Clothing 201	3
Psychology 200	3	Sociology 202	3
Health 104	3	Physical Education 201	1
Physical Education 200	1		

GROUP V MUSIC

MUSIC EDUCATION (General) (Piano or Voice) Freshman Year

1st Semester

	Hrs.
English 100	3
Speech 102	3
Theory 100	4
Major Applied, Piano 105-B...2	
or Voice 109-B	2
Minor Applied, Voice 109-A...1	
or Piano 107-A	1
Choir 113	1
Music Literature 102	3
Physical Education 100	1
Orientation 000	1

2nd Semester

	Hrs.
English 101	3
Mathematics 100 or 102	3
Theory 101	4
Major Applied, Piano 106-B...2	
or Voice 110-B	2
Minor Applied, Voice 110-A...1	
or Piano 108-A	1
Choir 114	1
Music Literature 103	3
Physical Education 101	1

1st Semester

Sophomore Year

2nd Semester

	Hrs.
English 200	3
History 102	3
Theory 200	4
Music History 202	3
Major Applied, Piano 205-B...2	
or Voice 209-B	2
Minor Applied, Voice 209-A...1	
or Piano 205-A	1
Choir 213	1
Physical Education 200	1

	Hrs.
English 201	3
History 103	3
Theory 201	4
Music History 203	3
Major Applied, Piano 206-B...2	
or Voice 210-B	2
Minor Applied, Voice 210-A...1	
or Piano 206-A	1
Choir 214	1
Physical Education 201	1
Psychology 200	3

MUSIC EDUCATION (Instrumental)

1st Semester

Freshman Year

2nd Semester

	Hrs.
English 100	3
Speech 102	3
Theory 100	4
Music Literature 102	3
Major Applied 111-A	1
Piano 105-A or 107-A	1
Band 115	1
Physical Education 100	1
Orientation 000	1

	Hrs.
English 101	3
Mathematics 100 or 102	3
Theory 101	4
Music Literature 103	3
Major Applied 112-A	1
Piano 106-A or 108-A	1
Band 116	1
Physical Education 101	1

Sophomore Year

1st Semester

2nd Semester

	Hrs.
English 200	3
History 102	3
Theory 200	4
Music History 202	3
Major Applied 211-A	1
Piano 205-A	1
Band 215	1
Physical Education 200	1

	Hrs.
English 201	3
History 103	3
Theory 201	4
Music History 203	3
Major Applied 212-A	1
Piano 206-A	1
Band 216	1
Physical Education 201	1
Psychology 200	3

GROUP VI ENGINEERING

The courses required for freshman and sophomores are much the same for all branches of engineering.

Freshman Year

1st Semester	Hrs.	2nd Semester	Hrs.
English 100	3	English 101	3
Mathematics 200	5	Mathematics 201	3
Mechanical Drawing 100	2	History 102 or 103	3
Chemistry 104	4	Mechanical Drawing 101	2
Slide Rule 105	1	Chemistry 105	4
Physical Education 100	1	Physical Education 101	1
Orientation 000	1		

Sophomore Year

1st Semester	Hrs.	2nd Semester	Hrs.
English 202	3	History 200 or 201	3
Government 100	3	Mathematics 204	3
Physics 203	4	Physics 204	4
Mathematics 202	5	Mathematics 203	3
Elective	3	Elective	3
Physical Education 200	1	Physical Education 201	1

NOTE 1: The elective choice may be Economics 101, Sociology 202, Psychology 200, or English 203. Students majoring in petroleum engineering, however, should take Chemistry 201 as an elective.

NOTE 2: Students transferring to the School of Engineering at Mississippi State University must enter in the summer session following their sophomore year in order to take the professional engineering courses required for junior standing. If this is done, transferring students can graduate in two additional years.

GROUP VII SCIENCE

The basic science course outlined below is recommended for four-year science majors, and for pre-medical, pre-dental, and pre-pharmacy students.

The recommended courses for medical technologists, optometrists, and physical therapists are listed following the basic science course.

BASIC SCIENCE

Freshman Year

1st Semester	Hrs.	2nd Semester	Hrs.
English 100	3	English 101	3
French 100	3	French 101	3
Mathematics 104	3	Mathematics 101	3
Biology 100	4	Biology 101	4
Chemistry 104	4	Chemistry 105	4
Physical Education 100	1	Physical Education 101	1
Orientation 000	1		

Sophomore Year**1st Semester**

	Hrs.
English 200	3
French 200	3
History 102	3
Chemistry 201	4
Physics 203	4
Physical Education 200	1

2nd Semester

	Hrs.
English 201	3
French 201	3
History 103	3
Chemistry 202	4
Physics 204	4
Physical Education 201	1

MEDICAL TECHNOLOGY**Freshman Year****1st Semester**

	Hrs.
English 100	3
French 100	3
Mathematics 100	3
Chemistry 104	4
Government 100	3
Physical Education 100	1
Orientation 000	1

2nd Semester

	Hrs.
English 101	3
French 101	3
Mathematics 101	3
Chemistry 105	4
Economics 101	3
Physical Education 101	1

Sophomore Year**1st Semester**

	Hrs.
English 200	3
Chemistry 205	3
Biology 100	4
Physics 203	4
Physical Education 200	1

2nd Semester

	Hrs.
English 203	3
Biology 101	4
Psychology 200	3
Electives	6
Physical Education 201	1

PRE-PHARMACY**Freshman Year****1st Semester**

	Hrs.
Biology 100	4
Chemistry 104	4
English 100	3
Mathematics 104	3
Economics 101	3
Physical Education 100	1

2nd Semester

	Hrs.
Biology 101	4
Chemistry 105	4
English 101	3
Mathematics 101	3
Elective	3
Physical Education 101	1

Sophomore Year**1st Semester**

	Hrs.
Chemistry 201	4
Physics 203	4
Accounting 207	4
Elective	3
Physical Education 200	1

2nd Semester

	Hrs.
Chemistry 202	4
Physics 204	4
Microbiology 104	4
Elective	3
Physical Education 201	1

OPTOMETRY**Freshman Year**

1st Semester	Hrs.	2nd Semester	Hrs.
English 100	3	English 101	3
Mathematics 104	3	Mathematics 200	5
Chemistry 104	4	Chemistry 105	4
Mathematics 101	3	Elective	3
Government 100	3	Speech 102	3
Physical Education 100	1	Physical Education 101	1
Orientation 000	1		

Sophomore Year

1st Semester	Hrs.	2nd Semester	Hrs.
History 200	3	History 201	3
Physics 203	4	Physics 204	4
Elective	3	Psychology 200	3
Biology 100	4	Microbiology 106	4
English 200	3	English 203	3
Physical Education 200	1	Physical Education 201	1

PHYSICAL THERAPY**Freshman Year**

1st Semester	Hrs.	2nd Semester	Hrs.
English 100	3	English 101	3
Chemistry 104	4	Chemistry 105	4
Mathematics 104	3	Mathematics 101	3
Biology 100	4	Speech 102	3
Bible 107	2	Health 105	3
Physical Education 100	1	Physical Education 101	1
Orientation 000	1		

Sophomore Year

1st Semester	Hrs.	2nd Semester	Hrs.
History 200	3	History 201	3
Physics 203	4	Physics 204	4
Government 100	3	Physiology 221	3
Sociology 202	3	English 201	3
Elective	3	Psychology 200	3
Physical Education 200	1	Physical Education 201	1

PERKINSTON COLLEGE

GROUP VIII EDUCATION

Requirements for teaching are set by State Certification rulings, and are the same throughout Mississippi. Since December, 1956, all beginning teachers in accredited schools must be college graduates. The curriculum given below is the recommended program of general and basic professional education for the first two years of the four years required for an "A" certificate. It will be noted that courses recommended for the sophomore year differ as between elementary and secondary education majors.

Freshman Year

1st Semester		2nd Semester	
	Hrs.		Hrs.
English 100	3	English 101	3
History 102	3	History 103	3
Biology 100	4	Biology 101	4
Health 104	3	Mathematics 102 or 104	3
Education 100	3	Government 100	3
Physical Education 100	1	Physical Education 101	1
Orientation 000	1		

Sophomore Year (Elementary Education)

1st Semester		2nd Semester	
	Hrs.		Hrs.
English 200 or 202	3	English 201 or 203	3
Music Appreciation 104	3	Economics 101 or	3
Art 101	3	Sociology 202	3
Music for Children 207	3	Music for Children 208 ✓	3
Psychology 200 ✓	3	Education 102	3
Physical Education 200	1	Speech 102	3
		Physical Education 201	1

Sophomore Year (Secondary Education)

1st Semester		2nd Semester	
	Hrs.		Hrs.
English 200 or 202	3	English 201 or 203	3
Music Appreciation 104	3	Sociology 202 ✓	3
Speech 102 ✓	3	Health 105 ✓	3
Economics 101	3	Psychology 200 ✓	3
Science	3 or 4	Science	3 or 4
Physical Education 200	1	Major or Minor	3
*Physical Education 202	3	Physical Education 201	1

*for Physical Education majors only

INDUSTRIAL EDUCATION

This is a preparatory course for students interested in the Industrial field, Industrial Technology field, teaching of Industrial Arts, and for Trade and Industrial Education Coordinators.

Freshman Year**1st Semester**

	Hrs.
Mechanical Drawing 100	2
English 100	3
Government 100	3
Mathematics 102	3
Woodworking 102	3
Physical Education 100	1
Orientation 000	1

2nd Semester

	Hrs.
Mechanical Drawing 101	2
English 101	3
Psychology 200	3
Biology 101	4
Woodworking 103	3
Physical Education 101	1

Sophomore Year**1st Semester**

	Hrs.
Physics 203	4
English 200	3
History 102	3
Biology 100	4
Speech 102	3
Physical Education 200	1

2nd Semester

	Hrs.
Physics 204	4
History 103	3
English 201	3
General Metals 200	3
Health 104	3
Physical Education 201	1

GROUP IX

NURSING

The Associate of Science degree nursing program is designed to prepare men and women to function as capable practitioners of nursing. It is 24 months long, embracing four regular semesters plus two summer sessions. Graduates of the program are eligible to take the licensed Registered Nurse Examinations.

At present, the regular college courses are taken on the Perkinston campus and clinical practice is obtained at the Singing River Hospital in Pascagoula and Memorial Hospital in Gulfport. All clinical practice is under the direction and supervision of Perkinston College instructors of nursing. Clinical assignments are chosen to correlate nursing practice with lectures.

In the second summer of the program the clinical practice is obtained at the Mississippi State Hospital in Whitfield, emphasizing

study and care of the mentally ill. Nursing students at Whitfield are furnished room and board.

Students will be admitted to this program on a selective basis.

Freshman Year

First Summer Session—10 Weeks

	Hrs.
Mathematics 102	3
Biology 102 & 103	6
Nursing Science 123	1

First Semester

	Hrs.
English 100	3
Microbiology 106	4
Nursing Science 120	6
Nutrition 103	3
Physical Education 100	1
Orientation 000	1

Second Semester

	Hrs.
English 101	3
Psychology 200	3
Nursing Science 121	6
Sociology 202	3
Physical Education 101	1

Sophomore Year

Second Summer Session - 12 Wks

	Hrs.
Nursing Science 222	6

First Semester

	Hrs.
Nursing Science 220	10
Elective	3
Physical Education 200	1

Second Semester

	Hrs.
Nursing Science 221	10
Child Development 201	3
Nursing 223	1
Physical Education 201	1

GROUP X TECHNOLOGY (Two-Year Terminal)

At present, Perkinston College offers two-year terminal degree programs in two major fields of technology: Drafting and Design, and Electronics. Each curriculum grants an Associate of Science degree.

DRAFTING AND DESIGN

Freshman Year

1st Semester	Hrs.	2nd Semester	Hrs.
English 100	3	Technical Writing 106-T	3
Mathematics 112-T	3	Drafting 114-T	3
Drawing 107-T	5	Construction Materials 113-T	3
Government 100	3	Design 110-T	1
Design 109-T	1	Design 108-T	3
Slide Rule 105	1	Drawing 111-T	5
Physical Education 100	1	Physical Education 101	1
Orientation 000	1		

Sophomore Year

1st Semester	Hrs.	2nd Semester	Hrs.
Design 207-T	1	Metal Processing 211-T	3
Design 205-T	5	Design 206-T	5
Industrial Relations 208-T	3	Speech 102	3
Surveying 209-T	3	Surveying 210-T	3
Physics 115-T	3	Physics 116-T	3
Art 212-T	2	Physical Education 201	1
Physical Education 200	1		

ELECTRONICS**Freshman Year****1st Semester**

Hrs.

Drawing 117-T	2
Physics 115-T	3
Electronics 100-T (lecture)	3
Electronics 100-T (lab)	3
Electronics 102-T	2
Mathematics 105-T	3
Slide Rule 118-T	1
Physical Education 100	1
Orientation 000	1

2nd Semester

Hrs.

English 100	3
Physics 116-T	3
Electronics 101-T (lecture)	3
Electronics 101-T (lab)	3
Electronics 103-T	2
Electronics 104-T	2
Physical Education 101	1

Sophomore Year**1st Semester**

Hrs.

Electronics 200-T (lecture)	3
Electronics 200-T (lab)	3
Electronics 202-T	2
Electronics 203-T	3
Industrial Relations 208-T	3
Metal Processing 211-T	3
Physical Education 200	1

2nd Semester

Hrs.

Electronics 201-T (lecture)	3
Electronics 201-T (lab)	3
Electronics 204-T	2
Technical Writing 106-T	3
Speech 102	3
Economics 101 or	
Government 100	3
Physical Education 201	1

GROUP XI**TWO-YEAR TERMINAL (GENERAL)**

The sequence of courses in this group is not designed to provide a foundation for advanced study in a senior college, but rather to offer terminal training of a practical nature. The programs for men and for women recommended below can be modified to meet the particular needs of individual students. A Certificate of Graduation is awarded to those students in this terminal group who complete sixty semester hours of academic credit with a "C" average or above.

PROGRAM FOR MEN**Freshman Year****1st Semester**

Hrs.

English 100	3
Horticulture 100	3
Field Crops 101	3
Woodworking 102	3
Mathematics 102	3
Physical Education 100	1
Orientation 000	1

2nd Semester

Hrs.

English 101	3
Poultry 102	3
Economics 101	3
Woodworking 103	3
Speech 102	3
Physical Education 101	1

Sophomore Year

1st Semester	Hrs.	2nd Semester	Hrs.
Dairying 200	3	Farm Forestry 202	3
Metals 200	3	Animal Husbandry 103	3
Typewriting 104	3	Soils 201	4
Health 104	3	Health 105	3
Chemistry 104 or	4	Chemistry 105 or	4
Mechanical Drawing 100	2	Mechanical Drawing 101	2
Government 100	3	Physical Education 201	1
Physical Education 200	1		

PROGRAM FOR WOMEN**Freshman Year**

1st Semester	Hrs.	2nd Semester	Hrs.
English 100	3	English 101	3
Health 104	3	Health 105	3
Foods 100	3	Clothing 101	3
Typewriting 104	3	Government 100	3
Woodworking 102	3	Poultry 102	3
First Aid 103	1	Physical Education 101	1
Physical Education 100	1		
Orientation 000	1		

Sophomore Year

1st Semester	Hrs.	2nd Semester	Hrs.
English 202	3	English 203	3
Mathematics 102	3	Speech 102	3
Bible 107 or 109	2	Bible 108 or 110	2
Meal Planning 200	3	Clothing 201	3
Psychology 201	3	Home Economics 102	1
Music Appreciation 104	3	Art 101	3
Physical Education 200	1	Physical Education 201	1

C. ALPHABETICAL LISTING AND DESCRIPTION OF NUMBERED COURSES

NOTE: Numbers in parentheses following course title indicate course numbers in previous catalogs.

ART

Mr. Howie

- 101 — Introductory Art** Three Semester Hours
The fundamentals of drawing, perspective, light and shade, color theory and design are presented for students in the teaching programs.
- 102 — Beginning Drawing** Three Semester Hours
Basic problems in drawing, composition and figure study are met with the use of charcoal and pencil.
Two lecture and four laboratory periods per week.
- 103 — Intermediate Drawing** Three Semester Hours
This is a continuation of Beginning Drawing 102 with the additional use of such media as pen and ink, wash and conte crayon.
Two lecture and four laboratory periods per week.
- 104 — Drawing, Design and Color for Adults** Non-Credit
One two and one-half hour studio period weekly.

- 200-201 — Survey of Art History** Three Semester Hours Each
This survey traces the development of art from pre-historic to modern times. The first semester covers the development to the Renaissance and the second semester from the Renaissance to contemporary.

- 202 — Beginning Design** Three Semester Hours
Problems in design are met through the use of color; line, and light and shade. This course is designed primarily for home economics students.

AGRICULTURE

Mr. Shill

- 100 — General Horticulture** Three Semester Hours
Fundamentals of plant growth are applied to horticultural crops.
Two lecture and two laboratory periods per week.
- 101 — Farm Crops** Three Semester Hours
A study of the varieties, methods of planting, cultivating and harvesting common field and forage crops is made.
Two lecture and two laboratory periods per week.

102 — Poultry Husbandry Three Semester Hours

A study is made of the fundamental principles of poultry husbandry. Two lecture and two laboratory periods per week.

103 — Elements of Animal Husbandry Three Semester Hours

This survey in the field of animal husbandry deals with the relationship of livestock to farming; including a study of breeds and market classes as well as grades of farm animals.

Two lecture and two laboratory periods per week.

200 — Principles of Dairying Three Semester Hours

A general survey is made of breeds, selection, feeding and management of dairy cattle.

Two lecture and two laboratory periods per week.

201 — Soils Four Semester Hours

This is a study of the physical, chemical and biological nature of soils, the fundamentals of soil classification and the relationship between soils and growing plants.

Prerequisite: Chemistry 104

Three lecture and two laboratory periods per week.

202 — Farm Forestry Three Semester Hours

This course deals with practical development and management of farm forests.

Two lecture and three laboratory periods per week.

203 — Principles of Livestock Feeding Three Semester Hours

This course presents the principles of feeding farm animals as well as the composition and nutritive value of feeds and the compilation of rations.

Prerequisite: Elements of Animal Husbandry 103

Two lectures and two laboratory periods per week.

COMMERCE AND INDUSTRY

Miss Bounds

Mr. Cadle

Miss E. Graves

Mrs. McInnis

119 - Basic Computing Mach.

Mr. Malone
3 Sem. Hrs.

100-101 — Elementary Shorthand

Three Semester Hours Each

This course includes a study of Gregg Shorthand simplified, theory, phrasing, brief forms, transcripts, letter placement, and dictation of articles and various letters. Elementary Shorthand is divided into two groups: (A) for those students having had shorthand in high school for one year or more. (B) for those students having no previous shorthand, or less than one year of shorthand in high school.

104 — Elementary Typewriting Three Semester Hours

This course is designed for beginners in typewriting. Credit will not be given to a student whose high school transcript shows one unit in typewriting except through permission from the instructor.

105 — Intermediate Typewriting Three Semester Hours

This course includes a review of basic technique and continues with such elements as business letters with special parts, tabulation problems, manuscripts, and interoffice correspondence.

Prerequisite: Typewriting 104 or equivalent.

106 — Business Law Three Semester Hours

This course aims to give the student a practical understanding of the laws governing business transactions.

107 — Introduction to Business Three Semester Hours

This course is designed to provide the student with a general background of the nature of business and a preliminary idea of the various areas of business specialization.

108 — Business Writing Three Semester Hours

This course emphasizes the principles of effective report and letter writing, with practice in the preparation of business letters such as sales, credit, collection, promotion, and application.

Prerequisite: Typewriting.

200-201 — Advanced Shorthand

Three Semester Hours Each

This course offers training in the theory of advanced shorthand. Dictation is given from new material at varying rates of speed with emphasis placed upon phrasing, accurate and attractive transcripts, and punctuation of business letters.

202 — Medical Shorthand and Terminology

Three Semester Hours

This course offers specialized training in medical shorthand theory, dictation, and transcription. It also includes emphasis on medical terms, their pronunciation, spelling, and definitions.

203 — Advanced Typewriting Three Semester Hours

Special communication forms, all letter styles, statistical reports, business forms, and legal reports are included in this course. Speed, control, and production are re-emphasized.

Prerequisite: Typewriting 105.

204 — Problems in Typewriting Three Semester Hours

This course includes a review of techniques in skill building, with development of speed and accuracy in typing a variety of office forms, and emphasis on short-cuts in production typewriting.

Prerequisite: Typewriting 203.

205 — Secretarial Procedures Three Semester Hours

The purpose of this course is to give the student training in general office practice and procedure.

206 — Office Machines Three Semester Hours

This course is designed to give a reasonable proficiency in the use of such machines as calculators, adding machines, transcribing machines, duplicating machines and other types of office appliances.

Prerequisite: Typewriting.

207-208 — Principles of Accounting Four Semester Hours Each

This course is designed to give students an understanding of recording, classification and summarization of business transactions and events with insight into interpretation of the resulting effects upon the business. Previous knowledge of bookkeeping or accounting is not required.

Three lecture and two laboratory periods per week.

COMMUNICATIONS AND LITERATURE

Mrs. L. Hayden
Mr. Johansson
Mr. Lott

Miss N. Graves
Miss Cooley
Mrs. Finch

Mrs. Lott
Mr. Quina
Rev. Stewart

000 — Grammar-writing laboratory Non-Credit

The purpose of this course is to provide a concentrated review of grammar and to offer the student practice in composition writing; it is designed for students whose entrance scores indicate the need for special attention.

100-101 — English Composition Three Semester Hours Each

This course, a basic requirement in any college curriculum, draws upon the areas of reading, writing, speaking and listening, vocabulary building, elementary research and critical analysis. Since it is planned to meet the needs of the entering student, the depth and scope of the two-level program is designated by the **A** and **B** divisions — advancing the student adequately prepared in grammar and rhetoric, and assisting the student, noticeably deficient in these principles to meet the college demands.

102 — Public Speaking (12) Three Semester Hours

The basic principles of effective speech preparation and delivery are emphasized, and the student applies these techniques in practical speaking experiences. Speeches to inform and instruct, to convince and persuade, to stimulate and entertain, and speeches for special occasions are a part of the course. Parliamentary law is also included.

103 — Oral Interpretation Three Semester Hours

The mechanics of the interpretation of prose and poetry selections are applied in the presentation of selections for criticism given by the students. Sometimes called Oral Reading, this knowledge of interpretation will increase the reader's appreciation of all types of literature. This course is recommended for English majors, Education majors, Ministerial students and Pre-law students.

Pre-requisite: Public Speaking 102

104 — Developmental Reading — Improvement of Study One Semester Hour

This course is designed to develop reading skills in both speed and comprehension.

Three periods weekly for nine weeks.

105-106 — Journalism Two Semester Hours Each

This is a course in newspaper reporting, news-editing and lay-out, headline writing, proof reading, and general news regulations. These techniques are applied in the publication of the college newspaper **The Bulldog Barks**. Special attention is given to news stories, feature stories, interviews, and editorials.

107 — Play Production Two Semester Hours

This course covers the theories and techniques of acting including: character development, stage movement and stage business as well as script analysis.

108 — Play Production Two Semester Hours

This is a study of the problems in directing including: casting, rehearsing, scene designing, costuming, make-up, stage craft and organization.

109 — Debate Three Semester Hours

This course offers the basic principles in debate and argumentative speaking, with practical application of these principles in both areas.

110 — Parliamentary Procedure One Semester Hour

Study and application of parliamentary Law.

BIBLE COURSE DESCRIPTIONS**111 — A Survey of the Old Testament (109-110) Three Semester Hours**

This course is designed to give the student a basic foundation in the study of the Old Testament. Attention will be given to the historical setting of each book with emphasis on Hebrew custom and ritual. Some time will be spent in teaching the importance of the Old Testament in an understanding of the New Testament and fundamental principles of interpretation.

112 — A Survey of the New Testament (111-112) Three Semester Hours

This study is for the purpose of giving the student a working knowledge and appreciation of the New Testament. It is basically a lecture course using the Bible as the text. Some attention will be given to the writing, preservation, and translation of the Scripture; the historical and geographical setting of each book; and the development of the Christian movement in the First Century.

200-201 — Survey of English Literature

Three Semester Hours Each

This study involves a comprehensive treatment of leading authors, important works and chief literary types. The work is pursued chronologically, beginning the first semester with the Anglo-Saxon Period and extending into the Neo-Classical Age; continuing the second semester with the Romantic Period, and ending with the contemporary scene.

202 — An Introduction to World Literature (52)

Three Semester Hours

The course includes selections from fiction, non-fictional prose, poetry and drama with emphasis on British and American Literature.

203 — American Literature, A Survey (53)

Three Semester Hours

The course is a survey of American literature from colonial times to the present, designed to develop an appreciation of our American heritage.

204—The Life of Christ (204-205)

This course is a complete study of the life of Christ as recorded in the Four Gospels (Matthew, Mark, Luke, and John), which will include a background study of the geographical, political and social conditions of the world in Christ's day, His birth, His ministry, His teachings, His disciples, His death and resurrection, and influence upon the world.

205 — Life and Letters of Paul

Three Semester Hours

This course deals in detail with the life of the Apostle Paul as recorded in the book of Acts and with each of the Epistles which he wrote. Major attention will be given to Paul's three Missionary journeys.

EDUCATION AND PSYCHOLOGY

Mrs. Patton

Mr. Dayton

Mr. Probst

000 — Orientation

One Semester Hour

This program of orientation is required of freshmen and transfer students. (See Guidance Program)

100 — Introduction to Education

Three Semester Hours

The purpose of this course is to give the student a view of the entire field of education, which will serve as a background for more specialized courses.

102 — The Modern Elementary School

Three Semester Hours

Emphasis is placed in this course on the philosophy, objectives, organization and administration of the modern elementary school. Consideration is given to the history of elementary education, curriculum and teacher personality. Observation is provided in surrounding elementary schools.

200 — General Psychology

Three Semester Hours

This course is designed to give the student a broad understanding of man's development from birth. A study of the motivating factors of human behavior is emphasized.

201 — Child Growth and Development

Three Semester Hours

This is a study of the development of the child from the prenatal period through adolescence, including the physical, mental and social characteristics of the pre-school child, and the major problems in child development.

Prerequisite: Psychology 200

FOREIGN LANGUAGES

Miss Cooley

NOTE: Students must complete a minimum of one year of work in a foreign language if the credit is to be counted toward graduation. All students of French and Spanish are required to schedule two periods per week in the laboratory.

100-101 — First Year French

Three Semester Hours Each

This course is designed for beginners or for those whose preparation is one year or less in high school French. Drills in oral and written French through conversation and dictation are stressed.

200-201 — Second Year French

Three Semester Hours Each

This course includes a continuation of oral and written French composition, dictation, and conversation. Supplementary readings are required.

Pre-requisite: One year of college French or two years of high school French.

102-103 — First Year Spanish

Three Semester Hours Each

This course is designed for beginners or for those whose preparation is one year or less in high school Spanish. Drills in oral and written Spanish through conversation and dictation are stressed.

202-203 — Second Year Spanish

Three Semester Hours Each

This includes a continuation of oral and written Spanish composition, dictation, and conversation. Supplementary readings are required.

Pre-requisite: One year of college Spanish or two years of high school Spanish.

HEALTH AND PHYSICAL EDUCATION

Miss Ross

Mr. Sumrall

Mr. Farris

Mr. Sekul

Mr. Weathers

Mr. Wesson

NOTE: Every student is required to take physical education two hours each week, each semester. No student will be permitted to enter physical education classes until a medical report has been filed. All students must wear appropriate uniforms for physical education classes.

104 — Personal Health

Three Semester Hours

The functions of the human body are related to problems of health and disease.

105 — Community Health

Three Semester Hours

This is a study of health agencies, community control of environmental health hazards, and community control of disease.

103 — First Aid

One Semester Hour

This is the standard first aid course of the American Red Cross. Emphasis is placed on preparing students in the knowledge and skills needed in preventing accidents as well as rendering aid to the sick and injured.

102 — Water Safety And Life Saving

One Semester Hour

This is the American Red Cross Senior Life Saving Course with emphasis toward certifying life guards for swimming areas.

100-101 — Seasonal Sports and Activities

One Semester Hour Each

This course presents the fundamental skills and techniques in individual and team sports, along with folk, social and modern dance.

200-201 — Seasonal Sports and Activities

One Semester Hour Each

This is a continuation of 100-101 with more advanced skills and techniques being emphasized.

202 — Introduction to Physical Education

Three Semester Hours

A complete survey is made of the history, objectives, methods, psychology and philosophy of physical education.

HOME ECONOMICS

Miss McInnis

100 — Food Study

Three Semester Hours

This course involves the study of the body's need for food; the application of principles in planning, preparing and serving meals suitable for family needs.

One lecture and four laboratory periods per week.

101 — Selection of Clothing and Textiles

Three Semester Hours

This course offers opportunities for the selection and care of clothing; household fabrics for the family and basic principles of clothing construction. Textiles most commonly used, selection of materials, and ready-made clothing are studied.

One lecture and four laboratory periods per week.

102 — Home Economics for Moderns

Three Semester Hours

This course is designed to meet the needs of students (girls) in terminal education programs and non-homemaking majors. The content of the course deals with areas essential to successful living.

Two lecture periods per week and a four-week period of practical experiences in family group living.

103 — Nutrition

Three Semester Hours

This course presents foods and their values necessary for maintenance of health.

Two lectures and two hours laboratory

200 — Meal Planning and Table Service

Three Semester Hours

This is a continuation of Food Study 100 with emphasis on more advanced planning, preparation and service. Scientific principles of cookery are stressed.

One lecture and four laboratory periods per week.

201 — Textiles and Clothing

Three Semester Hours

A study is made of characteristics and identification of fibers; uses and costs of materials, fitting, construction, remodeling and mending garments.

One lecture and four laboratory periods per week.

NURSING

Mrs. McRae
Miss Dickson
Mrs. Kingman

Mrs. M. Hayden
Mrs. Klair

Mrs. Coats
Miss New
Miss Petty

120 — Nursing Science

Six Semester Hours

This is a study of and practice in the basic nursing skills.

Four lecture and six laboratory periods per week.

121 — Nursing Science

Six Semester Hours

This course is designed to correlate a study of and care for the basic medical and surgical needs of patients of all ages. Emphasis is placed on the development of skills in planning, administering and evaluating the nursing care of selected patients.

Prerequisite: Nursing Science 120, Microbiology 106, and Nursing Science 123.

Four lecture and six laboratory periods per week.

123 — Nursing Science (Dosage and Solutions)

One Semester Hour

This is a fundamental course designed to assist the student to acquire the knowledge necessary to compute dosage and prepare solution of drugs. It is assumed that the student is familiar with the fundamentals of mathematics involving fractions, decimals, ratios, proportions, and percentages. The student is responsible for learning how to convert the metric, apothecaries', and household systems of measurement

220 — Nursing Science

Ten Semester Hours

This is a continuation of the study of medical and surgical conditions with supervised practice of selected patients. Emphasis is placed on familiarizing the student with community health resources.

Prerequisite: Nursing Science 121 and Anatomy and Physiology 102.
Six lecture and twelve laboratory periods per week.

221 — Nursing Science

Ten Semester Hours

A course in maternal and child health which is designed to provide an educational experience in patient care during the normal and abnormal phases of pregnancy, labor, delivery and puerperium. Care of the normal and abnormal child from the newborn period through twelve years is included.

Prerequisite: Nursing Science 220.

Six lecture and twelve laboratory periods per week.

222 — Nursing Science

Six Semester Hours

This course is comprised of theory and clinical practice in the nursing care of the mentally ill. It is offered at the Mississippi State Hospital at Whitfield for a period of twelve weeks during the second summer of training.

223 — Nursing Science

One Semester Hour

A study is made of the trends in nursing from the static period to the dynamic present. Emphasis is placed on the nurses' relationship and responsibility to the nursing profession.

INDUSTRIAL EDUCATION

Mr. Breland

Mr. C. Davis

Mr. W. Moffett

Mr. Munroe

100 — Mechanical Drawing

Two Semester Hours

Preliminary training is given in freehand drawing, shades, and shadows; the use of instruments, geometric construction, isometric, oblique and cabinet projection; the development of surfaces and intersections for sheet metal work. Preliminary and special lettering exercises are given.

Six laboratory periods per week.

101 — Mechanical Drawing

Two Semester Hours

This course offers advanced study of working drawings, detail and assembly, requiring self reliance in the selection of views, sheet layout and manner of representation. Neatness, accuracy and economy of time are stressed.

Six laboratory periods per week.

102 — Fundamentals of Woodworking

Three Semester Hours

This course is designed to develop basic skills, knowledge and an appreciation in the use and care of hand tools, using materials and products of wood construction. The student is required to make job plans and to construct useful articles of different materials that will develop skills in the use of hand tools and job analysis.

One lecture and four laboratory periods per week.

103 — Advanced Woodworking Three Semester Hours

This is a continuation of Woodworking 102 with emphasis on the use of various power tools and the development of skill in planning, designing and finishing materials of wood.

One lecture and four laboratory periods per week.

200 — General Metals Three Semester Hours

The purpose of this course is to acquaint the student with processes in different types of metal work which will include such items as: welding and burning with acetylene, arc welding, drilling and tapping metals, work on metal lathes and forging and tempering of metals. Designed especially for Industrial Arts majors, this course can be taken as an elective by anyone desiring knowledge in this area.

One lecture and four laboratory periods per week.

MATHEMATICS

Mr. D'Aquila

Mr. Gammill

Mr. G. Moffett

Mrs. Moseley

Mr. Scarbrough

100 — College Algebra I Three Semester Hours

This is a first course in college algebra; it begins with the fundamental operations of Algebra and progresses systematically through quadratic equations.

101 — Plane Trigonometry Three Semester Hours

This is a modern course in college trigonometry with an introduction to analytic geometry.

Prerequisite: One year of high school algebra and one year of plane geometry.

102 — College Arithmetic Three Semester Hours

This course begins by defining mathematics and gives a systematic treatment of the fundamental concepts of mathematics. It is designed to help each individual handle his affairs more efficiently in the modern age.

103 — Mathematics of Finance Three Semester Hours

This course emphasizes the mathematical practices used in business transactions.

104 — College Algebra II Three Semester Hours

This course is a continuation of Mathematics 100; it begins with a brief review of Mathematics 100, then advances through more complex algebraic topics.

105 — Slide Rule One Semester Hour

This course places emphasis on accuracy and speed with fundamental scales and their relationships.

190 — Analytic Geometry Three Semester Hours

This course begins with elementary topics in Analytic Geometry and progresses through more complex topics; ending with an introduction to Solid Analytic Geometry.

191 — Differential Calculus Three Semester Hours

This course begins with the definition of a derivative of a function, stresses the process of differentiation of different types of functions along with applications to geometry, mechanics, and physics.

192 — Integral Calculus I Three Semester Hours

This course begins with the technique of integration; stresses the process of integration along with application to areas and volumes.

193 — Integral Calculus II Three Semester Hours

This course is a continuation of Mathematics 192 and it covers more advanced topics of integration; ending with an introduction to differential equations.

200 — Calculus with Analytic Geometry Five Semester Hours

This course emphasizes some of the basic concepts in analytic geometry, differentiation of algebraic and trigonometric functions and the properties of the definite integral.

201 — Calculus with Analytic Geometry Three Semester Hours

This course is a continuation of Mathematics 200 with emphasis on the technique of integration.

202 — Calculus with Analytic Geometry Five Semester Hours

This course is a continuation of Mathematics 201 with an introduction to differential equations.

203 — Descriptive Geometry Three Semester Hours

This course deals with the proper representation of all elements and forms of geometrical and graphical problems and gives the methods of determining the true shapes, true size, and the true relation of one element to another.

204 — Differential Equations Three Semester Hours

This course consists of the development and solution of differential equations, some partial differential equations and solution in series.

Prerequisite: Mathematics 202.

MUSIC

Miss Carey

Mr. Clement

Mr. Jones

Mrs. Warren

NOTE: In all applied music, one hour of practice will be required daily for each hour of credit given. The letters (a) or (b) following the number of the course will indicate the number of hours credit given in applied music as follows:

(a) — One Semester Hour

(b) — Two Semester Hours

100-101 — Music Theory Four Semester Hours Each

A study is made of elementary materials of music through part-writing, aural dictation, sight-singing and keyboard work.

Three lecture and two laboratory periods per week.

102-103 — Survey of Music Literature Three Semester Hours Each

This is a cultural course in the appreciation and understanding of music, including the study of compositional styles, the sociological influences upon composers and their works, and an understanding of a composer's musical message.

104 — Music Appreciation Three Semester Hours

This one semester course is required of all education majors. It is primarily a music listening course designed to illustrate the functional aspects of music in education and every-day living.

105-106 — Piano

Private lessons include the fundamentals of technique, reading and interpretation. Compositions are selected to suit the individual's background and ability.

107-108 — Class Piano

Class study in keyboard training is designed for students who have had no previous piano instruction. Fundamentals are taught through class participation and discussion, including the study of chordal accompaniments, the art of accompanying, transposition, and training in ensemble. This plan may, upon arrangement with the instructor, be combined with one private lesson per week.

109-110 — Voice

Private lessons include fundamentals of breath control, tone placement, voice building, flexibility and enunciation. Song literature of the classic and modern schools is given to build musicianship and a sense of style.

111-112 — Instrumental Music (Woodwinds and Brass)

Private lessons are in the fundamentals of technique, reading, and interpretation. Materials from standard repertoire are selected to suit individual needs.

113-114 — Choir

One Semester Hour Each

Mixed choir is open by audition to all students. It develops an understanding and appreciation of music through active participation, as well as enhancing the cultural environment of the college community through concerts and special performances.

115-116 — Band

One Semester Hour Each

The college band is open to any student displaying adequate technique. Its purpose is to provide color and atmosphere to athletic and community events as well as developing skills and an understanding of music literature.

200-201 — Music Theory

Four Semester Hours Each

This is a continuation of Music Theory 101 with emphasis on chromatic harmony and the analysis of standard works in varied styles. Three lecture and two laboratory periods per week.

202-203 — Music History

Three Semester Hours Each

The development of music is traced, beginning with primitive nations; early Christian liturgy; the development of polyphony; the rise of opera, oratorio and cantata; the Baroque, Classical, Romantic eras as well as trends in modern musical composition.

205-206 — Piano

This is a continuation of Piano 105-106 with selections from the masterpieces of classical, romantic and modern composers as well as continued work on technical and interpretative skills.

207-208 — Music for Children

Three Semester Hours Each

A study of the basic fundamentals of music is made, including sight-reading and terminology. The second semester is devoted to a study of methods, principles, and materials for the teaching of music in the elementary school.

209-210 — Voice

This is a continuation of Voice 109-110 with materials including arias from standard operas and oratorios.

211-212 — Instrumental Music (Woodwinds and Brass)

This is a continuation of Instrumental Music 111-112 using materials of a more advanced nature.

213-214 — Choir **One Semester Hour Each**

This is a continuation of Choir 113-114.

215-216 — Band **One Semester Hour Each**

This is a continuation of Band 115-116.

SCIENCE (Biological)

Mr. Maniscalco

Mr. Rainwater

Mr. Strickland

100 — BIOLOGY **Four Semester Hours**

Representative specimens will be used for each phylum to emphasize the progressive development from lower to higher life forms. Special attention will be paid to man and his problems arising from biological needs.

Two lecture and four laboratory periods per week.

101 — BIOLOGY **Four Semester Hours**

Class and laboratory study includes the structure, manner of life, and reproduction of the familiar higher plants. Field trips will be used to familiarize the student with trees in his own community.

Two lecture and four laboratory periods per week.

102 — Anatomy and Physiology **Three Semester Hours**

A study is made of the anatomy and physiology of the human body as an integrated whole with more detailed studies of the skeletal, muscular and nervous systems.

Two lecture and two laboratory periods per week.

103 — Anatomy and Physiology **Three Semester Hours**

This is a continuation of Anatomy and Physiology 102 in which the circulatory, respiratory, digestive, urinary, reproductive and endocrine systems are studied in general. Fluid and electrolyte balance, along with acid and base balance with reference to the functioning of the body is also considered.

Two lecture and two laboratory periods per week.

106 — Microbiology **Four Semester Hours**

A comprehensive study is made of bacteria and other micro-organisms including classification, morphology, cultural characteristics, and products of bacterial growth. Emphasis is placed on the study of disease-producing organisms and on general bacteriological technique.

Three lecture and two laboratory periods per week.

SCIENCE (Physical)

Mr. Faust

Mrs. Faust

Mr. G. Moffett

104 — Inorganic Chemistry Four Semester Hours

This course provides a study of general inorganic chemistry, the properties and numerical relationships of both common elements and compounds.

Two lecture and four laboratory periods per week.

105 — Inorganic Chemistry Four Semester Hours

This is a continuation of Chemistry 104 with emphasis on metallurgy tests, and carbon chemistry.

Two lecture and four laboratory periods per week.

205 — Qualitative Analysis Four Semester Hours

A study is made of the fundamental principles of qualitative analysis of anions and cations which stresses theory, equations and laboratory methods of separation and identification.

Two lecture and six laboratory periods per week.

201 — Organic Chemistry Four Semester Hours

This is an introductory study of organic chemistry and aliphatic compounds and derivatives.

Prerequisite: Chemistry 104 and 105.

Two lecture and four laboratory periods per week.

202 — Organic Chemistry Four Semester Hours

This course is a continuation of Chemistry 201. Further study is made of the aromatic compounds and their derivatives.

Two lecture and four laboratory periods per week.

203 — General Physics Four Semester Hours

This course presents the fundamental principles, definitions and terms of mechanics, heat and sound.

Prerequisite: College Algebra and Trigonometry or special consent of instructor.

Three lecture and two laboratory periods per week.

204 — General Physics Four Semester Hours

This course is a continuation of Physics 203 and deals with the fundamental principles of light, electricity and magnetism.

Three lecture and two laboratory periods per week.

SOCIAL STUDIES

Mr. Carter
Mr. Couch

Mr. Dayton
Mr. James

Mr. Rivers
Mr. Stamps

- 100 — American Government** Three Semester Hours
This course is designed to familiarize the student with the development and organization of federal, state and local governments.

- 101 — Principles of Economics** Three Semester Hours
This is a survey course in the principles and problems of economics; production costs; determination of prices; and national income composition and distribution.

- 102-103 — Survey of World History** Three Semester Hours Each
This is a general survey course in the development of civilization. The first semester begins with the dawn of history and extends into the sixteenth century. The second semester brings the survey up to the present.

- 202 — Introduction to Sociology** Three Semester Hours
The purpose of this course is to give the students an introduction to sociology and its development. Stress is placed on how man builds his culture and how customs and behavior patterns are developed, along with the functions and importance of social institutions.

- 200-201 — American History** Three Semester Hours Each
This is a study of the political and social growth of the United States from 1492 to the present. During the first semester particular stress is placed on the development of the Constitution with the Hamiltonian, Jeffersonian and Jacksonian interpretations. The second semester begins with the Reconstruction era and traces the nation's development to the present.

- 104 — Principles of Geography** Three Semester Hours
The environment of world history is stressed in this introduction to global geography, which seeks to relate cultural history to physical features.

TECHNOLOGY

Mr. Beck
Mr. Breland
Mr. Cowser

Mr. C. Davis
Mr. Dedeaux
Mr. James
Mr. Stewart

Mr. G. Moffett
Mr. W. Moffett
Mr. Munroe

100-T — Introductory Electronics

Six Hours Credit

This course presents work on the laws of magnetism and the fundamentals of direct current. Network problems of a linear nature are solved. Fundamentals of alternating current progressing through series and parallel resonance, along with the fundamentals of R-C and R-L time constants are studied.

Three lecture and six laboratory periods per week.

101-T — Electronics

Six Hours Credit

This course presents the fundamentals of non-linear conductors, with hard tubes and transistors handled concurrently. Also covered in some detail are the characteristic curves and static load line concepts as applied to triode operation. Additional work includes VR and improved-VR circuits, amplifiers, free-run oscillators, power supplies, limiters and clamping circuitry, thyatrons and both hard-tube sweep generators.

Three lecture and six laboratory periods per week.

102-T — Electrical Problems

Two Hours Credit

This course consists of problems using the fundamentals of electricity. The work will include solution of networks requiring the student to use Ohm's, Kirchoff's and Joule's Laws, voltage divider and basic electro-magnetic and electrostatic concepts.

103-T — Electrical Problems**Two Hours Credit**

This course consists of problems using electronic fundamentals. Work will include basic diode and triode problems, including load lines, amplification and gain, voltage regulators and time constants.

104-T—Electronic Devices**Three Hours Credit**

This course presents the theory and use of motors, generators, both A-C and D-C; vacuum, gas and special type tubes; semi-conductors; relays; switches; transformers and oxide rectifiers as applied to accounting, punch, sorting and data processing machines.

Two lecture and two laboratory periods per week.

105-T — Technical Mathematics**Three Hours Credit**

This course presents a review of algebra, with special work on complex notation (j operator) and vector algebra, fundamentals of trigonometry and an introduction to binary numbers.

106-T — Technical Writing and Reports**Three Hours Credit**

This is a learning-by-doing course in communication skills which emphasizes improvement in technical reading, note-taking and information gathering, technical thinking, as well as technical writing.

107-T — Technical Drawing**Three Hours Credit**

This course is a study in the use of instruments; geometric construction; principle views in projection; auxiliary and section views, dimensioning; detail working drawings; and isometric projection.

Two lecture and six laboratory periods per week.

108-T — Structure Design

Three Hours Credit

A study is made of statically determinate structures including beams, columns, trusses, struts and tension members. Shear and bending moments, torsion, slope and deflection problems are worked in wood, reinforced concrete, steel and other structural materials.

109-T - 110-T — Fundamentals of Design

One Hour Credit Each

Lettering, sketching, perspective and shadows, and elementary design problems are studied in this course.

Two laboratory periods per week.

111-T — Technical Drawing

Five Hours Credit

This course is a reading analysis of shop drawings, machine parts, detail and assembly drawings, as well as problems in electrical, topographical and piping layouts.

Two laboratory periods per week.

112-T — Fundamentals of Mathematics

Three Hours Credit

Principles and techniques of arithmetic, elementary algebra and numerical trigonometry are adapted to the drafting curriculum.

113-T — Construction Materials

Three Hours Credit

This course is designed to acquaint the student with the most common materials used in construction as to characteristics, uses and cost. It also covers different types of fasteners and hardware used in assembling these materials and methods of finishing.

114-T — Drafting Problems

Three Hours Credit

This course presents applications of the right triangle to structures and the solution of drafting problems. The various gear teeth are analyzed mathematically and the reasons for various shapes are investigated. The mathematics of plane surveying is introduced by working with various shaped land areas to determine azimuth and bearing of the bounds, as well as computation of area.

Prerequisite: Mathematics 112-T

115-T — Physics

Three Hours Credit

This course presents the fundamental principles, definitions and terms of mechanics.

Two lecture and two laboratory periods per week.

116-T — Physics

Three Hours Credit

This course deals with the fundamental principles of magnetism and electricity.

Two lecture and two laboratory periods per week.

117-T — Electrical Drawing Two Hours Credit

This course provides a working knowledge of electrical symbols and connectors, circuit schematics, cabling, wire layouts and checking, as well as block diagrams and module representation as used in the several current techniques.

Four laboratory periods per week.

118-T — Slide Rule One Hour Credit

A study is made of slide rule functions which include multiplication, division and proportion principles using basic scales, operation and use of trigonometric and log scales.

200-T — Advanced Electronics Six Hours Credit

This course presents work on the elements of receivers and transmitters. Also covered are rectifiers, voltage doublers and various types of relaxation oscillators. A final treatment works up the Squarer-Peaker circuit variations and the step-charging diode count-down circuit.

Three lecture and six laboratory periods per week.

201-T — Advanced Electronics Six Hours Credit

This course presents work on transmission lines, quarter-wave stubs, standing-wave profiles from any method of termination, along with matching elements, waveguides, modes of operation for both rectangular and circular guides and resonant cavities. Antenna radiation concepts, antenna arrays and radiation directivity are treated. Additional work follows on klystrons, magnetrons, modulation requirements and driving sources.

Three lecture and six laboratory periods per week.

202-T — Electrical Problems Two Hours Credit

This course presents problems of modulation and demodulation, including single and multistage circuits.

203-T — Electrical Devices Three Hours Credit

This is a study of the design, use and application of vacuum tube volt meters, signal generators, frequency meters, oscilloscopes, synchro-servo mechanisms, amplidyne, magnetic amplifiers, radiators, reflectors and control devices.

Two lecture and two laboratory periods per week.

204-T — Electrical Problems Two Hours Credit

This course presents problems in transmission line, co-axial cables, wave guides, matching and phasing devices, pulse delay and charging lines, microwave oscillators, modulators and antenna systems.

205-T - 206-T — Architectural Design**Five Hours Credit Each**

This course includes principles and practices of modern design, requiring working drawings and solutions, typical construction details and specifications for residential and industrial construction.

Two lecture and six laboratory periods per week.

207-T — Machine Design**One Hour Credit**

This is a course designed to set forth a number of designed aspects with attention focused on such factors as: function, economy, operation, maintenance and appearance of the part.

Two laboratory periods per week.

208-T — Industrial Relations**Three Hours Credit**

This course deals with problems involving human relations and the development of a foundation for personal relations for dealing with superiors, associates and subordinates. Practical discussions are held on applying for a job, including the application, interview, job evaluation and the first week on the job.

209-T - 210-T — Plane Surveying**Three Hours Credit Each**

A study is made of the theory and practice of plane surveying, including the use and care of instruments, land descriptions and calculations and the use of aerial photographs.

Two lecture and two laboratory periods per week.

211-T — Metal Processing**Three Hours Credit**

A study is made of the various methods by which metals can be shaped, formed and changed. Emphasis is placed on the study of design and strength of metals. Practice will include work on metal lathes, drill presses, strength testing equipment, forging and welding.

One lecture and four laboratory periods per week.

212-T — Art**Two Hours Credit**

This is a study of the medium and of picture structure; exercises in building and landscape rendering; and the use of pencil, pen, charcoal and color.

Four laboratory periods per week.

VOCATIONAL**101 — Electric Circuits****Non-Credit**

A two-month study is made of the fundamental concepts of circuiting, ranging in scope from rectifier applications through microwave theories of Klystron and Magnetron tubes. This course pre-supposes a basic knowledge of D.C. and A.C. theory.

111 — Electric Welding

Non-Credit

This two-month course covers the techniques of flat, vertical and overhead welding with various types of electric welding equipment.

121 — Practical Nursing Education

Non-Credit

This is a twelve-month continuous course designed to give the student a basic knowledge of the care of the sick and necessary related information as to body structure and function.

A pre-clinical period of four months (480 hours) is spent in classroom instruction and ward practice.

A clinical period of eight months is spent in one of the affiliating hospitals.

After satisfactorily completing the twelve-month course, the student is eligible to take the State Board examination to become a licensed Practical Nurse.

Prerequisite: A tenth grade education or equivalent.

PART IV

FINANCIAL INFORMATION

A. EXPENSES

Categories of Students (By Costs)

In terms of costs, there are five major classes of Perkinston students:

- (1) Residents of the four tax-supporting counties of Harrison, Stone, Jackson, and George.
- (2) Residents of other Mississippi counties.
- (3) Out-of-state students.
- (4) Irregular students.
- (5) Evening-college students.

There is **no** tuition cost at Perkinston for classes (1) and (2). The only tuition charges are for: (3) out-of-state students, who are currently charged \$150.00 per semester, in addition to the other fees listed and described below; (4) irregular students, who are charged a tuition fee of \$5.00 per semester hour, as detailed below; and (5) evening-college students, whose tuition fees depend on the particular course and the enrollment in that course.

For **bona fide** Mississippi residents from other counties than Harrison, Stone, Jackson, and George (category 2), there is no tuition fee. However, a **maintenance** fee of \$10.00 per month (4 weeks) is charged, in addition to the other fees listed and described below.

There is neither tuition nor maintenance charged to regular students from Harrison, Stone, Jackson, and George counties. Costs to students in this first category can be summarized as follows:

A. For non-dormitory, commuting "day" students who are currently being offered free transportation on college buses operating throughout the four-county area:

1. A matriculation fee of \$32.00 per semester, which covers the services detailed under its description below.
2. Relatively minor special and miscellaneous fees listed and described below.

B. For dormitory students:

1. The same \$32.00 per semester matriculation fee.
2. The same special and miscellaneous fees described below.
3. Room rent of \$45.00 per semester.
4. Board of \$34.00 per month (84 meals).

List of Major Fees and Charges

MATRICULATION — A fee of \$32.00 per semester is charged all full-time students. Applicants for dormitory rooms should pay this fee as early in advance as possible, in order to select and reserve rooms. Both dormitory and day students alike should pay this fee for the first semester of the 1963-64 session no later than Saturday, August 10, 1963, in order to participate in the pre-school orientation program. Payment of the fee qualifies the student applicant to be scheduled for testing and/or pre-registration, depending on whether or not he has taken the American College Test.

Payment of the **Matriculation** fee for a given semester entitles students to:

- (1) Attend, at no additional cost, athletic contests scheduled on the campus.
- (2) Receive the student newspaper, **Bulldog Barks**.
- (3) Attend scheduled Lyceum programs.
- (4) Use the Infirmary services for first aid and minor ills.
- (5) Use science laboratories and equipment in scheduled courses.
- (6) Receive private lessons in music, and use instruments and practice facilities involved (Music majors receive preference).
- (7) Receive the college yearbook, **Perkolator**, when matriculation fee is paid for both semesters of the regular school year.
- (8) Take part in other student activities supported in whole or in part from the fee.

ROOM RENT — Dormitory room rent is \$45.00 per semester, payable in advance at the beginning of each semester; it is not refundable after the semester begins.

BOARD — Meals in the cafeteria are currently \$34.00 per month (84 meals: three meals a day, seven days a week, for four weeks), payable in advance each month (see College Calendar for due dates).

MAINTENANCE — A maintenance fee of \$10.00 per month (4 weeks) is charged all regular students from Mississippi who do not reside in the four supporting counties of Harrison, Stone, Jackson, and George. This fee pays for lights, heat, water and maintenance of that part of the plant used for non-boarding purposes. Students whose parents are not actual residents of the supporting counties must pay this fee monthly. This regulation is authorized by the Board of Trustees, is in accordance with state laws, and is strictly enforced.

NON-RESIDENT TUITION — A non-resident tuition charge of \$150.00 per semester is assessed all regular students whose parents or guardians are not legal residents of Mississippi. This tuition helps pay instructional, administrative, and other operational expenses. Non-resident tuition is due and payable at the beginning of each semester.

IRREGULAR STUDENT TUITION — A fee of \$5.00 per semester is charged those students who take less than 12 semester hours credit (12 hours is the minimum load for a full-time student). If during the first six weeks term of the first semester a full-time student cuts his semester load down to less than twelve academic hours, he will be required to pay the irregular tuition fee of \$5.00 per semester hour in lieu of the regular matriculation fee. If such a student has been residing in a dormitory, he will also have to withdraw from the dormitory and continue as a day student.

EVENING-COLLEGE TUITION — The cost of courses offered in the evening-college division depends on the particular course and the number of students enrolled in that course.

Miscellaneous Fees

MEDICAL INSURANCE — The college recommends that each student be covered by a hospitalization and medical insurance policy. The student may be a member of his family's plan, or he may elect to enroll in a Student Health Program group plan made available through the college. Parents are reminded that most family plans terminate coverage of children at 18 years. Parents are also reminded that the college requires that parents or guardians of students

sign a waiver which releases any official representative of the college from debts incurred when students require, in emergencies, the services of a doctor or a hospital.

NOTE: The college's group insurance plan is selected from those submitted by insurance companies each year. The college tries to pick the plan which will give comprehensive coverage at minimum cost.

ELECTRONICS — Students in the electronics program are assessed a fee of \$10.00 per semester to purchase receiver kits. When the receiver is completed, it becomes the property of the student.

PHYSICAL EDUCATION GYM SUITS — All physical education students are required to wear gym suits in class. Appropriate suits are available at minimum cost through the college.

TRANSCRIPTS OF CREDIT — One official transcript of credit earned at Perkinson Junior College will be furnished to the student without charge. A fee of \$1.00 will be charged for each additional transcript.

GRADUATION FEES — Graduates will pay for caps and gowns and for diplomas. These fees are assessed during the semester in which the student is to graduate, and are dependent upon current price listings.

TESTING FEE — All students entering Perkinson Junior College are required to take the American College Test. Students have the opportunity to take this test at any of three dates during their senior year in high school. If the test is not taken then, the student applicant must come to the Perkinson campus on a scheduled testing date sometime during the summer prior to admission. The fee for taking the test during the summer is \$4.00.

LATE TESTING FEE — If a student can not take the American College Test until registration begins on Tuesday, September 3, 1963, he will be charged a late testing fee of \$2.00, plus the normal fee of \$4.00.

LATE REGISTRATION FEE — Students who do not register for classes until after Wednesday, September 4, 1963 will be charged a late registration fee of \$4.00.

CHANGE OF PROGRAM FEE — After a student has been enrolled for one week, a fee of \$1.00 is charged for the addition of a new course, the exchange of one course for another, or for transferring from one section to another, unless the student is being requested to make such a change by the administration. The deadline for making any change is indicated in the College Calendar.

DORMITORY ROOM KEY DEPOSIT — Dormitory students are required to pay a fifty cent deposit for room keys. The deposit will be refunded when the student withdraws from the dormitory and returns the key.

DEFERRED EXAMINATION FEE — There is a charge of \$2.00 for deferred examination (see Examinations in Part III — ACADEMIC PROGRAM).

SPECIAL EXAMINATION FEE — There is a charge of fifty cents for a special examination (see Examinations in Part III — ACADEMIC PROGRAM).

Refund Policy

The refund policy of Perkinson College is as follows:

MATRICULATION — No refund after August 17, 1963 for the first semester of 1963-64. For the second semester, matriculation is not refundable after classes begin.

ROOM RENT — No refund after the semester begins.

BOARD — The unused balance will be refunded.

OUT-OF-STATE TUITION — will be refunded on a pro rata basis.

NOTE: Tuition paid by special students attending under Armed Services assistance programs is not refundable, and a student is responsible for his full tuition charge up to the date of his withdrawal from any course or from the college.

111.50
32.00
79.50

SUMMARY OF EXPENSES

When it is convenient, students are encouraged to pay all expenses for a semester when that particular semester begins.

I. DAY STUDENTS

- (a) All commuting students whose parents reside in **Harrison, Stone, Jackson, or George** counties will pay the following on enrolling for a semester:

Matriculation fee	\$32.00
Total due at registration	\$32.00

- (b) Commuting students from other, non-supporting Mississippi counties than those listed above will pay the same amount listed for (a) plus a **monthly** maintenance fee of 10.00
- Total due at registration \$42.00
- For each month after the first, student will pay \$10.00.

II. DORMITORY STUDENTS

- (a) Dormitory students coming from **Harrison, Stone, Jackson, or George** Counties will pay the following upon enrolling:

Matriculation fee	\$ 32.00
Room rent for semester	45.00
First month's meals	34.00
	<hr/>
	\$111.00
Room key deposit50
Total due at registration	<hr/>
	\$111.50

AFTER THE FIRST MONTH, expenses for meals will be \$34.00 per month payable each month, in advance.

- (b) Dormitory students coming from other, non-supporting, Mississippi counties, than those listed above will pay the same amount listed for (a), plus a **monthly** maintenance fee of 10.00
 Total due at registration \$121.50

AFTER THE FIRST MONTH, these students pay \$34.00 for meals and \$10.00 maintenance fee for a total each month of \$44.00.

- (c) OUT-OF-STATE STUDENTS pay the same as listed in (b) which refers to Mississippi students from non-supporting counties, BUT ALSO PAY an OUT-OF-STATE FEE OF \$150.00 **each semester**, payable in advance 150.00
 Total due at registration—Out-of-State \$271.50

THE BOARD OF TRUSTEES OF THE MISSISSIPPI GULF COAST JUNIOR COLLEGE DISTRICT RESERVES THE RIGHT TO CHANGE ANY OR ALL FEES OR ANY COSTS PERTAINING TO EDUCATION, BOARD, HOUSING OR TRANSPORTATION WITHOUT NOTICE OR PUBLICATION IN ADVANCE OF SUCH CHANGES.

STUDENT AID: SCHOLARSHIPS AND STUDENT LABOR

The college uses student labor for a number of functions such as bus driving, the library, clerical and secretarial help, cafeteria work, etc. While it attempts to provide work for every student who needs help in meeting college expenses, the college also insists that:

- (1) no student is permitted to have and hold a job who does not give it proper attention.
- (2) students holding jobs must do satisfactory school work.
- (3) students from Harrison, Stone, Jackson, and George counties are given preference.

(4) students are expected to keep the jobs awarded them throughout the session and must not ask to be relieved from them without good cause.

The student work scholarships range from \$5 to \$25 a month.

Band and choir members may also be awarded scholarships in some instances; and a number of athletic scholarships are available to those who excel in sports.

Many organizations outside the college itself also sponsor scholarships: examples are the Pascagoula Kiwanis Club; the Wiggins Kiwanis Club; the Biloxi Pilot Club; the Wiggins, Biloxi, and Gulfport P.T.A.'s; the local chapter of Phi Theta Kappa; and the local chapter of Circle K; the Dantzler Lumber Company; the Crown-Zellerbach Corporation; the Gulfport Civitan Club; and the Perkinson College Alumni Association.

The state of Mississippi also offers certain scholarships for students training to become registered nurses.

The Director of Student Personnel can supply the latest information on scholarships available for the 1963-64 session.

PART V

STUDENT LIFE AND ACTIVITIES

The Educational Purpose of Student Activities

Perkinston College offers to its student body — both dormitory and "day" students — a wide variety of extra curricular activities; but these activities are designed to supplement and enrich, rather than compete against, academic pursuits. All clubs and organizations are sponsored by members of the faculty or administrative staff — with the sponsors appointed by the president of the college. Students are encouraged to participate where they have an interest, but are cautioned not to allow their academic progress to suffer because of over-emphasis on purely extra-curricular activities.

The campus clubs and organizations which are currently active may be identified under four categories.

(1) **All** students are represented in the Student Council and the Freshman and Sophomore class organizations, described in more detail in the following section.

(2) Apart from the Student Council and the class organizations, student activities are grouped by particular fields of interest.

(3) Campus religious organizations are prominent enough to justify description in a special section, following the other club listings.

(4) The college band, choir, and other musical activities are also prominent enough to justify special description — particularly in their relation to the off-campus community.

Student disciplinary regulations are summarized in the final section to Part V; and this section should be read together with the **Student Handbook** for the latest revisions.

The Student Council and Class Organizations

The Student Council is a democratic organization representing all the students. The Council is comprised of a President, Vice-President, and Secretary-Treasurer, who are elected by all the students; plus the class president and one other representative elected from the sophomore and freshman classes. Four faculty members appointed by the president of the college serve as an advisory committee to the Council.

It is the function of the Student Council to plan wholesome recreational and social activities for students; to encourage student discussion of campus problems and to present helpful student suggestions to the faculty and the administration; and to act generally in an advisory capacity to students. The Council sponsors formal dinners, dances, and other activities affecting the student body as a whole. In the second semester the Council invites all presidents and sponsors of other campus organizations to discuss school policy and submit proposals for policy changes to the college administration. From time to time the president of the college confers with the Council on other matters affecting student life. Members of the Council meet with the faculty discipline committee on all major disciplinary action.

The Student Council also exercises general supervision over other campus organizations and must approve the formation of any new special-interest activity group.

Alphabetical List of Currently Active Student Organizations in Particular Fields of Interest

The **Agriculture Club** sponsors special-interest programs in agriculture plus campus socials, barbecues, and picnics.

The **Bulldog Barks** staff produces the campus newspaper.

The **Circle K Club** is a civic and service organization for men students, jointly sponsored by the college and community Kiwanis clubs.

The **Health Club** is open to all men students interested in physical fitness. Weights and benches, and other items of gymnastic equipment, are available for club members.

The **Home Economics Club** sponsors style shows, teas, dinners, and other social activities for those with a special interest in home economics.

The **"P" Club** is composed of those who have won Perkinson letters in athletics.

The **Perkolator** staff produces the college yearbook.

The **Perkinson Classical Music Club** brings together students who enjoy good music.

Phi Beta Lambda is a national business education society.

Phi Theta Kappa is a national junior college honorary scholastic society emphasizing scholarship and leadership.

Campus Religious Life and Activities

Students are encouraged to participate in Christian activities of their choice; and campus religious organizations are particularly active.

The **Christian Council** is made up of representatives of all of the campus religious groups. It sponsors the annual Religious Emphasis Week, the Easter Sunrise Service, and other campus-wide religious activities.

Denominational clubs include: the **Baptist Student Union**; the **Canterbury Club**; the **Newman Club**; the **Westminster Fellowship**; and the **Wesley Foundation**. Some denominations maintain full-time or part-time student secretaries on the campus.

Non-denominational organizations, such as the **Y.M.C.A.** and the **Y.W.C.A.** also do much to promote spiritual development.

Band and Choir: Campus Life and the Community

The Perkinston campus is known for its musical activity; and frequent off-campus appearances of the musical groups emphasize Perkinston's contribution to the cultural life of its supporting community.

The Band and Orchestra, including the girls' parade unit, the Perkettes; and the College Choir are the two main musical groups. Drawn from the choir are such smaller groups as the Girls' Ensemble, Boys' Quartet, etc.

Student Discipline and Regulations

Perkinston expects its students to conduct themselves as ladies and gentlemen. The college purpose is to encourage proper conduct as a result of proper thinking. Every faculty member is responsible for discipline and is expected to participate in formulating disciplinary policies. Every student is responsible not only for his own conduct, but also for his influence on his fellow students. Students attitude is a powerful force in self-government; and the more the students can govern their own behavior, the less will be the need for faculty or administrative intervention.

The specific regulations governing student conduct which have been tested by experience are spelled out in the **Student Handbook**, a copy of which is provided each entering student — dormitory or "day".

The following regulations, most of which are repeated in the **Student Handbook**, make explicit the more important guides to conduct, and are included here for the information of parents as well as of prospective students.

The presence of faculty sponsors is necessary when student groups meet for parties, picnics, etc. The exception to this general rule is Sunday church attendance in the local community, and attendance at religious meetings on the campus under the direction of organized religious groups. Students are encouraged to attend Sunday church, but are not required to do so. Students who do not attend, however, are expected to show proper respect by staying in their dormitories and not creating noise or disturbance on the campus or playing fields.

Women dormitory students are not expected to leave the campus before 5:00 P.M. without permission from the Dean of Women. Those who have a standing permit from their parents may leave the campus from 5:00 P.M. to 10:00 P.M. by signing out of their dormitory. Dormitory men students may leave at any time by signing out, but should return to the campus by 11:00 P.M.

The college automatically limits participation in extra-curricular activities of students on academic probation. These students are required to observe strict study hours during the probationary period.

The faculty Discipline Committee executes all major disciplinary action; this committee has general supervision of, and final authority in, all questions of student behavior.

GRADUATES OF REGULAR SESSION 1961-62

COLLEGE DIVISION

Ainsworth, James J. - Gulfport
 Albritton, Mary E. - Lucedale
 Alliston, Albert G. - Saucier
 Anderson, Oliver L. - Gulfport
 Barthes, Francis J. - Biloxi
 Babuchna, Paul L. Jr. - Biloxi
 Bass, Frank P. Jr. - Biloxi
 Beauges, Gerald J. - Biloxi
 Bistie, Robert O. - Biloxi
 Blackwell, Katherine F. - Biloxi
 Boffies, Russell C. Jr. - Biloxi
 Boyd, Richard H. - Saucier
 Boyette, James E. Jr. - Crestview, Fla.
 Brannan, Linda N. - Lucedale
 Breland, Barbara F. - Wiggins
 Brown, Gloria E. - Crestview, Fla.
 Brown, Thomas H. IV - Bogalusa, La.
 Byrd, Frances R. - Lucedale
 Bradley, Kenneth R. - Gulfport
 Brown, Robin L. - Gulfport
 Carter, Gayle - Pascagoula
 Casey, Marion L. - Biloxi
 Causey, James Howard - Florala, Ala.
 Cavalier, Wendell F. - Biloxi
 Chambers, Elvia E. - Fairhope, Ala.
 Chunn, David G. - Escatawpa
 Clark, Anne R. - Ocean Springs
 Clark, Linda C. - Moss Point
 Cochran, Charles D. - Brooklyn
 Cochran, Howard B. - Brooklyn
 Compton, Thomas R. - Biloxi
 Conway, Edward D. - Biloxi
 Cooley, John W. - Lucedale
 Cospelich, Margaret A. - Miss. City
 Cumbest, Joey L. - Pascagoula
 Curvin, Ralph D. - Biloxi
 Cutler, Zoa L. - Gautier
 Daughdrill, Karen A. - Lucedale
 Davis, David R. - Lucedale
 Davis, Edna E. - Moss Point
 Deeny, Charles B. - Mason City, Iowa
 Dees, Jeffery W. - Ocean Springs
 Dellenger, Earl J. - Biloxi
 Dickens, Lillie M. - Gulfport
 Dobbs, George L. - Biloxi
 Dobbs, Larry E. - Gulfport
 Dukes, Gerald E. - Foley, Ala.
 Easterling, Dorothy J. - Perkinson
 Edwards, Ned C. Jr. - Perkinson
 Ellis, Faiba M. - Long Beach
 Evans, Beverly J. - Perkinson
 Fairley, Donald E. - Gulfport
 Favre, Gerald J. - Gulfport
 Fitzgerald, Teta M. - Baton Rouge, La.
 Flowers, William H. - Foley, Ala.
 Ford, Rebecca A. - Gulfport
 Foster, William J. - Moss Point
 Frita, Wilhelmina C. - Biloxi
 Furr, Sarah J. - Pascagoula
 Galle, Charles L. - Ocean Springs
 Gandy, Sharon F. - Pascagoula
 Gavin, Robert F. - Gulfport
 Geiser, Jerilyn L. - Biloxi
 George, Joanne M. - Pascagoula
 Goff, Robert L. - Ocean Springs
 Goodwin, James D. - Pascagoula
 Goodwin, Nancy C. - Long Beach
 Gordon, Bernie R. - Gulfport
 Green, Shackford O. Jr. - Leaf
 Grooms, L'Roy P. - Gulfport
 Guertin, Francis A. - Brooklyn, N. Y.
 Gunzetti, Frank Jr. - Biloxi
 Harbison, Ora R. Jr. - Biloxi
 Hatten, Lewis E. - Wiggins
 Hayden, Joseph F. - Pass Christian
 Heard, Cullum J. - Biloxi
 Holland, John H. - Lucedale
 Horne, Marsha S. - Lucedale
 Hunt, William - Biloxi
 Irwin, Mildred A. - Gulfport
 Janowski, Henry T. - Crestview, Fla.
 Janus, Francis E. - Biloxi
 Johnson, Meighan G. - Ocean Springs
 Johnson, Walter F. - Wiggins
 Jones, Ransom P. III - Ocean Springs
 Joyner, William P. - Gautier
 Kasovich, Gabriel C. - Biloxi
 Keith, Margaret S. - Ocean Springs
 Kennedy, Tennis - Biloxi
 Killcrease, Wallace E. - Lucedale
 King, James J. - Brooklyn
 Kleinschmidt, Fredna S. - Gulfport
 Ladner, Sylvia A. - Gulfport
 Lamb, Milton E. - Lucedale
 Lamey, Richard W. - Biloxi
 Lee, Emma K. - Biloxi
 Lewis, Edith M. - Gulfport
 Lott, Charles T. - Pascagoula
 Lucas, Jerry L. - Lucedale
 McCoy, Patay D. - Pascagoula
 McCuiston, William T. - Miami, Fla.
 McDaniel, David C. - Long Beach
 McDavid, George C. Jr. - Lucedale
 McGraw, Thomas W. Jr. - Biloxi
 McReynolds, Robert B. - Ocean Springs
 Maillet, Jerry K. - Biloxi
 Martin, William P. - Pascagoula
 Miller, Gerald J. - Gulfport
 Miller, Michael E. - Casselberry, Fla.
 Moore, Martha C. - Lucedale
 Moore, Theresa Mayrene - Wiggins
 Murfee, Ruth C. - Biloxi
 Murray, Janice E. - Biloxi
 O'Neal, Roscoe L. Jr. - Perkinson
 Onorato, C. J. - New Orleans, La.
 Owens, Theresa D. - Wiggins
 Parker, Donald B. - Biloxi
 Parker, James W. - Biloxi
 Posey, Sidney M. - Moss Point
 Ramsey, Van Alton - Pascagoula
 Randall, John S. - Pascagoula
 Ray, Nathan A. - Lucedale
 Redfield, David F. - Wiggins
 Renick, Twila D. - Perkinson
 Robertson, Hubert C. Jr. - Perkinson
 Rogers, Judith A. - Gulfport
 Rustin, Gwendolyn - Lucedale
 Ryals, Dewey M. - Biloxi
 Sanders, Virginia L. - Ocean Springs
 Saucier, Gary J. - Pass Christian
 Saucier, Glenn J. - Biloxi
 Shows, James Benjamin - Lucedale
 Slider, Donald C. - Pascagoula
 Smith, Mary S. - Biloxi
 Speed, Alfred M. - Ocean Springs

St. Amant, Otis P. Jr. - Biloxi
 Steiner, Beckwith Jr. - Biloxi
 Stockton, Robert F. - Biloxi
 Strickland, Doris R. - Perkinston
 Taylor, Bennis L. - Vancleave
 Taylor, William F. - Biloxi
 Thomas, Mary A. - Biloxi
 Tinsley, Robert G. - Gulfport
 Tisdale, William D. - Springhill, La.
 Turner, Ford E. - Petal
 VanCourt, Gerald B. - Ocean Springs
 Vierling, Joan V. - Gulfport
 Vitter, Merrill A. Jr. - New Orleans, La.

Wallace, Geraldine - Gulfport
 Wallace, Ella A. - Lucedale
 Wambegans, Anthony - Pass Christian
 Washer, Cyril A. III - Biloxi
 Welford, Rufus W. - Lucedale
 White, John E. - Ocean Springs
 White, J. Royer - Wiggins
 Wilson, Edward W. - Ocean Springs
 Woodward, Jo Ann - Lucedale
 Worley, Carolyn A. - Wing, Ala.
 Wright, Thomas G. - Gulfport
 Yonge, Jimmy L. - Lucedale
 Zink, Roberts H. - Biloxi
 Zalocusky, Janet C. - Biloxi

COLLEGE SPECIAL HONOR GRADUATES

Miller, Gerald J. - Gulfport

COLLEGE HONOR GRADUATES

Blackwell, Katherine F. - Biloxi
 Casey, Marion L. - Biloxi
 Clark, Linda C. - Moss Point
 George, Joanne - Pascagoula
 Heard, Cullum J. - Biloxi

Horne, Marsha B. - Lucedale
 Lucas, Jerry L. - Lucedale
 Parker, Donald B. - Biloxi
 Wambegans, Anthony - Pass Christian

HIGH SCHOOL DIVISION

Allen, William R. - Ocean Springs
 Bellew, R. J. Jr. - Saucier
 Blackwell, Gwendolyn M. - Saucier
 Bond, Delma O. Jr. - Saucier
 Bond, Georgia F. - Perkinston
 Bond, Iona J. - Saucier
 Bond, Walter - Saucier
 Bond, Wyvena P. - Perkinston
 Boyd, Robert D. - Saucier
 Breland, Ray D. - Wiggins
 Broadus, J. D. Jr. - Saucier
 Diamond, Ruth M. - Saucier
 Donahue, Robert D. - Saucier
 Edwards, Sarajane - Saucier
 Fayard, Carolyn A. - Saucier
 Fentress, James W. - Gulfport
 Flanary, Oni L. - Saucier
 Fore, Brenda K. - McHenry
 Fore, Maxine - McHenry
 Freret, Rene J. - Saucier
 Gowen, Marcus A. Jr. - Perkinston
 Hickman, Hilda - Perkinston
 Hill, Carolyn V. - Hantsboro
 Hoopes, Dorothy F. - Ocean Springs
 Jones, Carol M. - Perkinston

Ladnier, Lavon - Perkinston
 Lewis, Patricia E. - Perkinston
 Loper, Lamar - Perkinston
 McWhorter, Vivian D. - McHenry
 Owens, Dale - Wiggins
 Page, Louise I. - Saucier
 Parker, Donice L. - Perkinston
 Patton, Edith - Perkinston
 Price, Frank - Perkinston
 Redmond, Joann - Saucier
 Renick, Otis B. Jr. - Perkinston
 Rhodes, Kenneth M. - Perkinston
 Rogers, Jannette - Perkinston
 Rogers, Janice - Perkinston
 Rogers, John - Perkinston
 Rouse, Wanda E. - Saucier
 Rutledge, Wanda L. - McHenry
 Schonewitz, Linda E. - Saucier
 Shavers, Elizabeth A. - Saucier
 Shaw, Glenn D. - Perkinston
 Shoemaker, Carolyn A. - Perkinston
 Sumrall, David R. - Saucier
 Sumrall, Margaret A. - Perkinston
 Wedgeworth, Brenda M. - Saucier
 Willis, Georgia M. - McHenry

HIGH SCHOOL HONOR GRADUATES

Howard H. Bond - Hattiesburg
 Kathleen McKnight - Clark-Washington,
 S. R. "Doc" Davis - Gulfport

Ruby Daffin Harvey - Lucedale
 Harrison Sloan

1963

GRADUATES OF SUMMER SESSION 1962

Bell, Richard L. - Long Beach
 Bolton, Barbara L. - Mobile, Ala.
 Burnham, Evelyn J. - Perkinston
 Calfas, June E. - Moss Point
 Carpenter, Rita S. - Moss Point
 Clark, Jannette - Moss Point
 Cubbison, Joan E. - Biloxi
 Cummins, Violet - Pascagoula
 Gunter, Lillie A. - Kreole
 Johnson, Ronald - Moss Point
 May, Junior W. - Miss. City

Nix, Gerald W. - Orlando, Fla.
 Ousley, Edward J. - Mobile, Ala.
 Owens, Patricia - Perkinston
 Patton, Barbara A. - Saucier
 Rayborn, Katie L. - Pascagoula
 Scheffler, Betty - Pascagoula
 Taylor, Clifton D. - Ocean Springs
 Touchstone, Edna M. - Wiggins
 Walley, Patricia A. - Hurley
 Warnock, Bennie J. - Moss Point
 White, Helen J. - Gautier

SPECIAL HONOR GRADUATES

Scheffler, Betty - Pascagoula
 Warnock, Bennie J. - Moss Point

SUMMER SESSION 1962

Sophomores

Avera, John W. - Gulfport
 Bell, Richard L. - Long Beach
 Blackwell, Hollis J. - Lucedale
 Bolton, Barbara L. - Mobile, Ala.
 Bosarge, Margaret E. - Pascagoula
 Bright, Gloria - Pascagoula
 Burnham, Evelyn J. - Perkinston
 Burns, Josephine - Pascagoula
 Calfas, June E. - Moss Point
 Clarke, Beryl L. - Pascagoula
 Clark, Janette - Moss Point
 Corley, Dorothy S. - Lucedale
 Cowser, Theo Dale - Perkinston
 Cubbison, Joan E. - Biloxi
 Cummins, Violet A. - Pascagoula
 DeLaughter, Hilda M. - Biloxi
 Doleac, John E. - Long Beach
 Dowdy, Charles Wayne - Gulfport
 Durbin, Carolyn D. - Ocean Springs
 Easterling, Lila - Wiggins
 Ellerbrake, Richard F. - Biloxi
 Field, Lee C. - New Orleans, La.
 Floyd, Sara B. - Gulfport
 Guley, Elizabeth - Pascagoula
 Gunter, Lillie A. - Kreole
 Higgins, Patricia S. - Pascagoula
 Hunter, Katherine R. - Ocean Springs
 Johansen, Oscar W. - Gulfport
 Judge, Billy F. - Wiggins
 Kostmayer, Robert L. Jr. - Biloxi
 Kunz, Lester C. - Long Beach
 Ladner, Dotty S. - Gulfport
 Lee, Larry - Gulfport
 Lowery, Connor - Gulfport
 McAllister, Linda A. - Gulfport
 McEachern, Miriam - Lucedale

McElroy, William - Biloxi
 McNamee, James W. - Biloxi
 Marrone, Mary - Biloxi
 Matherne, Kathleen - Litcher, La.
 May, Junior W. - Miss. City
 Morano, Joseph A. - Gulfport
 Mory, John L. - Biloxi
 Nix, Gerald W. - Orlando, Fla.
 Oberlies, Fred J. - Gulfport
 Parent, Katherine - Biloxi
 Patenotte, Roy R. - Gulfport
 Patton, Barbara A. - Saucier
 Pearson, Fredna E. - Wiggins
 Plumlee, Larry - Gulfport
 Price, Melva J. - Biloxi
 Rainwater, Carolyn - Perkinston
 Rayborn, Katie L. - Pascagoula
 Richardson, Martin L. - Gulfport
 Roberts, Barbara A. - Mobile, Ala.
 Roberts, Janice E. - Mobile, Ala.
 Ross, Alice E. - Miss. City
 Rowell, Patricia C. - Wiggins
 Scheffler, Betty J. - Pascagoula
 Sharp, Charles - Pascagoula
 Shaw, Gaye D. - Pascagoula
 Summers, Fishel W. - Mobile, Ala.
 Taylor, Clifton D. - Ocean Springs
 Terkeurst, Patricia M. - Pascagoula
 Toombs, Carol R. - Gulfport
 Touchstone, Edna M. - Wiggins
 Walley, Patricia - Hurley
 Ward, Howard W. Jr. - Lyman
 Warnock, Bennie J. - Moss Point
 Warren, Lee Roy - Handsboro
 Watters, Walter - Biloxi
 Watts, Opal W. - Wiggins
 Wells, Elmer J. - Biloxi
 White, Helen J. - Gautier

Freshmen

Atwood, Dolores - Wiggins
 Aubert, Robert - Gulfport
 Begeman, Dorothy - Mobile, Ala.
 Boswell, Arrie A. - Biloxi
 Brown, Cheryl - Bogalusa, La.
 Brown, Linda - Mobile, Ala.
 Bullock, Dorothy - Moss Point
 Champion, Margaret - Theodore, Ala.
 Clark, Donald R. - Biloxi
 Coleman, Patricia - Biloxi
 Cowan, Melvin D. - Gulfport
 Cox, Sandra - Pass Christian
 Cuevas, Nelda - Perkinston
 Cuevas, Sallie - Gulfport
 Davis, Polly - Wiggins
 Dugan, Patricia M. - Pass Christian
 Drye, Hersel R. - Gulfport
 Eubanks, Nancy - Lucedale
 Favreau, Janet - Gulfport
 Fike, Cattie D. - McLain
 Flurey, Linda - Perkinston
 Ford, Sandra A. - Gulfport
 Gammage, James - Lucedale
 Gerald, Carolyn T. - Wiggins
 Goodhart, Jon G. - Gulfport
 Green, Dorothy - Pascagoula
 Gunn, Bettye - Biloxi
 Hamill, Margo - Biloxi
 Hawley, Maxine - Biloxi
 Hempstead, Hazel A. - Lucedale
 Hoag, James - Keesler AFB
 Holden, Carol - Poplarville
 Hudson, Iva L. - Biloxi
 Hunter, Linda K. - Biloxi
 Johnson, Arthur - Wiggins
 Johnson, Lee I. - Keesler AFB
 Jones, Betty D. - Pascagoula
 Jones, Carol - Perkinston
 Jones, Ramona - Biloxi

Kelly, Emmett - Gulfport
 King, Sherry - Moss Point
 Ladner, Bonnie L. - Pass Christian
 Lamberth, Janet - Gulfport
 Lane, Elisabeth A. - Wiggins
 Livingston, Joan L. - Moss Point
 Lott, Clarene M. - Gulfport
 Maki, Mary E. - Moss Point
 Marsland, Barbara A. - Biloxi
 Martin, Helen F. - Wiggins
 Means, Sharon E. - Pascagoula
 Melton, Thomas V. Jr. - Pascagoula
 Midgett, Gordon M. - Gulfport
 Miller, Robert - Gulfport
 Moncrief, Patricia Y. - Gautier
 Murray, Frances K. - Pascagoula
 Nacol, Raymond - Biloxi
 Owens, Brenda - Moss Point
 Rachley, Torrey G. - Gulfport
 Rayburn, Donna - Bond
 Reynolds, Homer - Keesler AFB
 Schaffer, Mary K. - Gulfport
 Schuster, Jacqueline M. - Gulfport
 Seymour, Ronald S. - Gulfport
 Smith, Billie G. - Pascagoula
 St. Martin, Joseph P. III - Biloxi
 Sullivan, Ingrid - Gulfport
 Tate, Nelda E. - Gulfport
 Thompson, Edith A. - Natchez
 Touchstone, Juanell - Wiggins
 Troutman, Lucy - Gulfport
 Tucci, Rachel I. - Biloxi
 Umer, Sue - McComb
 Van Bickle, Janet - Gulfport
 Vassalli, Melanie C. - Bay St. Louis
 Waggoner, Janet K. - Biloxi
 Waldrop, Robert A. - Gulfport
 Webb, John M. - Handshore
 Weimorts, Joyce B. - Mobile, Ala.

Irregulars

Albin, Marvin J. - Pascagoula
 Beagley, Thomas E. - Pascagoula
 Bennet, Glenda - Moss Point
 Buckelew, Richard E. - Moss Point
 Bullock, Johnny - Pascagoula
 Broome, Elyne F. - Pascagoula
 Calloway, Nell G. - Pascagoula
 Canfield, Aida R. - Escatawpa
 Casey, Barbara J. - Pascagoula
 Canterbury, Judy A. - Gautier
 Chandler, Larry M. - Pascagoula
 Clark, Rena - Moss Point
 Comeau, Alonzo F. - Pascagoula
 Davis, James D. - Pascagoula
 Davis, Robert H. - Pascagoula
 Day, Richard R. - Pascagoula
 Deas, Yvonne M. - Moss Point
 Delmar, Hudson L. - Pascagoula
 Doyle, Paul C. - Pascagoula
 Dudley, Ralph - Pascagoula
 Dunn, Palma G. - Pascagoula
 Dunston, Edward C. - Pascagoula
 Ferrer, Hurstle L. - Pascagoula
 Fisher, Bert - Pascagoula

Fyten, Richard A. - Pascagoula
 Gill, James - Pascagoula
 Goff, George C. - Ocean Springs
 Gonzales, Henry S. - Pascagoula
 Grafe, John F. - Moss Point
 Grissom, Eugenia - Pascagoula
 Haaf, Joseph B. - Pascagoula
 Hammons, Virgie M. - Pascagoula
 Harkey, Erik G. - Pascagoula
 Harris, Glenn A. - Pascagoula
 Harrison, William J. - Pascagoula
 Hicks, Dorothy L. - Pascagoula
 Hines, Aldruda E. - Kreole
 Holmes, Roy A. - Pascagoula
 Hooks, Robert W. - Pascagoula
 Hotalen, Robert J. - Pascagoula
 Hulbert, Thomas G. - Moss Point
 Hunt, Franklin E. - Biloxi
 Jane, Doris L. - Pascagoula
 Johnson, Ron L. - Moss Point
 Jones, Linda F. - Pascagoula
 Kilgo, Robert L. - Kreole
 Kingman, Margaret B. - Gautier
 Kittrell, Mary E. - Escatawpa

Lander, Linda L. - Moss Point
 Lawrence, Richard T. - Pascagoula
 Leggett, Charles V. - Pascagoula
 Leuba, Don L. - Moss Point
 Lewis, Lou E. - Moss Point
 Lewis, Walter E. - Pascagoula
 McInnis, Singleton - Moss Point
 McMahan, William L. - Pascagoula
 Mahan, Dorothy A. - Pascagoula
 Malborg, Charles L. - Pascagoula
 Martin, William F. - Pascagoula
 May, Provie E. - Pascagoula
 Medernach, Eugenia V. - Pascagoula
 Mhoon, John C. - Pascagoula
 Moore, Michelle M. - Pascagoula
 Mouchett, Janice W. - Pascagoula
 Nichols, Frank H. - Moss Point
 Peak, Lyda - Pascagoula
 Phillips, Billy J. - Pascagoula
 Pinson, Sandra G. - Pascagoula
 Posey, Annie E. - Moss Point
 Reames, James E. - Pascagoula
 Renfro, Linda J. - Moss Point
 Robinson, Betty M. - Pascagoula
 Schaeffner, Patricia A. - Pascagoula
 Simpson, Yvonne W. - Pascagoula

Smith, Anthony J. - Moss Point
 Smith, Kenneth W. - Pascagoula
 Spooner, Jo Etta - Moss Point
 Spruell, Violet M. - Moss Point
 Stevens, Neil - Pascagoula
 Switzer, Hilda L. - Kreole
 Sykes, Fawn K. - Pascagoula
 Sykes, Robert C. - Pascagoula
 Temeson, Virginia L. - Pascagoula
 Trigg, Johnnie - Ocean Springs
 Trigg, Johnnie - Ocean Springs
 Valverde, Toni J. - Pascagoula
 Waddell, Carol P. - Pascagoula
 Walker, Kenneth F. - Pascagoula
 Walker, Penelope E. - Pascagoula
 Wallace, Grovone - Pascagoula
 Ware, Beulah M. - Pascagoula
 Westfall, Edna E. - Moss Point
 Wheeler, Jacqueline P. - Grand Bay, Ala.
 Whidden, Allee A. Jr. - Pascagoula
 White, Robert D. - Pascagoula
 Williams, Edwin J. - Ocean Springs
 Williams, John E. - Escatawpa
 Wise, Jerry M. - Pascagoula
 Zirkelback, Charles E. - Pascagoula

REGULAR SESSION 1962-63

College Sophomores

Alexander, Leon E. - Wiggins
 Allen, John H. Jr. - Biloxi
 Allen, Larry J. - Lucedale
 Alliston, John C. - Saucier
 Amann, Kim - Handsboro
 Anderson, James A. - Long Beach
 Anderson, Jimmy - Ocean Springs
 Atwood, Dolores T. - Wiggins
 Avera, John W. - Gulfport
 Babuchna, Faye G. - Biloxi
 Ball, Frances C. - Cleveland, Tenn.
 Barich, Barbara C. - Ocean Springs
 Bayne, Richard L. - Biloxi
 Bell, Robert M. - Biloxi
 Bennett, William F. - Lucedale
 Bentz, Leonard L. - Pass Christian
 Bishop, Harry R. - Pass Christian
 Blessey, Martha E. - Biloxi
 Bond, Larry E. III - McHenry
 Bond, Thomas E. - Wiggins
 Bonifay, Carolyn W. - Pascagoula
 Bosarge, Richard B. - Kreole
 Bowden, Charles R. - Gulfport
 Boyd, James W. - Pensacola, Fla.
 Boyd, Robert D. - Saucier
 Brannan, Larry K. - Lucedale
 Breland, Gladys - Lucedale
 Brister, Richard T. - Moss Point
 Broadus, Caroline M. - Biloxi
 Broadnax, Thomas W. - Ocean Springs
 Brown, Cheryl M. - Bogalusa, La.
 Brown, Clifford W. III - Pascagoula
 Brown, James L. Jr. - Biloxi
 Brown, Kenneth G. Jr. - Lucedale
 Brown, Roger A. - Pascagoula
 Brown, Samuel W. - Crestview, Fla.
 Bullock, Dorothy M. - Moss Point
 Bullock, Johnny M. - Pascagoula
 Bumgarner, Sandra L. - Long Beach

Burris, Bert A. - Gulfport
 Butterworth, Carral W. - Keesler AFB
 Byrd, Peggy J. - Biloxi
 Calcote, Stephen E. - Gulfport
 Carney, W. Priscilla - Handsboro
 Carnley, Larry E. - Ocean Springs
 Carriere, Phil C. - Miss. City
 Carter, James L. - Wiggins
 Carter, Paul Keith - Gulfport
 Castanera, William T. - Biloxi
 Chatman, Howard R. - Keesler AFB
 Clark, Charles E. - New Orleans, La.
 Clark, Franklin G. - Pascagoula
 Clarke, Beryl L. - Pascagoula
 Claspell, Oyal B. - Gulfport
 Coleman, Grady F. Jr. - Gulfport
 Collins, Benjamin A. - Biloxi
 Collins, Boyce O. - Gulfport
 Compton, Margo A. - Mobile, Ala.
 Corley, Ronald W. - Keesler AFB
 Cowart, Theo D. - Perkinson
 Curtis, William G. - Biloxi
 Crandall, Ralph W. - Biloxi
 Davis, Maxie T. - Biloxi
 Davis, Polly F. - Wiggins
 Dennis, James V. - Delisle
 Doleac, John E. - Long Beach
 Donaldson, William L. - Gulfport
 Duke, Jessie T. - Lucedale
 Dungan, Louis L. - Lucedale
 Easterling, Lila E. - Wiggins
 Ellis, Judith O. - Ocean Springs
 Eubanks, Nancy L. - Lucedale
 Eubanks, William B. - Lucedale
 Ezell, Joe A. - Lucedale
 Fairley, Loretta - Wiggins
 Fairley, Norman R. - Moss Point
 Falgout, Freddie J. - Pensacola, Fla.
 Farve, Linda L. - Moss Point

- Farve, Raymond A. - Gulfport
 Fayard, Larry C. - Biloxi
 Fayard, Lee T. Jr. - Biloxi
 Field, Lee C. - New Orleans, La.
 Fields, Jimmy L. - Pascagoula
 Fisher, Bert - Pascagoula
 Flaherty, Patrick H. - Biloxi
 Fletcher, Ibert W. Jr. - Gulfport
 Flurry, LaVoughn A. - Perkinston
 Flurry, Linda A. - Perkinston
 Flurry, Rita A. - Perkinston
 Foretich, Jan F. - Ocean Springs
 Foster, Elizabeth J. - Biloxi
 Gartman, Ronald E. - Citronelle, Ala.
 Gaston, Henry V. - Grand Bay, Ala.
 Gail, Peggy J. - Gulfport
 Gibson, Arlo R. Jr. - Cantonment, Fla.
 Gill, Zenobia A. - Biloxi
 Gilly, Gary A. - Ocean Springs
 Gingerella, Edward E. Jr. - Biloxi
 Glasier, Denver L. - Ocean Springs
 Goff, George C. - Ocean Springs
 Gowen, Marcus A. Jr. - Perkinston
 Goodhart, Jon G. - Gulfport
 Green, Patricia G. - Handsboro
 Green, Patrick M. - Gulfport
 Griffin, Thomas L. - Moss Point
 Guilliot, Miriam A. - Ocean Springs
 Guzzetti, Charles A. - Biloxi
 Hagin, Ronald L. - Long Beach
 Hahn, Jesse C. - Biloxi
 Hammons, Henry A. - Long Beach
 Hansen, Stanley M. - Long Beach
 Harris, Henry H. III - Ft. Walton Beach,
 Harris, James C. - Ocean Springs
 Hartfield, Jerry - Gulfport
 Hartman, Paul R. - Foley, Ala.
 Hatch, Aurelia M. - Long Beach
 Hathorn, Sam S. - Basafield
 Haydel, Irvin B. - Gulfport
 Hayes, Bobby L. - McRae, Ga.
 Heitman, Harry B. - Biloxi
 Hempstead, Hazel A. - Lucedale
 Henley, James H. - Ft. Walton Beach, Fla.
 Heredia, Leon M. - Biloxi
 Herndon, James E. - Saucier
 Herrin, Harvey B. Jr. - Gulfport
 Hewes, Frederick B. - Gulfport
 Hickman, James M. - Albany, Ga.
 Hickman, Norma E. - Wiggins
 Higgins, Patricia S. - Pascagoula
 Hill, Jimmie C. - Daphne, Ala.
 Hogan, Johnny W. - Pass Christian
 Holland, Jerry L. - Lucedale
 Holland, Marion V. - Escatawpa
 Holland, Vondie M. - Lucedale
 Howell, Ralph - Lucedale
 Hulbert, Thomas G. - Moss Point
 Hunt, Franklin E. - Biloxi
 Hunter, Katherine R. - Ocean Springs
 Ingram, Phyllis A. - Gulfport
 Jackson, James E. - Biloxi
 James, Judy A. - Gulfport
 Jenkins, Patricia A. - Biloxi
 Jermyn, Dale T. - Moss City
 Johansson, Emily F. - Perkinston
 Jones, Brenda D. - Moss Point
 Jones, Patricia A. - Gulfport
 Jones, Ramona J. - Biloxi
 Jones, Tommy V. - Ocean Springs
 Josey, Jane F. - Lucedale
 Keeney, Virgil O. Jr. - Wiggins
 Kilcrease, Marie D. - Lucedale
 King, George D. - Biloxi
 King, James A. - Pascagoula
 Kisner, Jack E. - Biloxi
 Kostmayer, Robert L. - Biloxi
 Kunz, Lester C. - Long Beach
 Ladner, Dotty S. - Gulfport
 Ladner, Gloria J. - Gulfport
 Lamey, James G. - Biloxi
 Land, Elizabeth L. - Wiggins
 Lawrence, Sherry A. - Handsboro
 Lee, Colin R. - Lucedale
 Lee, Larry S. - Gulfport
 Lemon, Terry R. - Long Beach
 Leuenberger, James E. - Handsboro
 Leuenberger, James U. - Handsboro
 Letort, Henry E. - Biloxi
 Lindsay, Judy L. - Gulfport
 Longmire, Rose M. - Crosby
 Loper, David C. Jr. - Gautier
 Loper, John C. - Gautier
 Lopes, Kathryn B. - Biloxi
 Lott, Mary A. - Wiggins
 Lowe, Charles E. - Long Beach
 Lowery, Connor W. - Gulfport
 Lowry, Emma D. - Gulfport
 Lynch, Rance A. - Gulfport
 McDonald, Bertha G. - Gulfport
 McDonnell, Jude T. - Biloxi
 McEachern, Miriam F. - Lucedale
 McElroy, William R. - Biloxi
 McLeod, Mary E. - Lucedale
 McNamee, James W. - Biloxi
 McRaney, Harold D. - Biloxi
 Mabry, Mildred E. - Biloxi
 Mack, Charles L. - Pascagoula
 Malline, Dewayne A. - Pass Christian
 Mallette, Kenneth J. - Biloxi
 Malpass, Dennis B. - Biloxi
 Maples, Frank L. - Ocean Springs
 Marrone, Mary J. - Keesler AFB
 Marinovich, Jake M. - Biloxi
 Marsh, Michael D. - Clarion, Pa.
 Marshall, Victor C. - Lucedale
 Mattina, David E. - Ocean Springs
 Maumus, Xavier J. - Biloxi
 Mayfield, Joe C. - Fairhope, Ala.
 Masingo, Linda R. - Escatawpa
 Mellinger, Marilyn S. - Gulfport
 Melton, Thomas V. Jr. - Pascagoula
 Miques, Larry J. - Biloxi
 Miller, Michael L. - Lucedale
 Milner, John K. - Gulfport
 Misko, Charles - Biloxi
 Mitchell, Robert M. - Ocean Springs
 Moore, Nettie J. - Wiggins
 Moore, Warner O. - Biloxi
 Mora, J. Roberto - Guatemala-C.A.
 Morgan, Maurice C. - Gulfport
 Morgan, Herby R. - Wiggins
 Morris, Brenda K. - Ocean Springs
 Morris, Charles R. - Grand Bay, Ala.
 Mory, John L. - Biloxi
 Murphy, Ruth A. - Mobile
 Murrah, Floria K. - Lucedale
 Murray, Charles R. - Biloxi
 Murray, Frances R. - Pascagoula
 Murray, Joan F. - Gulfport
 Nacool, Raymond A. - Biloxi
 Neacale, Carl A. - Long Beach
 Neacale, Nicky C. - Pass Christian
 Netto, Tommy E. - Pass Christian

Hewbill, Edward E. - Lucedale
 Newman, Arthur E. Jr. - Biloxi
 Nichols, Frank H. - Moss Point
 Norman, Travis E. - Ocean Springs
 Norvell, Rona J. - Long Beach
 O'Bannon, Louis H. Jr. - Gulfport
 Oberlies, Fred J. - Gulfport
 O'Brien, Patricia A. - Biloxi
 O'Fallin, Patricia M. - Gulfport
 Oliver, Pamela A. - Falls Church, Va.
 Olsen, Mary J. - Biloxi
 Olson, Marvin P. - Gulfport
 O'Neal, Noble R. - Leaf
 Palazzolo, Ben V. - Gulfport
 Panter, Edward J. - Gulfport
 Parent, Katherine - Biloxi
 Patenotte, Roy R. - Gulfport
 Patton, James M. - Perkinston
 Patton, William C. - Sauvier
 Peak, John C. - Pascagoula
 Pearson, Fredna E. - Wiggins
 Pennsbaker, James B. - Lucedale
 Perry, Raymond J. - Gulfport
 Peters, Morris E. - Gulfport
 Pitman, Carlos M. - Lucedale
 Plumlee, Larry C. - Gulfport
 Poulos, John T. - Biloxi
 Quave, Arthur H. - Ocean Springs
 Ray, Wayne J. - Long Beach
 Rayburn, Sharon E. - Long Beach
 Reams, James E. - Pascagoula
 Reeves, Brenda G. - Pascagoula
 Reeves, John - Pascagoula
 Reulet, Kathleen E. - Gulfport
 Rhodes, Dianna - Long Beach
 Richards, Elizabeth A. - Moss Point
 Richardson, Martin L. - Gulfport
 Roane, Margaret A. - Gulfport
 Roberts, Barbara A. - Mobile, Ala.
 Roberts, Janice E. - Mobile, Ala.
 Roberts, Teddy L. - Gulfport
 Robinson, William A. - Pascagoula
 Rodgers, Fuller - Biloxi
 Ross, Stephen H. - Gulfport
 Rouse, Gerald A. - Lucedale
 Rouse, Judith C. - Lucedale
 Rouse, Miriam S. - Wiggins
 Rowell, Patricia C. - Wiggins
 Russell, Mary J. - Gulfport
 Rutherford, Louis W. - Perkinston
 Rutherford, Rodney H. - Biloxi
 Sadoris, Karen A. - Long Beach
 Sakowski, Robert - Keesler AFB
 Sauvier, Sadie L. - Sauvier
 Sawyer, John C. - Gulfport
 Scarborough, Patricia E. - Biloxi
 Scarbrough, Barney E. - Biloxi
 Schoniwitz, Billy J. - Sauvier
 Scully, Hugh S. - Long Beach
 Seal, James B. - Mobile, Ala.

Seaman, Roland T. - Kreole
 Senseney, J. William - Biloxi
 Shamburger, Ronald - Lyman
 Sheffield, Richard W. - Handsboro
 Shultz, Charles R. Jr. - Ocean Springs
 Skinner, Anthony O. - Biloxi
 Skrnich, Mike K. - Biloxi
 Smith, Evelyn - Perkinston
 Smith, Richard R. - Gulfport
 Smith, Thomas M. - Perkinston
 Soape, Sharon A. - Lucedale
 Stegall, Michael A. - Gulfport
 Stewart, Ric O. - Wiggins
 Stinson, Judith T. - Lucedale
 Stringfellow, Forrest W. - Lucedale
 Sumrall, Sara A. - Pass Christian
 Surratt, Benny J. - Gulfport
 Sweeney, Theodore B. - Wiggins
 Tate, Neida E. - Gulfport
 Taylor, Bobby C. - Biloxi
 Taylor, Larry W. - Wiggins
 Taylor, Sherry L. - Lucedale
 Terkeurst, Patricia M. - Pascagoula
 Terral, Betty M. - Pensacola, Fla.
~~Tharpe, Clifford J. Jr. - Handsboro~~
 Thomas, Clifton D. Jr. - Pascagoula
 Thurston, Rae R. - Long Beach
 Tucker, Barbara E. - Lucedale
 Turner, William E. - Moss, City
 Ulland, Ray S. - Biloxi
 VanDevander, Herman C. - Mobile, Ala.
 Vaughn, Glenda K. - Ocean Springs
 Walker, Burton L. Jr. - McHenry
 Walker, Jarrett L. - Long Beach
 Walker, Penelope E. - Pascagoula
 Walker, Sidney E. - Lucedale
 Wallace, Billie R. - Lucedale
 Walther, James G. - Cantonment, Fla.
 Ward, Howard W. Jr. - Lyman
 Washer, Cyril A. III - Biloxi
 Watters, Walter F. - Biloxi
 Watts, Gene E. - Long Beach
 Watts, Opal W. - Wiggins
 Webb, John M. - Handsboro
 Weimorts, Joyce B. - Mobile, Ala.
 Welford, Joann - Lucedale
 Wells, Elmer J. Jr. - Biloxi
 White, Karen J. - Wiggins
 Williams, Edwin J. - Ocean Springs
 Williams, Leslie H. - Lucedale
 Williams, Max J. - Gulfport
 Williams, Patricia J. - Pascagoula
 Williams, Rita M. - Perkinston
 Willingham, Larlie R. - Perkinston
 Wilson, Bailie L. - Gulfport
 Woodard, Johnnie L. - Lucedale
 Wozencraft, Warren L. - Lucedale
 Yeager, Carolyn D. - Wiggins

College Freshmen

Ainsworth, Charles A. - Gulfport
 Ainsworth, Elizabeth L. - Gulfport
 Akers, Terry W. - Biloxi
 Allen, Frances B. - Ocean Springs
 Allen, Harold W. - Biloxi
 Allen, Philip O. - Long Beach
 Allen, William L. - Pascagoula

Anderson, Carolyn A. - Gulfport
 Ashford, Charles B. - Pass Christian
 Aemus, Henry R. - Biloxi
 Aubert, Robert L. - Gulfport
 Ballinger, Ralph R. - Perkinston
 Baria, Patricia A. - Pascagoula
 Batchelor, Ralph E. - Gulfport

- Batson, Laura E. - Wiggins
 Baucum, Walter W. - Gulfport
 Baylor, William M. III - Gulfport
 Bayne, Russell L. Sr. - Biloxi
 Beasley, Thomas E. - Pascagoula
 Begeman, Dorothy F. - Mobile, Ala.
 Bendich, Sandra L. - Long Beach
 Benigo, James B. - Pass Christian
 Bennington, Betty S. - Pascagoula
 Benton, Perry E. - Pascagoula
 Bents, Fred J. - Pass Christian
 Berry, Clarence K. - Perkinston
 Bird, Paul V. - Biloxi
 Bishop, Robert G. - Pass Christian
 Black, Robert M. - Wiggins
 Blackwell, Gwendolyn M. - Saucier
 Blades, Joe D. - Moss Point
 Blake, William R. - Mobile, Ala.
 Blessay, Stephen C. - Biloxi
 Boettcher, Bonnie M. - Handsboro
 Bohannon, William J. - Pensacola, Fla.
 Bolender, Nina L. - Handsboro
 Boles, Dovel Jr. - Biloxi
 Bond, Felder Y. - Wiggins
 Bond, Georgia F. - Perkinston
 Bond, Harvey L. Jr. - Gulfport
 Bond, Ina Joyce - Wiggins
 Bond, Iona Jane - Saucier
 Boozer, Kenneth E. - Gulfport
 Borden, Diana E. - Ocean Springs
 Borsik, Louis M. Jr. - Gulfport
 Boswell, Arrie Ann - Biloxi
 Boutwell, Joe T. - Kresle
 Boyd, Richard E. - Hattiesburg
 Boyd, Robert D. - Saucier
 Boyd, Willis Clay - Ocean Springs
 Brady, Owen A. - Biloxi
 Brady, John E. - Gulfport
 Brechtel, Thelma E. - Ocean Springs
 Breland, Flora G. - Wiggins
 Brewer, Columbus T. - Keesler AFB
 Brewer, Marsha M. - Lucedale
 Briscoe, Phyllis D. - Moss Point
 Broadus, Arthur L. - Perkinston
 Broadus, Elizabeth D. - Moss Point
 Broderick, Evelyn E. - Biloxi
 Brooks, Carl H. - Lucedale
 Brooks, Dorothy V. - Gulfport
 Brooks, Harold W. - Gulfport
 Broome, James D. - Handsboro
 Brown, Jennie R. - Lucedale
 Brown, Linda C. - Grand Bay, Ala.
 Brown, William E. - Lucedale
 Browning, Patrick F. - Gulfport
 Bushea, Roger E. - Gulfport
 Butera, Tana M. - Biloxi
 Butterfield, Cheryl A. - Biloxi
 Byrd, Ruby M. - Biloxi
 Campbell, Harry B. - Ocean Springs
 Campbell, Beverly M. Jr. - Pascagoula
 Canisaro, Marion F. - Biloxi
 Canisaro, Vito J. Jr. - Biloxi
 Carco, Betty Jo - Pass Christian
 Carver, John R. - Biloxi
 Carver, Virginia L. - Biloxi
 Catchot, Diane C. - Biloxi
 Caudill, Gerald - Gulfport
 Champagen, Allen J. - Gulfport
 Chauvin, Alvin L. - Biloxi
 Chevalier, Bernard R. - Biloxi
 Cholerton, Eric R. - Biloxi
 Clark, Donald R. - Biloxi
 Clark, Jack W. - Gulfport
 Clark, Ralph E. - Miss. City
 Clemens, Ronald E. - Biloxi
 Cochran, Adina J. - Lucedale
 Coleman, Patricia A. - Biloxi
 Conti, Horace C. - Ocean Springs
 Cook, Jerry W. - Ocean Springs
 Cook, Lawrence M. - Biloxi
 Cooley, Eunice J. - Wiggins
 Cooley, Larry R. - Lucedale
 Counts, Phyllis K. - Crestview, Fla.
 Cowan, Melvin D. - Gulfport
 Cox, John P. - Biloxi
 Cox, Paula M. - Lucedale
 Cox, Sandra L. - Pass Christian
 Craft, Stephen A. - Biloxi
 Cuevas, Linda Fay - Gulfport
 Cuevas, Nelda J. - Perkinston
 Currey, Dennis E. - Pensacola, Fla.
 Daffin, Ronald H. - Lucedale
 Dahl, Joe D. - Gulfport
 Dalzell, Evelyn G. - Biloxi
 Daniels, Oscar J. - Long Beach
 Davidson, Anthony W. - Ocean Springs
 Davis, Barbara Sue - Ocean Springs
 Davis, Dick L. - Moss Point
 Davis, Larry J. - Lucedale
 Davis, Patricia M. - Gulfport
 Davis, Polly F. - Wiggins
 Davis, William M. Jr. - Gulfport
 Davis, Willie Robert - Lumberton
 Dawsey, Tommy N. - Wiggins
 Day, Stanley C. Jr. - Keesler AFB
 Dees, Sandra Ann - Ocean Springs
 Delaney, Edward J. - Keesler AFB
 Demoruelle, Theodore J. Jr. - Biloxi
 Dickerson, Rachel M. - Lucedale
 Dobbs, Karen E. - Biloxi
 DosSantos, Robert - Biloxi
 Dress, James C. - Keesler AFB
 Dubuison, Elgie R. - Pass Christian
 Dugan, Robert J. - Pascagoula
 Dunn, Elwyn L. - Mobile, Ala.
 Eddy, Gary R. - Keesler AFB
 Edwards, Sara Jane - Saucier
 Eldridge, Bryan R. - Long Beach
 Elliott, Wayne J. - Biloxi
 Ellison, David R. - Gulfport
 Embry, James A. - Gulfport
 Engerran, Kenneth W. - Miss. City
 Entekin, Connie N. - Wiggins
 Entekin, Helen M. - Ocean Springs
 Erhard, Betty T. - Gulfport
 Estis, Robert E. - Wilmer, Ala.
 Eubanks, Dora A. - Lucedale
 Eubanks, Dwain - Lucedale
 Eubanks, Edith A. - Wilmer, Ala.
 Fahy, Edmond F. - Bay St. Louis
 Farella, Gennaro C. - Brooklyn, N.Y.
 Farmer, Sandra S. - Pascagoula
 Farrell, Bernard J. - Keesler AFB
 Faulk, Nancy E. - Pensacola, Fla.
 Favreau, Janet A. - Gulfport
 Fayard, Lee T. Jr. - Biloxi
 Fealko, Ronald S. - Gulfport
 Ferrer, Cheryl A. - Pascagoula
 Fike, Cattie Des - McLean
 Fisher, Julian F. - Moss Point
 Flurry, William H. - Perkinston
 Ford, Richard G. - Wilmer, Ala.
 Ford, Sandra A. - Gulfport

- Fore, Doris M. - McHenry
 Fore, Glen R. - Perkinston
 Forister, Kenneth E. - Wiggins
 Franke, Billie Smith - Pascagoula
 French, Bonita A. - Pass Christian
 Freret, Rene J. - Saucier
 Frita, Gayden O. - Biloxi
 Fuller, James C. - Pascagoula
 Fuller, Robert W. - Pascagoula
 Gabriel, Lonnie S. - Biloxi
 Gammage, James R. - Lucedale
 Garelick, Jack - Gulfport
 Garrett, Richard W. - Cantonment, Fla.
 Garrick, Sheila L. - Mobile, Ala.
 Garrison, Sharon K. - Moss Point
 Gates, Robert J. - Fairhope, Ala.
 Gautier, Thomas H. - Biloxi
 Gavin, Donald E. - Biloxi
 George, Clifford E. - Ocean Springs
 Gerald, Carolyn A. - Wiggins
 Gilbert, Marshall R. - Lucedale
 Gilbert, Roger A. - Lucedale
 Gipson, Jack W. - Gulfport
 Gober, Mattie M. - Gulfport
 Gonzales, Henry J. - Pascagoula
 Gowen, Marcus A. Jr. - Perkinston
 Graham, Joseph R. - Escatawpa
 Graham, Linda Sue - Biloxi
 Grant, Curtis T. - Biloxi
 Grant, Thomas B. - Biloxi
 Grantham, Glen E. - Wiggins
 Grantham, Jacqueline M. - Pensacola
 Graves, William - Biloxi
 Green, Dorothy A. - Pascagoula
 Green, Joyce M. - Gulfport
 Grierson, Arnold L. - Moss Point
 Guillist, James R. - Ocean Springs
 Guinn, Thomas L. - Gulfport
 Guinn, Willie Ruth - Gulfport
 Gunn, Kay Lynnann - Pascagoula
 Hall, Emilie F. - Wiggins
 Hamill, Margo - Biloxi
 Hanson, Linda S. - Gulfport
 Hare, Janice A. - Long Beach
 Harris, Toulmin E. - Escatawpa
 Harris, Glenn A. - Pascagoula
 Hateley, Carleen M. - Moss Point
 Hathecock, Raymond - Lucedale
 Haugen, Shirley L. - Gulfport
 Hayes, Roy D. - Sylacauga, Ala.
 Hays, Bertha V. - Biloxi
 Heidingsfelder, Robert - Waveland
 Henderson, John R. - Gulfport
 Henderson, Tommy R. - Long Beach
 Henry, Thomas - Gulfport
 Hernandez, Rocael - Guatemala, C.A.
 Herrera, Eduardo - Guatemala City, C.A.
 Herring, Elisha C. - Foxworth
 Herrington, Murphy - Miss. City
 Hess, Jere W. Jr. - Fruitland Park
 Hickman, Mary V. - Perkinston
 Higginson, Lorin V. - Keesler AFB
 Hinton, Malcolm E. - Lucedale
 Hoag, James L. - Keesler AFB
 Hobbs, Richard L. - Gulfport
 Hode, Ralph E. - Gulfport
 Holcomb, Ruby M. - Long Beach
 Holcomb, William T. - Miss. City
 Holland, Gerald D. - Lucedale
 Holm, Francis L. - Ocean Springs
 Hopper, Dennis W. - Winona
 Horne, Douglas F. - Biloxi
 Hudson, Alvin M. - Pascagoula
 Hudson, Iva Lois - Biloxi
 Hudson, Jerald W. - Pascagoula
 Hughes, Jack B. - Ocean Springs
 Hunter, Linda Kay - Biloxi
 Hutchinson, Joe D. - Florala, Ala.
 Inman, Robert H. - Mobile, Ala.
 Ivey, Joyce V. - Pascagoula
 Ivey, William L. - Lucedale
 Jefferson, Raymond J. Jr. - Pass Christian
 Jermy, Dorris R. - Gulfport
 Jolis, Albert - Ocean Springs
 Jolis, Peter - Ocean Springs
 Johnson, Arthur L. - Wiggins
 Johnson, Robert F. - Gulfport
 Jones, Betty Diane - Pascagoula
 Jones, Carol M. - Perkinston
 Jones, Roy W. - Miss. City
 Kates, Rita M. - Biloxi
 Keegan, Francis L. - Biloxi
 Kelley, Amy M. - Gulfport
 Kimbell, Rebecca A. - Gulfport
 Kimbell, Tommy E. - Gulfport
 Kime, Jack D. - Biloxi
 Kinsey, Henry E. - Gulfport
 Kirk, Brenda S. - Pascagoula
 Knight, George M. - Lucedale
 Knight, Roger R. - New Orleans, La.
 Koch, Tommy - Wiggins
 Kostelnik, John C. - Gulfport
 Kostmayer, Thomas L. - Biloxi
 Kraft, Melvin G. - Biloxi
 Lacy, Lamont H. - Gulfport
 Ladner, Bonnie L. - Pass Christian
 Ladner, Larry W. - Gulfport
 Ladtner, Donald H. - Biloxi
 Ladtner, Oba Lavon - Perkinston
 Lafaye, Ogden W. Jr. - Pass Christian
 Lamberth, Janet G. - Gulfport
 LaRosa, Sam J. Jr. - Long Beach
 Larrabee, Martha K. - Cottage Hill, Fla.
 Latimer, Barbara A. - Gulfport
 Leach, Hal A. - Pascagoula
 LeBard, Aurelia M. - Biloxi
 Ledbetter, Jacqueline - Long Beach
 Lee, James J. - Lumberton
 Lee, Larry G. - Lumberton
 Lee, Nora Jean - Miss. City
 Lee, William C. Jr. - Mobile, Ala.
 LeFebure, Lauren M. - Biloxi, Miss.
 Leisauk, Rafield J. - Biloxi
 LeMay, Darleen A. - Biloxi
 Levens, Louis R. - Gulfport
 Lips, Howard T. - Gulfport
 Lisana, Diana C. - Gulfport
 Logel, Norma J. - Miss. City
 Lomanzo, Frederick A. - Moss Point
 Loper, Robert M. - Bisbee, Ariz.
 Lott, Clarence M. - Gulfport
 Lott, Elizabeth G. - Bond
 Lott, Tessie C. - Perkinston
 Love, Jerry D. - Perkinston
 Luckie, Eugene H. - Mobile, Ala.
 Lung, Lloyd - Panama City, Fla.
 Lyons, John J. - Moss Point
 Lyons, Joseph S. - Gulfport
 McCain, Thomas E. - Long Beach
 McDonald, Linda A. - Pass Christian
 McEachern, William F. - Lucedale
 McGowan, Myrna Jo - Pascagoula
 McGuire, Jimmy D. - Gulfport
 McKay, Charles L. - Gulfport

- McKeown, Shannon M. - Biloxi
 McKnight, Homer L. - Long Beach
 McLain, Paris D. - Pascagoula
 McMahan, William L. - Pascagoula
 McMahon, Charles H. - Biloxi
 McMichael, Charlie F. - Gulfport
 McMullin, Jeanie - Biloxi
 McMurphy, Charles W. - Lucedale
 McMurphy, Juanita P. - Perkinston
 McNair, Vivian A. - Saucier
 McNeill, Sylvia G. - Gulfport
 Mabry, Clyde H. - Biloxi
 Maddox, Hazel L. - Whistler, Ala.
 Maki, Mary E. - Moss Point
 Mandal, Betty R. - Gulfport
 Maniscalco, Gary L. - Biloxi
 Markese, Vincent - Gulfport
 Marsland, Barbara A. - Biloxi
 Martin, David D. - Florala, Ala.
 Martin, Helen F. - Perkinston
 Martin, Jon L. - Gulfport
 Martin, Rosa Jane - Gulfport
 Mathes, Mary C. - Biloxi
 Mathews, Carolyn J. - Biloxi
 Matthews, John R. - Gulfport
 Means, Sharon E. - Pascagoula
 Messer, Kathryn A. - Ocean Springs
 Midkiff, Marie M. - Gulfport
 Milford, John T. - Keesler AFB
 Miller, Edward O. - Gulfport
 Miller, Jerry - Ocean Springs
 Miller, Jerry Wayne - Long Beach
 Miller, Robert R. - Gulfport
 Mills, Billy C. - Gulfport
 Mitchell, Tommy H. - Biloxi
 Mohr, Ronnie E. - Ocean Springs
 Moncrief, Patricia - Gautier
 Monk, Agnes P. - Biloxi
 Moore, Clifford L. - Biloxi
 Moore, Kay - Ocean Springs
 Moore, Michelle - Pascagoula
 Moran, Barbara A. - Pass Christian
 Moran, M. Jean - Biloxi
 Moran, Terrill J. Jr. - Saucier
 Moses, Tommy L. - Gulfport
 Morgan, John F. - Lucedale
 Morie, Winfred L. - Kreole
 Morris, Winford B. - Moss Point
 Morrison, Charles A. - Gulfport
 Murphy, Glen V. - Gulfport
 Murray, Francis A. - Biloxi
 Musgrave, Cortland M. - Keesler AFB
 Myrick, John A. - Ocean Springs
 Naill, Albert R. - Pascagoula
 Napier, Nancy L. - Milner, Ga.
 Neal, Ronald S. - Pascagoula
 Neaume, Phyllis - Gulfport
 Nelson, Willis E. Jr. - Gulfport
 Newman, Harold L. - Handsboro
 Noble, Harvey Lee - Gulfport
 Norvell, Jacqueline A. - Pass Christian
 Oberlies, Gerald E. - Gulfport
 Odell, Joyce L. - Biloxi
 Odell, Lloyd E. - Keesler AFB
 Oliver, Saul L. Jr. - Gulfport
 O'Mar, Richard - Gulfport
 O'Neal, Floy L. - Leaf
 O'Neal, Ronnie - Wiggins
 Ory, Ernest D. Jr. - Moss Point
 Overstreet, Joye R. - McHenry
 Owens, Brenda D. - Moss Point
 Owens, Donn R. - Wiggins
 Owens, Douglas E. - Wiggins
 Owens, Louis F. - Semmes, Ala.
 Pabon, Carlos B. - Ocean Springs
 Paciera, Paul A. Jr. - Gulfport
 Park, Donald E. - Ocean Springs
 Parker, Charles W. - Biloxi
 Parker, George - Phoenix, Ariz.
 Parrish, Robert W. - Pascagoula, Fla.
 Pates, Frank G. - Biloxi
 Patton, Edith R. - Perkinston
 Peebles, Samuel M. - Lucedale
 Pelham, Charles R. - Andalusia, Ala.
 Pemberton, Wayne D. - Biloxi
 Penland, Robert T. - Moss Point
 Perez, Emily M. - Biloxi
 Peterson, James S. - Pascagoula
 Peterson, Merla Faye - Gautier
 Pieszak, Josephine S. - Biloxi
 Pinnix, John F. - Long Beach
 Polovich, C. Renell - Biloxi
 Pope, Robert S. - Grand Bay, Ala.
 Poney, Nancy E. - Moss Point
 Preston, Linda L. - Wiggins
 Fridgen, Leonard D. - Wilmer, Ala.
 Ramage, Wallace L. - Handsboro
 Rameo, Byron C. - Pascagoula
 Ray, Edward D. Jr. - Biloxi
 Rayburn, Donna - Bond
 Read, Gerald E. - Lucedale
 Redd, Donna C. - Gulfport
 Redmond, M. Joann - Saucier
 Reed, Arnold W. - Biloxi
 Renick, Otis B. Jr. - Perkinston
 Rhodes, Kenneth M. - Perkinston
 Rising, Stanley A. Jr. - Melrose, Fla.
 Robertson, Ronald E. - Long Beach
 Rogers, James L. - Gulfport
 Rogers, Margaret A. - Leaf
 Rogers, Richard A. - Gulfport
 Rogers, Mary T. - Gulfport
 Ross, Mary E. - Moss Point
 Rouse, Wanda E. - Saucier
 Rouse, Robert O. - Gulfport
 Russell, Beverly - Pass Christian
 Rutledge, Wanda L. - McHenry
 Sanders, Harry A. - Ocean Springs
 Sarros, James H. - Gulfport
 Saucier, Sadie Lee - Saucier
 Sauls, Chester V. - Gulfport
 Sawyer, Jesse C. - Gulfport
 Sawyer, Lenwood S. - Gulfport
 Saxon, Paul D. - Hattiesburg
 Scarborough, R. Marie - Long Beach
 Scarborough, Ronald - Pascagoula
 Scarborough, Ronald L. - Gulfport
 Schaffer, Mary K. - Gulfport
 Scharr, Andrew J. - Ocean Springs
 Scheeler, Roger C. - Long Beach
 Schoenick, Richard - Biloxi
 Schonewitz, Linda E. - Saucier
 Schuster, Jacqueline M. - Gulfport
 Sekul, Diane - Perkinston
 Sellers, James F. - Wiggins
 Serpas, Ernest J. - Handsboro
 Seymour, Barbara A. - Biloxi
 Seymour, Henry A. - Biloxi
 Sharp, Lloyd V. - Biloxi
 Shaw, Crayton L. - Perkinston
 Sherman, Robert L. - Biloxi
 Shows, Ervin S. - Lucedale
 Shrader, Richard D. - Ocean Springs
 Sidoti, Dorrie - Biloxi
 Sikora, Wayne E. - Ocean Springs
 Simmons, Charles G. - Wiggins

- Simmons, James C. - Purvis
 Singletary, Frank H. - Ocean Springs
 Sivills, Robert C. - Biloxi
 Slade, John S. - Gulfport
 Smith, Ben A. - Wiggins
 Smith, Dennis - Lucedale
 Smith, Gwendolyn J. - Miss. City
 Smith, Jackson P. - Miss. City
 Smith, Robert L. - Gulfport
 Soljan, Michael W. - Biloxi
 Spencer, Dean W. - Ocean Springs
 Spooner, Jo Etta - Moss Point
 Starks, Samuel P. Jr. - Biloxi
 Stegall, Michael A. - Gulfport
 Stewart, Eva Mae (Mrs.) - Wiggins
 Stewart, John M. - Ocean Springs
 Stinson, Sally K. - Gulfport
 Stockett, John H. - Long Beach
 Stone, Norman A. - Gulfport
 Story, Susan D. - Biloxi
 Strahan, Jeanette - Lucedale
 Stratakos, Francis P. Jr. - Ocean Springs
 Strickland, Stella J. - Long Beach
 Strickler, Edward W. - Pascagoula
 Strickler, Lila J. - Pascagoula
 Stringfellow, Claude - Mobile, Ala.
 Stringfellow, Donald Jr. - Long Beach
 Strohm, Harry J. - Wiggins
 Suarez, Harry D. - Pensacola, Fla.
 Sullivan, Gail B. - Biloxi
 Sullivan, Ingrid C. - Gulfport
 Sweeney, James R. - Pass Christian
 Switzer, Edward Jr. - Gulfport
 Switzer, Gerald G. - Handsboro
 Switzer, Michael - Handsboro
 Tarrant, Frank J. - Biloxi
 Tatum, Rhoda V. - Wiggins
 Taylor, Charles - Wiggins
 Taylor, Shirley M. - Lucedale
 Teal, Paul - Mobile, Ala.
 Todd, Georgia K. - Lucedale
 Tomasko, Robert S. - Biloxi
 Toncrey, Michael J. - Biloxi
 Tooke, Peggy A. - Biloxi
 Toombs, Carol Rae - Gulfport
 Torjusen, Bobby D. - Gulfport
 Trehern, Wilson D. - Gulfport
 Trochesset, Vincent D. - Biloxi
 Troutman, Lucy A. - Gulfport
 Tucci, Rachel I. (Mrs.) - Biloxi
 Turko, Donald A. - Keesler AFB
 Ulmer, Mary Sue - McComb
 Underwood, Clyde V. - Foley, Ala.
 Upchurch, Jerry T. - Gulfport
 Vassalli, Melanie C. - Bay St. Louis
 Van Bickle, Janet L. - Gulfport
 Verdigets, Cheryl F. - Long Beach
 Vervaeke, Tom Lee - Ocean Springs
 Vester, Marilyn N. - Miss. City
 Viator, Donny P. - Gulfport
 Viator, James R. - Biloxi
 Voivedich, Jimmy C. - Biloxi
 Waddell, Barbara E. - Pascagoula
 Wade, Gussie Mae - Lucedale
 Wade, Robert T. - Agricola
 Waggoner, Janet K. - Biloxi
 Walden, Juanita B. - Ocean Springs
 Waldron, Antonita - Gulfport
 Walker, Palmer S. - Wiggins
 Walker, Ramsay L. - Gulfport
 Walker, Robert H. - Lucedale
 Waitman, Arthur Ray - Ocean Springs
 Waitman, Ralph A. - Lucedale
 Ward, Jacqueline - Biloxi
 Warren, Lee Roy - Handsboro
 Washer, Raymond D. - Biloxi
 Waters, James G. - Mobile, Ala.
 Watters, Walter - Biloxi
 Watts, Sherry A. - Kreole
 Weaver, Jim H. - Gulfport
 Webb, James M. - Wiggins
 Webb, Joseph E. - Gulfport
 Wedworth, James - Long Beach
 Weeks, LeRoy - Moss Point
 Welch, Thomas B. - Gulfport
 Welford, Allen R. - Lucedale
 Welford, Wanda G. - Lucedale
 Westfaul, Edna E. - Moss Point
 White, Oliver B. - New Orleans, La.
 Whitten, Bessie E. - Biloxi
 Wilkins, Trudy A. - Biloxi
 Williams, Loren E. - Gulfport
 Williams, Richard - Biloxi
 Willis, Georgia M. - McHenry
 Wilson, Donald D. - Pascagoula
 Wilson, Robin R. - Biloxi
 Wilson, Ronald K. - Pascagoula
 Wilt, Jack B. - Gulfport
 Winover, Orville Jr. - Baton Rouge, La.
 Winstead, Samuel N. - Ocean Springs
 Wnukowski, Robert C. - Biloxi
 Wyres, Myrtle I. - Long Beach
 Yates, Jerry F. - Lucedale
 Yeager, Shirley - Wiggins
 Zorn, Nicholas E. - Florala, Ala.

Irregular Students

- Albine, Marvin J. - Pascagoula
 Avera, Bonnie K. - Moss Point
 Bachmann, John F. - Keesler AFB
 Bailey, Aubrey T. - Pascagoula
 Balcer, Frank A. - Escatawpa
 Badnar, Stephen R. - Keesler AFB
 Bond, Walter R. - Saucier
 Bosarge, Janice V. - Kreole
 Bowman, Ronald E. - Pascagoula
 Bowers, Wallace R. - Biloxi
 Bowie, Guy W. - Kreole
 Bragg, Edward L. - Moss Point
 Brendlinger, Richard W. - Keesler AFB
 Bright, James P. - Keesler AFB
 Brown, Jo Ann - Pascagoula
 Bryan, Agnes C. - Pascagoula
 Bryant, Thelma W. - Moss Point
 Buckelew, Richard E. - Moss Point
 Budd, Francis J. - Pascagoula
 Burns, Stanley J. - Pascagoula
 Butterfield, Franklin W. - Pascagoula
 Calloway, Nell E. - Pascagoula
 Canfield, Alda R. - Escatawpa
 Canfield, Ann B. - Pascagoula
 Canfield, Irene D. - Moss Point
 Carney, Charles E. - Gulfport
 Cheek, William J. - Pascagoula
 Clark, Rena M. - Moss Point

Cobb, Mary A. - Pascagoula
 Coleman, Joe F. - Pascagoula
 Conn, Lena M. - Pascagoula
 Corley, Ronald W. - Keesler AFB
 Cowan, Genevieve E. - Gulfport
 Cowart, Theo R. - Perkinston
 Cuevas, Thomas G. - Pascagoula
 Davis, James D. - Pascagoula
 Davis, Robert H. - Pascagoula
 Dean, Joyce C. - Pascagoula
 Delaughter, Hilda M. - Natchez
 Delmas, Hudson L. - Pascagoula
 Delmas, Ronald B. - Pascagoula
 DeNicola, Donnie P. - Gulfport
 Dethloff, Glenda M. - Pascagoula
 Dethloff, Jesse L. - Moss Point
 Dethloff, Margie - Moss Point
 Dethloff, O'Grady G. - Pascagoula
 Dickert, Ronald P. - Keesler AFB
 Dirisio, John A. - Keesler AFB
 Doetch, Harold R. - Pascagoula
 Doyle, Joanne - Pascagoula
 Doyle, Paul C. - Pascagoula
 Dryden, Herbert L. - Moss Point
 Dudley, Ralph L. - Pascagoula
 Dugan, William M. Jr. - Moss Point
 Dunston, Edward C. - Pascagoula
 Dupre, Larry D. - Pascagoula
 Easterwood, Mary C. - Moss Point
 Edwards, Mavis O. - Moss Point
 Emerson, Carley G. - Escatawpa
 Fairley, Preston M. - Pascagoula
 Farrell, Marilyn J. - Pascagoula
 Fayard, Larry C. - Biloxi
 Findley, Frances C. - Pascagoula
 Fisher, Julian F. - Pascagoula
 Fiske, George F. - Moss Point
 Ford, Wallace C. - Gulfport
 Fore, Larry C. - Gulfport
 Frederic, Herman G. - Pascagoula
 Fuller, Eleanor M. - Gautier
 Fuller, Nita C. - Gautier
 Gamblin, Judy C. - Moss Point
 Goodwin, Larry R. - Moss Point
 Gordon, John W. - Gulfport
 Gray, Ethel W. - Pascagoula
 Green, Macy E. - Pascagoula
 Green, Leo G. - Pascagoula
 Greenough, Gary A. - Pascagoula
 Greer, Sarah C. - Pascagoula
 Griffin, Roland E. - Moss Point
 Haaf, Joseph B. - Pascagoula
 Hamilton, Johnny W. - Keesler AFB
 Hammons, Virgie M. - Pascagoula
 Hanberry, James C. - Pascagoula
 Hartwig, Bryan H. - Keesler AFB
 Harvey, Charles L. - Moss Point
 Hawkins, Terry L. - Keesler AFB
 Hawks, Larry E. - Pascagoula
 Hawley, Maxine - Biloxi
 Haynes, Theodore A. - Long Beach
 Head, Robert E. - Gulfport
 Healy, Ronald P. - Keesler AFB
 Hicks, Dorothy L. - Pascagoula
 Hiley, Mary K. - Moss Point
 Hill, William K. - Pascagoula
 House, Jack C. - Gulfport
 Howard, Phillip M. - Pascagoula
 Howell, Aubrey E. - Maxie
 Hines, Aldruda E. - Grand Bay, Ala.
 Hoteleu, Robert J. - Pascagoula
 Hughes, Emily B. - Pascagoula
 Hughes, Carroll W. - Pascagoula
 Hulbert, Sandra G. - Escatawpa
 Humphreys, Mary M. - Pascagoula
 Jane, Doris L. - Pascagoula
 Jernigan, Janis I. - Pascagoula
 Johnson, Arlie L. - Biloxi
 Johnson, Hermine J. - Pascagoula
 Johnson, Mary A. - Ocean Springs
 Johnson, Mayon F. - Ocean Springs
 Jones, Linda F. - Pascagoula
 Jones, James L. - Keesler AFB
 Jones, Nita P. - Pascagoula
 Kirpatrick, John R. - Keesler AFB
 Lach, Robert A. - Keesler AFB
 Lawrence, Richard T. - Pascagoula
 Lowery, Robert L. - Biloxi
 Leggett, Charles V. - Pascagoula
 Lewis, Edward A. - Keesler AFB
 Lightsey, Rachel D. - Pascagoula
 Livingston, Joan - Moss Point
 Lott, Curtis M. - Moss Point
 McMaster, David E. - Keesler AFB
 McMillen, Stephen A. - Pascagoula
 Maddox, Mary J. - Pascagoula
 Mandal, Betty R. - Long Beach
 Marshall, Glen - Moss Point
 May, Duncus E. - Moss Point
 Miller, Doris M. - Kreele
 Miller, Louie D. - Kreele
 Miller, Mary B. - Pascagoula
 Miller, Patsy R. - Kreele
 Miller, Toxey A. - Moss Point
 Morano, Joseph A. - Gulfport
 Moore, Henry - Keesler AFB
 Morrison, Dorothy A. - Gulfport
 Mott, Dorothy H. - Pascagoula
 Murphy, Billy W. - Pascagoula
 Nelson, Earl W. - Pascagoula
 Newman, Arleen D. - Pascagoula
 Nobles, Virgie A. - Pascagoula
 Noyes, Roscoe L. - Moss Point
 Oglesbee, Troy F. - Pascagoula
 Phillips, Billy J. - Pascagoula
 Posey, Martha J. - Pascagoula
 Posey, Annie E. - Moss Point
 Presley, Dorothy G. - Long Beach
 Racenet, Jules J. - Keesler AFB
 Ransom, Frank - Pascagoula
 Rasmussen, Thomas H. - Moss Point
 Reynolds, Homer E. - Keesler AFB
 Reynolds, James W. - Biloxi
 Rigby, James G. - Pascagoula
 Roberts, Annie L. - Moss Point
 Roepke, Rodney A. - Keesler AFB
 Rogers, Dorothy E. - Moss Point
 Rogers, Judith M. - Moss Point
 Rogers, Lucille M. - Moss Point
 Ross, Linnie V. - Pascagoula
 Rouse, Shirley A. - Moss Point
 Rowell, Billy E. - Pascagoula
 Runnels, Bobbie J. - Pascagoula
 Salter, Larry K. - Pascagoula
 Sapper, John M. - Keesler AFB
 Saxon, Elizabeth A. - Pascagoula
 Scarbrough, Madeline C. - Gulfport
 Scheeler, Wilma T. - Pascagoula
 Shoemake, Bessie G. - Pascagoula
 Simpson, Yvonne W. - Pascagoula
 Sharp, Charles L. - Pascagoula
 Smith, Anthony J. - Moss Point
 Smith, Eric B. - Pascagoula
 Smith, James E. - Pascagoula
 Smith, Jimmy R. - Pascagoula

Smith, Johnny H. - Pascagoula
 Smith, Lula F. - Moss Point
 Smith, Sara L. - Kreole
 Spruelli, Violet M. - Moss Point
 St. John, Sylvia R. - Pascagoula
 Stokes, Gloria J. - Pascagoula
 Stratton, Robert G. - Pascagoula
 Sudduth, Vernelle G. - Pascagoula
 Suier, Miriam E. - Moss Point
 Switzer, Hilda L. - Kreole
 Sykes, Fawn K. - Pascagoula
 Sykes, Robert C. - Pascagoula
 Taylor, Edward E. - Kreole
 Taylor, Richard - Keesler AFB
 Tolar, Horace C. - Moss Point
 Tombs, Bobby B. - Gulfport
 Trehern, Leo R. - Pascagoula
 Treest, Edna L. - Pascagoula

Trigg, Johnnie - Ocean Springs
 Vanderberg, Lorey - Keesler AFB
 Waddell, Carol F. - Pascagoula
 Waldrop, Bertha D. - Pascagoula
 Walker, Kenneth F. - Pascagoula
 Walker, Linda R. - Pascagoula
 Waugh, Betty B. - Pascagoula
 Weaver, Ida V. - Pascagoula
 Wells, Everett E. - Kreole
 Westfall, Lawrence E. - Moss Point
 Whidden, Allee A. Jr. - Pascagoula
 Witchen, William L. - Pascagoula
 Wolislaire, Mikel T. - Pascagoula
 Wood, Charlotte R. - Moss Point
 Worlop, Ivo - Keesler AFB
 Worsham, Bennie W. - Ocean Springs
 Zambon, Jean A. - Pascagoula

VOCATIONAL PROGRAM

Practical Nurse

Baker, Lorelyn - Gulfport
 Chappell, Lomie - Gulfport
 Devese, Daisy - Gulfport
 Ellis, Jewel - Gulfport
 Farve, Betty - Gulfport
 Fodrin, Billie - Gulfport
 Hawk, Laura D. - Gulfport
 Heiliger, Gena A. - Gulfport
 Hudson, Viola L. - Gulfport
 Hardtner, Mae - Gulfport

Iverson, May L. - Gulfport
 Johnson, Zelma A. - Gulfport
 Kelly, Helen - Gulfport
 Kranz, Lois - Gulfport
 Loposser, Mae - Gulfport
 Sailors, Lois - Gulfport
 Scoper, Bertha - Pass Christian
 Stockman, Thelma - Perkinston
 Williams, Loraine - Gulfport
 Williams, Mary - Gulfport

Auto Mechanics

Arther, H. P. - Gulfport
 Bethel, Robert P. - Mississippi City
 Demont, Shelton - Lucedale
 Fagan, John B. - Hattiesburg
 Gibson, Wiley J. - Pascagoula
 Home, Cecil C. - Hattiesburg
 Johnson, Del Ray - Purvis
 McNeil, George C. - Gulfport
 Norris, Dewey W. - Hattiesburg

Ferry, Richard L. - Ocean Springs
 Robbins, Paul T. - Laurel
 Ryan, John P. - Biloxi
 Simmons, James - McLaughlin
 Sowell, Wilmer L. - Pascagoula
 Valentine, Dan T. - Boso
 Webb, Barlin E. - Vancleave
 Wells, Bobby J. - Ellisville
 Whitman, Vernon - Ocean Springs

NON-CREDIT CLASSES

Ceramics

Cadle, Elizabeth - Perkinston
 Cannon, Genieve - Perkinston
 Cooley, Susie - Perkinston
 Cowser, Faye - Perkinston
 Dedaux, Zettie - Perkinston
 Dees, Mary - Perkinston

Finch, Lillian L. - Perkinston
 Lofton, Alma W. - Long Beach
 McHenry, Dorothy L. - Perkinston
 McInnis, Jananna - Perkinston
 Ward, Howard W. Jr. - Lyman

Art

Blackwell, Kathryn A. - Wiggins
 Cain, Oracie L. - Wiggins
 Dees, Sue - Wiggins

Neely, Shirley - Wiggins
 Regan, Dorothy O. - Wiggins
 Smith, Jean M. - Wiggins

COLLEGE ENROLLMENT SUMMARY

Summer Session 1962

Sophomores	42
Freshmen	53
Irregulars (on campus)	35
Irregulars (Pascagoula)	85
TOTAL	215

Regular Session 1962-63

Sophomores	333
Freshmen	552
Irregular (Perk)	46
irregular (Pascagoula)	156
Irregular (Gulfport)	12
Total	1099

Practical Nurses	20
Auto Mechanics	18
Non-Credit Art	6
Non-Credit Ceramics	9

TOTAL 53

Total for Regular Session 1152

Grand Total for Year 1367

JUNIOR COLLEGE GRADUATES

1926-27	1	1938-39	54	1950-51	64
1927-28	10	1939-40	85	1951-52	56
1928-29	19	1940-41	87	1952-53	65
1929-30	16	1941-42	42	1953-54	79
1930-31	12	1942-43	46	1954-55	88
1931-32	43	1943-44	19	1955-56	88
1932-33	34	1944-45	27	1956-57	89
1933-34	46	1945-46	22	1957-58	85
1934-35	52	1946-47	59	1958-59	90
1935-36	60	1947-48	98	1959-60	97
1936-37	68	1948-49	78	1960-61	86
1937-38	46	1949-50	82	1961-62	162

TOTAL 2155

INDEX

A

Absences	26-27
Academic Regulations	22
Accounting	39-41
Accreditation	17-18
Activities, Student	86-89
Administrative Offices	7
Admission	
Procedure	24-25
Requirements	22
Advisors	27-28
Agriculture	54-55
Anatomy	69
Art	54
Assembly	29
Awards	32

B

Band	68-69, 88
Bible	59
Biology	69
Buildings	19-21
Business	
Courses in	55-56
Curriculum	41

C

Calendar	1-4
Campus	19-21
Chemistry	70
Choir	68-69, 88
Clothing and Textiles	62-63
Commerce and Industry	55-57
Conduct, Student	88-89
Counseling	27-28
Courses	
Description of	54-77
Numbering of	34

D

Debate	58
Degrees, Requirements for	33
Dormitories	20-21
Drafting	51, 74

E

Economics	71
Education and Psychology	48, 60
Electronics	52, 75
Employment, Student	84-85
Engineering Curriculum	45
English and Literature	57-59
Enrollment Procedures	24
Evening College	80
Examinations	30-31
Expenses	78-79

F

Faculty	9-13
Faculty Committees	8
Fees	79-82
Foods and Nutrition	62-63
Foreign Languages	61

G

Government	71
Grading System	29-30
Graduation Requirements	33-34
Guidance	27-28

H

Health	61
Health Services	21, 79
History	71
Home Economics	43, 62-63
Honor Roll	31
Honors	31

I

Industrial Arts	51-52, 64-65
Insurance, Student	80
Irregular Students	25, 80

J

Jobs, Self-Help	84
Journalism	58

L

Library	19, 21
Living Accomodations	19-21, 79-80
Load, Academic	25, 80
Location	19

M

Mathematics	65-66
Music	44, 67-69

N

Nursing	49-50, 63-64, 77
---------------	------------------

O

Objectives	14-18
Organizations	86-88
Orientation	27
Out-of-State Enrollment	23

P

Phi Theta Kappa	87
Physical Education	61
Physical Examination	24
Physics	70
Probation and Suspension	26
Programs of Study	35-53
Psychology	60

Q

Quality Points	31
----------------------	----

R

Reading, Development Center	58
Recreation	86-88
Refund Policies	82
Registration	
Changes in	82
Late	81
Religious Activities	88
Reports	29

S

Scholarships and Loans	84-85
Scholastic Requirements	22
Secretarial Training	40-42
Sociology	71
Special Students	25
Speech	58
Staff Members	7
Student Council	86-87
Student Publications	87
Summer School	4
Supervisors, Boards of	5

T

Transcripts	81
Trustees, Board of	6

W

Withdrawal Procedures	26
-----------------------------	----