

BULLETIN

Perkinston
JUNIOR COLLEGE

Perkinston, Mississippi



CATALOGUE 1946-47

ANNOUNCEMENT 1947-48

Session Begins Monday, September 8, 1947

Volume 21

Number 1



A View of the Campus



Lobby Harrison Hall



A Boys Room in Freshman Dormitory



Biology Laboratory

BULLETIN

Perkinston Junior College

Perkinston, Mississippi

CATALOGUE 1946-47

ANNOUNCEMENT 1947-48

Session Begins Monday, September 8, 1947

Volume 21

Number 1

CONTENTS

	Page No.
School Calendar	3
Board Calendar	4
Boards of Supervisors	5
Board of Trustees	6
Officers of Administration	7
Standing Faculty Committees	8
Faculty	10
 General Information	 13
Purpose	13
Performance	13
Affiliations	15
Historical	15
Buildings and Equipment	16
Library	17
School Farm	17
Student Organizations	19
Dancing	21
Physical Education and Athletics	21
Moral and Religious	21
Health Service	22
Discipline and Regulations	22
Demerit System	24
Medals and Awards	24
Expenses	25
Housing Accomodations	27
Student Labor	28
Articles Student Should Bring	28
How to Register	29
How to Withdraw	30
Summer Session, 1948	30
 General Academic Regulations	 31
General Regulations as to Grading, Student Load, Classification, etc	31
Absences	32
Grading System	33
Examinations	34
Honor Roll	35
 High School Division	 37
Entrance Requirements	37
Graduation Requirements	37
Program of Studies	37

SCHOOL CALENDAR, 1947-48

Friday, September 5, 8:30 A. M. Registration of local high school students.

Saturday, September 6, 2:00 P. M.—Faculty meeting.

Sunday, September 7—Dining hall opens.

Monday, September 8, 8:30 A. M.—Registration of dormitory high school students.

10:00 A. M.—Administration of Vocational inventory tests to freshmen college students. All freshmen are to assemble in the college library promptly at 10:00 A. M.

2:00 P. M.—Registration of college sophomores.

All college sophomores are to assemble in the college auditorium promptly at 2:00 P. M.

8:00 P. M. party, all students in Gymnasium.

Tuesday, September 9, 8:00 A. M.—General assembly in college auditorium.

9:00 A. M.—Registration of college freshmen.

8:00 P. M.—Formal reception in Harrison Hall.

Wednesday, September 10—Classes begin.

Friday, October 11—First term ends.

Saturday, October 18—No classes.

Sunday, January 25—Second semester begins.

Wednesday, November 26, 3:30 P. M. to Sunday, November 30, 10:00 P. M.—Thanksgiving holidays.

Saturday, December 20, 3:30 P. M. to Sunday, January 4, 10:00 P. M.—Christmas holidays.

Saturday, January 24—First semester ends.

Sunday, January 26—Second semester begins.

Monday, January 26—Registration second semester.

Saturday, March 6—Fourth term ends.

Wednesday, March 17, 3:30 P. M., to Sunday, March 21, 10:00 P. M.—Spring holidays.

Friday, April 16—Fifth term ends.

Sunday, May 23—Commencement sermon.

Wednesday, May 26—Graduation exercises.

SUMMER 1948

June 2—Registration.

July 7—End of first term.

August 12—End of second term and ten-week session.

August 28—End of thirteen-week session.

A fee of \$2.00 will be charged to all students who do not report for classification on scheduled time.

Junior College Division	39
Preliminary Statement	39
Entrance Requirements	39
Graduation Requirements	39
Quality Point System	40
Special Students	41
Irregular Students	41
Course Numbers	41
Program of College Studies	43
General Group	44
Agriculture Group	44
Business Education Group	46
Home Economics Group	47
Music Group	48
Pre-Engineering Group	49
Science Group	50
Teacher Training Group	51
Pre-Nursing Group	52
Trades and Industrial Group	52
Description of Courses	55
Agriculture	55
Bible	56
Business Education	56
Education	59
English	59
Home Economics	60
Library Science	61
Mathematics	61
Music	63
Physical Education	66
Romance Languages	67
Science	68
Social Studies	70
Trades and Industry	71
Graduates of Regular Session, 1945-46	75
Graduates of Summer Session, 1946	77
Roster of Students, Summer Session, 1946	81
Roster of Students, Regular Session, 1946-47	86
Schedule Regular Session, First Semester, 1947-48.....	99, 100, 101
Schedule Regular Session, Second Semester, 1947-48	103, 104, 105
Application for Admission	107

PERKINSTON JUNIOR COLLEGE
BOARD AND TUITION CALENDAR 1947-48

Room is reserved on payment of \$10.00 matriculation fee.
Board and tuition are payable by the month in advance.

First month's board and tuition due:
Monday, September 8

Second month's board and tuition due:
Monday, October 6

Third month's board and tuition due:
Monday, November 3

Fourth month's board and tuition due:
Monday, December 1

Fifth month's board and tuition due:
Monday, January 12

Sixth month's board and tuition due:
Monday, February 9

Seventh month's board and tuition due:
Monday, March 8

Eighth month's board and tuition due:
Monday, April 5

Ninth month's board and tuition due:
Monday, May 3

BOARDS OF SUPERVISORS

Harrison County

W. M. Ladnier, President	Saucier
Hugh Fitzpatrick	Pass Christian
O. F. Cassibry	Gulfport
Dewey Lawrence	Biloxi
W. Luther Blackledge	Saucier
C. J. Darby, Clerk	Gulfport

Stone County

E. R. Smith, President	Wiggins
C. E. Dees, Sr.	Perkinston
E. R. Bond	Rt. 1, Perkinston
Otis M. Bond	Rt. 1, Perkinston
O. B. Brown	Rt. 2, Perkinston
Hollie T. Bond, Clerk	Wiggins

Jackson County

K. W. Burnham, President	Moss Point
Hermes Gautier	Pascagoula
Roy Cumbest	Rt. 2, Pascagoula
Fred Moran	Ocean Springs
George Cruthirds	R. F. D. Biloxi
Fred Taylor, Clerk	Pascagoula

George County

W. J. Parker, President	Lucedale
E. G. Yonge	Lucedale
N. W. Fairley	Lucedale
W. T. Moody	Lucedale
J. H. Whittington	Rt. 1, Perkinston
M. L. Malone, Clerk	Lucedale

BOARD OF TRUSTEES

Harrison County

Wm. V. Robinson	Pass Christian
C. S. Wentzell	Biloxi
J. H. Richards	Saucier
W. H. Caraway	Gulfport
R. J. Moran	Lyman
O. L. Ladnier, Co. Supt., Vice President	Gulfport

Stone County

C. E. Dees, Jr.	Perkinston
B. A. Lott	Wiggins
S. A. Blackwell	Perkinston
D. E. Smith	Perkinston
P. A. Batson	Wiggins
D. D. O'Neal, Co. Supt., Secretary	Wiggins

Jackson County

H. P. Heidelberg, President	Pascagoula
M. B. Cumbest	Pascagoula
Norman V. Flurry	Perkinston
E. V. Suthoff	Moss Point
Mrs. C. M. Carr	Ocean Springs
A. F. Megehee, Supt.	Pascagoula

George County

M. L. Malone	Lucedale
M. A. Eubanks, Supt.	Lucedale
M. L. Pope	Lucedale
K. G. Brown	Agricola
C. A. Holland	Rt. 3, Lucedale
Florian Maples	Rt. A, Perkinston

OFFICERS OF THE ADMINISTRATION

A. L. May	President
R. F. Rivers	Registrar
L. A. Blackwell	Dean of Men
Mrs. Julia B. Slay	Dean of Women
Mrs. Betty Faucette	Librarian
James R. Davis	Business Manager
Miss Jimmie McBay	Office Assistant
Miss Mildred Rustin	Office Assistant
Mrs. George Westerfield	Nurse
Miss Elma Smith	Dietician

STANDING FACULTY COMMITTEES**DISCIPLINE COMMITTEE:**

Pres., A. L. May
 Mr. R. F. Rivers
 Mr. L. A. Blackwell
 M. R. Campbell
 Mrs. Julia B. Slay
 Mr. J. O. Ware, Jr.

All rules and regulations governing life on the campus are subject to faculty approval and all members of the faculty are responsible for discipline. The Discipline Committee, however, will act as a final court for the disposition of all cases involving punitive measures.

PERSONNEL COMMITTEE:

Pres., A. L. May
 Mr. R. F. Rivers
 Mr. L. A. Blackwell
 Mrs. Julia B. Slay
 Miss Francis Harrell
 Miss Jananna McInnis
 Mr. Joe Stroud
 Mr. K. P. Faust
 Mr. John A. Patten

It will be the function of this committee to give students special help in the matter of selecting their college courses to suit their later needs. The committee will advise with students from time to time as to their college needs and life needs. It will give advice and counsel to students in selecting a senior institution after their graduation here.

DRESS COMMITTEE:

Add Lea Morgan
 Julia Slay
 Jananna McInnis
 L. A. Blackwell
 J. O. Ware

HEALTH SERVICE COMMITTEE:

Add Lea Morgan
 Mr. George Westerfield
 Mrs. George Westerfield
 M. R. Campbell

The function of this committee is to supervise physical examinations, keep records of the students' personal health, and have general supervision of the health program.

MEMORIAL CHAPEL FUND COMMITTEE:

Mr. W. G. Gregory, Chairman

Christian Council:

Mr. A. L. May
 Miss Frances Harrell
 Mr. Joe Stroud
 Miss Reba Moffett
 Mr. Verlon Byrd
 Mr. Leon Bolen, Jr.
 Alumni Officers.
 Miss Clara Sekul, President
 Mr. Otis Singletary Vice-President
 Miss Mildren Rustin, Secretary

The function of this committee is to raise funds for the erection of an interdenominational chapel on the college campus as a memorial to the Perkinston Junior College alumni in the armed services

FACULTY

- A. L. May—B. S., M. A., George Peabody College; Specialist Diploma, Teachers' College, Columbia University—President. Perkinson Junior College since August, 1941.
- Leonard A. Blackwell—B. S., Mississippi Southern College—Dean of Men and Social Studies. Perkinson Junior College since June, 1946.
- Milton D. Blakney—B. S., Mississippi State College in the School of Vocational Agriculture, 1942—Vocational Agriculture. Perkinson Junior College since June, 1946.
- William Carroll Fulgham—B. S., Millsaps College—Bible Four summer terms in Leadership School, Lake Junaluska, N. C.—Bible. Perkinson since October, 1945.
- James V. Gammage—B. S., Mississippi State College, 1927; M. S., Louisiana State University, 1932—Agriculture. Perkinson Junior College since June, 1946.
- K. P. Faust—B. S., Millsaps College; three years University of Tennessee Medical School; two years University of Mississippi—Chemistry. Perkinson Junior College since September, 1943.
- Grayson, E. L.—Two years special training in Radio Mechanics. Radio Mechanics. Perkinson since 1947.
- Marvin R. Campbell—B. S., Mississippi State College—Head Coach, Social Studies. Perkinson Junior College since July, 1947.
- Elaine Canady—B. M., Louisiana Polytechnic Institute; M. M. E., Louisiana State University, Piano. Perkinson Junior College since 1946.
- Susie Cooley—B. A., Mississippi State College for Women; M. A., George Peabody College. Work at Paris, France and Guadalajara, Mexico. English Perkinson Junior College since 1944.
- Al Court—B. A., University of Chicago; M. A., Leland Stanford University; Social Studies. Perkinson Junior College since 1946.

- Crowe, Hazle—B. A., M. A., Mississippi College—English. Perkinson since 1947.
- Beulah May Delano—B. S., Mississippi State College for Women: Special course at George Peabody College and Tulane University; Graduate work at University of Alabama—Biology. Perkinson Junior College since 1946.
- Mrs. John Faucette—B. A., University of Tennessee; B. A., in France; University of California (U. C. L. A.). Librarian. Perkinson Junior College since 1946.
- Ms. Etta Frantzen—B. A., University of Mississippi—Chemistry. Perkinson Junior College since September, 1946.
- W. G. Gregory—B. A., Bethel College; M. A., George Peabody College; seven summers toward Ph. D., George Peabody College—Mathematics. Perkinson Junior College since July, 1926.
- Mrs. W. G. Gregory—B. A., Shorter College; graduate of Georgia-Carolina Commercial College; B. A. (Business Administration), B. S. (Accounting), Bowling Green Business University; M. A., George Peabody College—Commerce. Perkinson Junior College since September, 1928.
- Walter Franklin Haley—B. A., Bowling Green Business University; Graduate Work, Bowling Green Business University—Commerce. Perkinson Junior College since December, 1946.
- Miss Frances Harrell—B. S., Mississippi Southern College; M. A., George Peabody College; one summer Tulane University—English. Perkinson Junior College since June, 1944.
- Ina Sager Hill—B. M., Schenandoah Conservatory of Music; Graduate Training, Columbia School of Music; Studied with Warsaw Reinald Werranrath and Yvan Servais—Voice, Violin. Perkinson Junior College since September, 1947.
- Otis Jones—B. A., Mississippi College; Th. M., Southwestern Seminary; Th. D., N. O. Baptist Seminary. Graduate work at University of Colorado—Bible. Perkinson Junior College since 1946.
- Miss Jananna McInnis—B. S., Mississippi State College for Women; one and one-half years' graduate work Mississippi

pi State College and University of Alabama—Home Economics. Perkinson Junior College since January, 1946.

Josephine Add Lea Morgan—A. B., Greensboro College; M. A., George Peabody College—Physical Education for Women. Perkinson Junior College since 1946.

A. R. Nye—B. S., Texas A. & M. Graduate work at Texas A. & M.—Auto Mechanics and Mechanical Drawing. Perkinson Junior College since 1946.

George R. Paravis—B. S., State Teacher's College, Kutztown, Pa. Work on Masters degree at Lehigh University—Chemistry and Physics. Perkinson Junior College since 1946.

John A. Patten—A. B., Berea College; M. S., University of Kentucky—Biology. Perkinson Junior College since 1946.

R. F. Rivers—B. S., Mississippi Southern College; M. A., University of Mississippi; one summer at University of Chicago and one year at Louisiana State University toward Ph. D.—Social Studies. Perkinson Junior College since September, 1941.

W. D. Smith—B. S., Mississippi State College; Corinth Business College; two summers, University of North Carolina; two years graduate study, Vanderbilt University and George Peabody College—Wood Manufacturing. Perkinson Junior College since January, 1943.

Eloise Walker—B. A., Mississippi Woman's College—Mathematics. Perkinson Junior College since September, 1945.

James Orion Ware, Jr.—B. S., Mississippi Southern College, 1940; Special study, Louisiana State University—Band. Perkinson Junior College since June, 1946.

Stroud, Joe—B. S., Mississippi Southern College. All requirements for M. A., except thesis, University of Mississippi. Education and Psychology. Perkinson Junior College since 1944.

Monroe O. Webb—A. B., Northwestern State College, Louisiana; Graduate Training, Louisiana State University—Agriculture. Perkinson Junior College since July, 1947.

George B. Westerfield—B. S., Mississippi Southern College. Director of Athletics and Physical Education. Perkinson Junior College since 1942.

GENERAL INFORMATION

PURPOSE

The Perkinson Junior College includes two years of high school work and two years of college work. It is located on a hard-surfaced road 30 miles from the Mississippi Gulf Coast in the heart of the cut-over pine belt section of Mississippi. The population is somewhat cosmopolitan, but relatively stable. The economic life of our people is based principally upon the seafood industry, tourist trade, agriculture, forestry, and some related commerce and industry.

The general purpose of this Junior College is to develop the cultural, intellectual, and character resources of the people and point the way to an economic livelihood based on natural resources.

Our more specific aims include: (a) to provide general education for the students, (b) to provide education for employment when leaving junior college, (c) to provide opportunities at low cost, (d) to provide preparation for further college work, (e) to provide guidance: personal, educational, and vocational, (f) to provide a wide variety of departments and activities.

PERFORMANCE

Performance—not theory—is the safest measures of effectiveness in public institutions. The ability to adjust programs to an emergency or needs, is the most reliable test of a college. Perkinson Junior College rests its case upon its actual performance through the adjustment of its program to meet the problems confronting young men and young women in this post war period.

Adjustment and Expansion.—How well the adjusted program of the institution has functioned in meeting the needs of the students and communities is evidenced by the following:

1. A curriculum of expanded offerings with a highly trained faculty is provided to give courses in general educa-

tion, pre-professional, university parallel courses, as well as terminal courses.

2. Acceleration.—The Junior College remains on a twelve months basis in order to enable veterans to proceed with their education at the maximum acceleration, as well as provide the opportunities for other high school and college students to accelerate their program of training.

3. Plant Adjustment. (a) During recent years the Junior College has expanded its physical plant by providing a shop building fully equipped to teach Wood Manufacturing, Sheet Metal, Auto Mechanics and Radio Mechanics.

(b) A canning plant for canning farm produce for the college and community has been constructed. It is used also as a laboratory for the Agriculture and Home Economics classes. The commercial department has been expanded with the addition of modern mechanics for teaching purposes.

(c) An apartment dormitory has been constructed for housing veterans and their wives and another dormitory for housing veterans will be ready for occupancy for the opening of session 1947-48.

(d) A new cafeteria and class room building, as well as, an infirmary building, will also be ready for occupancy for fall session.

(e) A trailer city has been constructed in conjunction with Federal Public Housing Authorities to provide housing for veterans and their families.

4. Special courses have been set up for Veterans. Veterans who have not finished high school are permitted to take refresher courses to equip them for college. Also full-time vocational courses are offered for students who do not meet regular entrance requirements, but who wish to prepare themselves for a trade.

5. Community Center.—With the establishment of the shop and a canning plant, the junior college is becoming more of a community center. The facilities of the shop, including woodworking and other various types of mechanics, are available to farmers and others throughout the area who desire to make use of them. The canning plant is open at any time throughout the year to farmers and others who desire to can fruit, vegetables and meats. Of course, those receiving these

services will furnish their materials and labor. The college will furnish supervision. Farm agencies and student groups hold occasional conferences on the campus. The band, glee club, orchestra, and other student groups give programs at different places in the Junior college area. Special programs including dramatics, music, and lectures are scheduled each year and high school students and adults of the area are invited to attend.

AFFILIATIONS

The Junior College is accredited both by the State Accrediting Commission and the Southern Association of Colleges and Secondary Schools. This means that students transferring to other institutions will receive full recognition for credit earned here provided courses taken are in line with higher courses to be pursued later.

The college holds membership in the Association of Mississippi Colleges and the American Association of Junior Colleges.

HISTORICAL

In the summer of 1911 the Harrison County School Board established the Harrison County Agricultural High School, which marked the beginning of the present institution. At that time Stone County was a part of Harrison County. In order to induce the County School Board to locate the school at Perkinston, C. C. Sweatman, Walt Davis, Rev. R. N. Davis, W. W. Farnsworth, Van O'Neal, T. T. Garner, E. Garner, Dantzler Lumber Company, and a number of other citizens donated 656 acres of land and \$626 in money.

On September 12, 1912, the school opened its doors with Mr. J. A. Huff as Superintendent. The first year forty-one boys and twenty-one girls were enrolled. At that time sub-freshman high school work, or eighth grade work, was done in connection with the high school.

The first group of buildings consisted of the present Dormitory No. 1 for boys with a kitchen and dining hall annex, the present Dormitory No. 2 for girls, and the present science building known then as the administration building. The number of buildings has increased to 14 at present time.

On May 8, 1916, Stone County was formed from the Northern part of Harrison County, and the two counties continued to operate the school jointly. In the summer of 1926, the Jackson County School Board voted to join Harrison and Stone Counties in the operation of the Junior College, and the Board of Supervisors of Jackson County made a small levy for the benefit of the school in the fall of 1926. Since that time Jackson County has raised its levy. The three counties operated the school jointly until the fall of 1941. At that time George County's School Board voted to join Harrison, Stone and Jackson Counties in the operation of the Junior College; and the Board of Supervisors of George County made a levy of one mill for the support of the school.

The Board of Trustees in April, 1942, recommended to the Board of Supervisors in a resolution that the name of the institution be changed from Harrison-Stone-Jackson Agricultural High School and Junior College to Perkinson Junior College. This change became effective by resolutions of the Boards of Supervisors approving the recommendation of the Board of Trustees on July 15, 1942.

Junior College work was offered for the first time beginning with the session 1925-26. That year the school enrolled 194 high school students and 25 freshmen college students. Since that time the enrollment has grown, and a wide variety of courses and activities have been added.

BUILDINGS AND EQUIPMENT

Perkinson Junior College is equipped with buildings, laboratories, and facilities to do high-type work and accommodate approximately five hundred students. The principal buildings are an administration building with class rooms, offices and auditorium; science building with adequate laboratory space, museum, the library, home economics practice house and class rooms; a gymnasium including a field house and store rooms; trades building for auto mechanics, wood manufacturing, sheet metal, general shop and radio mechanics; four boys' dormitories, one girls' dormitory, a teachers' dormitory with upstairs used for boys, an apartment dormitory for married veterans and faculty members, a trailer city including twenty-five trailers for married veterans, a cafeteria and class room building and infirmary including a little theatre, president's home, four homes for instructors, a power house, Y. M. C. A. building, laundry building, canning building, dairy with necessary barns and garages.

It is the intention of the Board of Trustees and college administration to make the campus an inviting place to live. The campus has been landscaped by the farm department.

The chemistry, biology, physics, agriculture, home economics, and commercial departments are equipped with adequate laboratory facilities to do high-class work. The laboratories are student work-shops; it is, therefore, the intention of the administration to keep them well supplied and maintained.

The trades building is well equipped to offer courses in wood manufacturing, sheet metal, auto mechanics, general shop and radio mechanics. Many students are taking advantage of these courses on the high school or college level and also many veterans are taking these courses on a full-time basis.

LIBRARY

The Library is an important work room for college and high school students, and is the laboratory of the library science classes. Its atmosphere of quiet and relaxation is conducive to study, reference work, or pleasure reading. It occupies 3823 square feet and is furnished with adequate chairs, tables, and bulletin boards. The collection numbers between six and seven thousand volumes, well selected and classified. Bound periodicals supplement the reference books, and students have access to the magazine room of old numbers as yet unbound. Nearly eighty magazines, several newspapers, and World News of the Week furnish generous opportunity for readers to keep informed and entertained.

The privilege of the library are extended to all students of the school. Those who keep books overtime or lose them are charged cost fees, which must be paid before students are eligible for tests or examinations.

SCHOOL FARM

The school owns 750 acres of land, 101 acres of which are devoted to food and feed crops, 350 are fenced grazing pasture, seeded in Carpet and Bermuda grass, with common Lespedeza, and fifty acres are devoted to improved pasture. This improved pasture was treated with one ton of agriculture lime per acre and 400 pounds of superphosphate. It was given a basic seeding with ten pounds of a mixture of Hop, Persian

and White Dutch clovers, and ten pounds of Dallas grass per acre. Over 200 acres are idle land with some timber growing on it; forty acres are planted with young pine and a forest demonstration; and thirty-five acres are devoted to the campus and playgrounds.

The aims of the farm department are: (1) to serve as a demonstration for farmers and timber growers of this section and to carry out demonstrations in connection with Mississippi State College and the Experiment Station, (2) to serve as a laboratory in connection with classes in the agriculture department, (3) to supply the college dining hall with vegetables and other produce, (4) to provide part-time work for worthy students seeking an agricultural education.

The farm owns forty-five head of Jersey cattle, which furnishes the college with milk. A high type Jersey bull with a butter fat record of 646 pounds is kept for breeding to the dairy stock. It is the aim of this department to build up milk production per cow by the use of this bull.

The farm owns a registered Devon bull and six registered Devon heifers which are serving as a nucleus of a growing registered beef herd. It is the aim of this department to furnish the college with beef and to sell some registered Devon breeding stock. Some crossing of Devon with Jersey is being done as an experiment and as a source of meat supply.

Two purebred Duroc Jersey sows and a boar are kept to produce pigs for pork for the dining hall. Twenty to twenty-five hogs are butchered annually, furnishing three to four thousand pounds of pork.

The farm produces two to three thousand bales of hay, some oats and corn for livestock feed and ten to fifteen acres of food crops such as sweet potatoes, irish potatoes, beans, peas, turnips, okra, etc. for use in the dining hall.

A well equipped canning plant is used by the college to can farm produce for the college dining hall. This canning plant was built as a community project and citizens are welcome to use its facilities to can their produce. In addition to the above the plant is used in connection with agriculture as a teaching device.

The policy of the farm is to develop the department along a practical farm program adaptable to this section of Mississippi. The equipment is not beyond the means of the average farmer in this area.

STUDENT ORGANIZATIONS

The faculty believes that training in organized groups is essential in preparation for citizenship; and therefore fosters student organizations whose objects are to promote spiritual, social, and literary ends.

The Student Council is the first and most inclusive organization and is representative of all the students. The Council consists of President, Vice-President, Secretary-Treasurer, and six Council members. These officers are elected by the students at large and come from the various division of the school as follows: President, Vice-President, and Secretary-Treasurer from the sophomore class; three Council members from the sophomore college division; two from the freshman college division; one from the high school division.

The function of the Student Council is to plan wholesome and entertaining recreational and social activities for the students, hold student discussions and present helpful student suggestions to the faculty and administration, and act in an advisory capacity to students. The Council sponsors formal dinners, dances, and other student activities. Four faculty members are selected to serve as sponsors.

Phi Theta Kappa is a national junior college honorary society whose aim is to promote scholarship, leadership, and fellowship. Membership is limited to those students ranking in the upper ten per cent in general scholarship.

The International Relations Club is affiliated with similar college clubs throughout the country and aims to promote a better understanding of international relationships. Membership is by invitation. Young men and women who have an interest in this work and who have a good scholastic record are eligible. This club has periodical discussions and occasionally has an outstanding guest speaker.

Future Teachers of America, Chapter Number Two in Mississippi, is a local unit of the national organization of Future Teachers. It has for its purpose the development of prospective teachers for the public schools of our nation and state. Future teachers pledge themselves to maintain physical vigor, mental vitality, moral discrimination, wholesome personality, helpfulness, knowledge and leadership.

The Language Club is composed of students who take a foreign language, and who are interested in promoting language study.

The Home Economics Club is composed of women who take home economics and who have special interest in this subject. The club holds periodic business meetings and sponsors style shows, teas, dinners, and other social functions.

The Dramatic Club is organized and carried on by the students who care to receive training and practice in public speaking, dramatics, and debating.

The Y. W. C. A. and the Y. M. C. A. do much in promoting the spiritual development of the students. A large number of students participate in the activities of these clubs. Attendance at state and south-wide conferences benefits the individual, as well as the school, and does much toward broadening the student's outlook upon life.

The Baptist Student Union, the Newman Club, the Episcopal Club, the Presbyterian Club, and the Wesley Foundation are active organizations composed of students of the different church denominations.

The Christian Council, made up of representatives of the various religious organizations, has charge of Vesper Services on the campus the first Sunday evening of each month.

The band, orchestra, and glee club are active organizations and furnish entertainment for the student body, as well as providing splendid training for its members.

The "P" club is composed of those boys who have made letters in any of the college athletics. It fosters clean sportsmanship and student cooperation with the athletic teams.

The Athletic Board sponsors the girls' intramural program.

The Camera Club has as its purpose the teaching of the principles of photography. Here the students have an opportunity to put into practice the theory they have learned by actually developing and printing pictures they have made.

The Gershwin Club is a musical organization. Membership is open to all students of the band, orchestra, glee club and to any other students studying music. Its purpose is to furnish monthly programs for its members in an endeavor to further the appreciation for good music. Affiliated with Mississippi Federation of Music Clubs.

All of the classes have strong central organizations and they, with their sponsors chosen from the faculty, contribute much to student life.

DANCES

By permission of the Board of Trustees, occasional student dances are conducted under faculty supervision. According to agreement, only bona fide students, their parents, and faculty members are admitted to these dances.

PHYSICAL EDUCATION AND ATHLETICS

The faculty believes that every normal student should participate in some form of athletics or physical recreation. There are organized classes in physical education in which students receive non-academic credit; and teams in football, basketball, track, boxing, tennis and baseball are maintained.

The school engages in a very intensive program of intramurals. Every boy and every girl, unless physically handicapped, engages in the different sports during the session. These sports include touch football, basket ball, volley ball, softball, and other types of activities.

The school has re-directed its physical education activities to give more thorough training, and for all of the students instead of just a few.

The school is equipped with a splendid gymnasium, two field houses, two concrete tennis courts, a football field, a baseball diamond, a large playground, and a track field.

The school owns two large comfortable buses for transporting its athletic teams, band, glee club, and other groups.

MORAL AND RELIGIOUS

We believe that no man or woman is truly educated who does not have good moral habits, a sense of right and wrong, and a spiritual outlook on life. Students are, therefore, encouraged to participate in various Christian activities.

Students are encouraged, but not required, to attend Sunday School and church at the local church located one block from the campus.

HEALTH SERVICE

All students are required to bring a certificate from health authorities or from a doctor indicating the results of a Wasserman test or other blood test. Students will also bring a doctor's certificate of typhoid fever immunization and small pox vaccination. A health certificate, to be valid, must show the date of the Wasserman or other blood test, the typhoid immunization, and the small pox vaccination. There will be no exceptions to these requirements. These certificates must be presented on entrance.

Certain medical attention is given each dormitory student, if sick on the campus, without extra expense to the student. If the student is sick and remains on the campus more than a week, doctor's bills and medicine bills will be charged to the student. In no case will the school be responsible for more than \$15.00 expense per semester per student. The school is not responsible for dental bills or any medical service performed off the campus or by doctors not summoned by school authorities. The school employs a full-time trained nurse to look after students who may be ill.

DISCIPLINE AND REGULATIONS

The faculty expects every student to conduct himself or herself as a gentleman or lady. Our purpose is to get right conduct as a result of right thinking. Experience has taught us that it is necessary to observe certain regular ways of doing things to avoid confusion and promote a wholesome student environment.

Every faculty member is responsible for discipline and is expected to participate in formulating disciplinary policies. The Discipline Committee of the faculty, however, will execute major disciplinary measures. This committee has general supervision of, and final authority in, all questions of discipline.

In order that students, parents, and instructors may understand what is expected of students, we explain below the general and more important regulations.

Other specific regulations are listed in the Student Handbook, a copy of which is provided each student on entering.

Drinking, gambling, cheating on examinations, and stealing will be causes for dismissal from school.

Faculty chaperones are provided on all occasions when student groups participate. The only exception to this rule is Sunday mornings, at which time students may attend Sunday School and church in groups without faculty chaperones.

Students are urged to attend church and Sunday School or Mass each Sunday, but are not required to do so. Students who do not attend these services are expected to be in their rooms during Sunday School and church hours. No loitering on the campus or playgrounds will be permitted at this time.

Neither boys nor girls will be expected to leave the campus at any time without permission from the proper dean or the president. In emergency cases, permission to leave the campus will be granted by faculty members.

All students are permitted to go home without permission on stated holidays. At other times all girls and high school boys who wish to go home will be expected to have written permission sent by their parents direct to the proper dean, who may then permit the students to go home.

Students are urged not to go home too frequently. School authorities reserve the right to deny at any time the privilege of going home when it is felt that visits are interfering with school work or school discipline.

Girls may be permitted to leave the campus with immediate relatives without advance written notice. Parents who wish to permit them to leave for home with people other than relatives must write in advance direct to the dean of women or to the president.

Girls will be permitted to visit friends off the campus by written permission from the girls' parents sent direct to the dean of women or the president and also an invitation from the parents of the girls to be visited. The right to deny the privilege of visiting is reserved by the college authorities, when, in the opinion of the authorities, it is not best for the student or when it in any way affects the discipline of the school.

Students will not be permitted to have candles or lamps in their rooms.

Students are required to keep their rooms locked and keys in their possession.

Students will be expected to observe study hours strictly.

Dormitory students 20 years and older may be allowed the use of automobiles, but the use will be restricted.

Town students are obviously not under all these regulations, but their conduct at all times must be acceptable to school authorities.

The faculty reserves the right to change any of these rules, if, in its opinion, a change becomes necessary.

DEMERIT SYSTEM

Discipline in Perkinston Junior College is enforced by the demerit system which works as follows: For infraction of the regulations or for misconduct, demerits are marked against the student. Any student receiving as many as fifty demerits in any one semester is compelled to withdraw from school. Any student who has demerits may, by good conduct over a period of six weeks, earn ten merits to be subtracted from his demerits.

In addition to this, penalty hours may be assessed for certain room and dormitory regulations.

MEDALS AND AWARDS

Gold medals will be awarded to the high school girl and to the college girl giving the best readings.

A gold medal will be awarded to the boy giving the best oration: 50 per cent grade on manuscript and 50 per cent on delivery. Open to College student only.

Gold medals will be given to the best all-round boy and girl athletes. (Open to high school and college students.)

A gold medal will be given to piano student making the most advancement.

Gold medals will be awarded to the boy and girl who perform most satisfactory work assigned them for self support by authorities.

A gold medal will be awarded the college student majoring in agriculture who has the highest scholastic average.

The A. J. Price Memorial Medal will be awarded to the student who is voted to have practiced most effectively the Golden Rule during the year.

EXPENSES

Matriculation Fee: A matriculation of \$10.00 per school year will be charged all students. The payment of this fee in advance secures a room reservation. All students are admitted free of cost to all athletic events and other activities on the campus. Students who pay this fee are entitled to the student year book, *The Perkulator*, at reduced cost.

Room and Board: Room and board cost students \$27.50 per month, (4 weeks), payable in advance each school month. (See Board Calendar, Page —). The \$27.50 pays for table board; room furnished with steam heat, electric lights, and running water; and medical attention if sick while on the campus. If prices make it necessary, board will be adjusted accordingly.

Laundry: A laundry fee will be charged in addition to the room and board charge and will be at cost. It will probably not exceed \$2.50 per month.

Music: Five dollars per month will be charged for private lessons in piano, violin and voice. One dollar will be charged each month (4 weeks) for use of the school's pianos to those piano students who use the school's pianos for practice. No band or glee club fee is charged.

Maintenance Fee: A maintenance fee of \$5 per month (4 weeks) will be charged to all students living outside Harrison, Stone, Jackson, and George Counties. This fee is used to pay for lights, heat, water and maintenance of that part of the plant used for non-boarding purposes. This maintenance fee must be paid each month by all Mississippi and non-resident students whose parents are not actual residents of the supporting counties. This regulation authorized by the Board of Trustees, is strictly enforced and is in accordance with state laws.

Electrical Appliance Fee: Each room is provided with a double socket with two one-hundred watt globes for which

there is no extra charge. Any additional consumption of current will be charged for at the rate of 25c per month for each one-hundred watts or fraction thereof. Radio charge, 25c per month. Heating units and other appliances that use a larger amount of electricity are prohibited. Smoothing irons are permitted without additional cost.

Miscellaneous fees: A deposit of 50 cents for a room key will be charged all students. This fee is returnable if and when the student returns the key.

Non-Resident Tuition: There will be a Non-Resident Tuition charge of \$150.00 per semester for all students whose parents or guardians are not legal residents of the State of Mississippi. This tuition is used to pay instructional, administrative, and other operational costs. This tuition applies equally to all college students and high school students, not legal residents. This tuition also applies equally to high school students who are twenty-one years of age or above. Non-Resident tuition is due and payable at the beginning of each semester.

A breakage deposit of \$2.50 is required each semester of all college students taking chemistry, biology, physics, or home economics. This fee is returnable at the end of each semester if no apparatus is broken or lost.

A fee of fifty cents is charged all students for the privilege of taking a deferred or special examination.

Students will be expected to purchase gym suits immediately on arrival at a cost of approximately \$5.00 each.

Two transcripts of credit will be furnished students without charge. A fee of fifty cents will be charged for each transcript of record after two have been issued.

No fees are charged except those mentioned above.

Students should fare very well on two or three dollars additional spending money per month.

SUMMARY OF EXPENSES

(a) Dormitory students coming from Harrison, Stone, Jackson or George counties will pay the following on entering:

Matriculation fee	\$10.00
First month's room and board	27.50
First month's laundry (as per contract, approximately)	2.50
Key deposit fee50
Breakage deposit (for science students only)	2.50
Total due upon registration county students	\$43.00

After the first month, expenses will be \$30.00 per month for county students payable each month, in advance.

(b) Dormitory out of county (Mississippi) students coming from other than Harrison, Stone, Jackson, and George counties will pay as follows on entering:

Matriculation fee	\$10.00
Maintenance fee	5.00
First month's room and board	27.50
First month's laundry (as per contract, approximately)	2.50
Key deposit fee50
Breakage deposit (for science students only)	2.50
Total due upon registration out of county (Mississippi) students	\$48.00

After the first month expenses for board, laundry, and maintenance fee for out of county (Mississippi) and non-resident students will be \$35.00 per month payable each month in advance.

(c) College students who live in town will pay only the \$10.00 matriculation fee and deposit \$2.50 for breakage deposit if registered in a science course.

(d) All music students will add music fees to the above

(e) Full time Vocational and Technical courses: Wood manufacturing, Sheet-metal, Radio Mechanics, and Auto Mechanics. \$35.00 per month, (4 weeks).

(f) Extensive refresher courses for high school students. \$25.00 per month, (4 weeks).

HOUSING ACCOMODATIONS

HOUSING ACCOMODATIONS FOR MARRIED STUDENTS: Partially furnished efficiency apartments are available in the apartment dormitory for married veterans. Rent will be \$22.50 per month with utilities furnished, payable in

advance. Reservations may be made by depositing \$10 which will be credited to the first month's rent.

Trailer units completely furnished, located adjacent to the college campus are available to married veterans. Monthly rental will be \$16.00 for the standard and \$18 for the expandable trailers with utilities furnished. Rental will be payable monthly in advance. Reservations may be made by depositing \$10 which will be credited on the first month's rent.

STUDENT LABOR

The school employs very little outside labor. Girls receive pay for dining hall work, for care of the dormitory halls, for clerical work and for library work. Boys are paid for farm work, for the care of the buildings, and for odd jobs.

A number of students work a part of their way through school and these students comprise the finest and most deserving group of the whole student body. Since jobs cannot be provided for all students, it is the policy of the school authorities to award jobs according to the following plan:

First, no student is permitted to have and hold a job who does not give it proper attention. Second, students holding jobs must do satisfactory school work. Third students holding jobs during one session are given until the first of August following the close of the session to pay matriculation fee and re-apply for work. After the first of August students who have not paid matriculation fee and re-applied for work are taken from the working lists; and the jobs vacated are assigned to other students. Fourth, students coming from Harrison, Stone, Jackson and George Counties, the counties which support the school, are given preference. Fifth, students are expected to keep jobs awarded them throughout the session and must not ask to be relieved from them without good cause.

WHAT EACH STUDENT SHOULD BRING

Each student must bring or secure immediately upon arrival the following:

6 sheets for single beds	2 dresser scarfs
3 pillow cases	2 pairs window curtains and rods
1 pillow	1 laundry bag
2 bedspreads	1 drinking glass
2 blankets	Towels
1 comfort	Toilet articles
Evening dress for girls	Coat hangers

Students should bring electric table lamps from home.

All students should bring one pair of high-topped rubber-soled tennis shoes. White is preferred for girls.

HOW TO REGISTER

As soon as a student has definitely decided to enter school here he should fill out the application form in the back of this catalogue and mail it, together with his \$10.00 matriculation fee, to the President. **If the student is entering here for the first time, he should have his high school principal forward a transcript of his record direct to the Registrar of the college.** Room reservations are made in the order in which fees are paid. This fee is returnable upon request at any time prior to the opening of school, but is not returnable after September 8.

The refund policy of Perkinston Junior College with reference to veteran trainees in regard to all fees and tuition is placed on a graduated scale as follows:

For one week or less of attendance the charge will be 20% of the listed rate. Between one and two weeks, 30%. Between two and three weeks, 40%. Between three and four weeks, 60%. Between four and five weeks, 80%. Over five weeks, 100%.

The Health Certificate will be required before classification is completed.

Upon arriving on the campus at the opening of school, the student should report to the proper dean and be assigned to a room. He should then report to the business manager and pay the first month's board and tuition and obtain a receipt. The student will be called upon to show this receipt before being classified. Direction for classification may be had at the office of the business manager. Any spending money the student may have should be deposited at the Student Bank and checked out by the students as desired. Students must not keep money in their rooms.

HOW TO WITHDRAW

If a student finds it necessary to leave school during the session, he must get an official withdrawal slip signed by the proper official and must follow specific instructions in withdrawing.

Before leaving school at the close of the session, the student should get a withdrawal slip signed by the proper dean and other officials.

Any student withdrawing from school without procuring this slip will have a failure marked against him on his grades and a notation on the record "Withdrawn without permission or explanation."

SUMMER SESSION, 1948

A ten weeks session for college and high school students will be operated beginning June 2, and running through August 12, 1948. College students may earn twelve semester hours and high school students not more than one and one-half units. College science students may earn fourteen semester hours by attending a thirteen weeks session. Students interested in attending summer school should write for a summer school bulletin.

GENERAL ACADEMIC REGULATIONS

The work at Perkinston Junior College is divided into two divisions—high school and college. The work is designed as a continuous whole, but there are separate entrance requirements and separate requirements for graduation.

GENERAL REGULATIONS

Certain general academic regulations that apply to both departments are listed below:

1. For the purpose of recording grades and reporting to parents, the school year is divided into two semesters called the first semester and the second semester. Each semester is divided into three terms of six weeks each. At the end of the first two terms of each semester a preliminary estimate of progress will be reported. This is not an official grade. Its purpose is to give information on the progress of the student. A copy of this report will be mailed to the parent or guardian and a copy given to the student. Official grades will be reported and recorded at the end of each semester.
2. In order to obtain credit for a course a student must attend two-thirds of the meetings of the class during the semester.
3. Students entering college as much as one month late will not be permitted to carry a full semester credit.
4. The following college subjects are considered year courses and less than one year's work cannot be counted toward graduation: European History, American History, Foreign Language, Chemistry 10-11 and 12-13, Home Economics 10-11, Bookkeeping 10-11, Shorthand 10-11, Physics.
5. All high school subjects will be considered unit courses except: Civics, Economics, Typewriting, Geography, International Relations, Aeronautics, and Algebra II.
6. Any student making an average lower than E, must repeat the course in order to secure credit for it.
7. If a student has made a grade of E on the first semester's work of a year's course, the E may be changed to a D provided the second semester grade is C or above.

8. Except by special permission, college students will not be permitted to take less than twelve semester hours of academic work. College students will not be permitted to take more than eighteen hours of academic work except in the agricultural group in which nineteen is the maximum. Except by special permission high school students will not be permitted to take more than four or less than four major subjects. College students earning less than nine hours a semester may be asked to withdraw from school. High school students passing less than one and one-half units of work a semester will be subject to reclassification, if, in the opinion of the school authorities, such students could do more acceptable work in a lower classification. If, in the opinion of the authorities, such student failures are due to indifference and neglect, the students will be asked to withdraw from school.

9. A student must have written permission from the Registrar to change his classification or drop a subject. Failure to observe this rule will result in a grade of F for the subject dropped.

10. To be eligible for work that pays part or all of a student's expenses in school, the student must have earned not less than one and one-half units in high school or nine semester hours the last semester he was in college. Subjects pursued for seven weeks or more may be dropped by permission, but a failure will be entered on the record.

11. Students who offer two units of high school work in a modern language will not be permitted to take college freshman work in the language for credit.

ABSENCES

There are two kinds of absences defined as follows:

An excused absence is one for which a student offers a reasonable excuse acceptable to the administration.

An unexcused absence is one for which a student does not or cannot offer a reasonable excuse, acceptable to the administration.

Any unexcused absence immediately before or after a holiday shall count as two unexcused absences.

For all unexcused absences, students will have reductions made in their grades. The rule applies separately to each subject taken.

A student who is absent for more than one-third of the class sessions in any semester, regardless of the cause of the absences, cannot receive credit for the semester's work.

College students who make an "A" or "B" on academic subjects with no grades lower than "C" in other subjects during the previous six weeks' period will be allowed a free cut in that subject except when the student take an unearned cut or has been absent from class with excused absences, for several times. Cuts will not be allowed in "A" or "B" subjects if it involves an unexcused absence in a "C" subject. Cuts will not be allowed in such courses as physical education, Glee Club, library science, unless taken with other cuts to permit a student to be away from the campus during the entire forenoon, afternoon, or whole day.

GRADING SYSTEM

All grades are reported on a six-point letter scale as follows:

A.—Excellent: Represents superior work, largely of a creative nature and in addition to the regularly prescribed work of the class.

B.—Good: Represents work above the average achievement in the regularly prescribed work.

C.—Satisfactory: Represents average achievement in the prescribed work.

D.—Below Average: Lowest passing grade. Represents a level of achievement in the regularly prescribed work of the class below the average in the same relationship as the grade "B" is above the average.

E.—Condition: Represents a grade below the passing mark but which may be brought to a passing mark under certain conditions as follows: (1) A grade of E in the first semester of a year course may be changed to a D if the grade in the second semester of the course is C or above. (2) A special examination to remove a condition may be taken by a student

on approval of a committee composed of the president, the Registrar, and the individual teacher, provided the condition in the course was caused by time lost due to illness or some other emergency. A grade of D must be made on the special examination.

F.—Failure: Represents failure to do the regularly prescribed work of the class. The course must be repeated for credit.

At the end of the first two six-week terms of each semester a preliminary estimate of the progress will be reported. This is not an official grade; its purpose is to give information on the progress of the student. Official grades will be reported and recorded at the end of each semester and will be determined by the combined class standing and the result of a written examination, the examination to be one hour in length and to count approximately one-fourth. The grade will include, in addition to the examination, estimates on the following points: Class attendance, achievement on tests, quality of recitation, quality of completed assignments, promptness in completing work, persistence for mastery, self-reliance in work, application during study, attention to class activities, general attitude in class.

EXAMINATIONS

The examinations given by the faculty of the Perkinson Junior College are of four types: (1) regular examinations, (2) deferred examinations, (3) special examinations, and (4) entrance examinations.

Regular examinations are those given to classes according to a schedule determined by duly constituted authorities. They are to be one hour in length and to count approximately one-fourth in determining the semester average.

Deferred examinations are those given to students who were unable to take the regular examinations. In all cases a student must secure written permission from the Registrar before he is permitted to take the examination. A fee of fifty cents shall be paid by the student before he takes the deferred examination.

Special examinations are those given to students to remove conditions on subjects when the condition was caused

by time lost due to illness or to some other emergency. In order to be permitted to take a special examination, the student must secure the approval of a committee composed of the Registrar, the President, and the teacher of the course. A fee of fifty cents is charged for each special examination. A grade of D must be made on the special examination in order to remove the condition.

Entrance examinations are those given to students applying for admission who are unable to meet the regular entrance requirements.

HONOR ROLL

The Registrar will announce an Honor Roll at the end of each semester. Students whose semester average in academic subjects is B with no grade lower than C will be listed on the Honor Roll.

HIGH SCHOOL DIVISION

HIGH SCHOOL ENTRANCE REQUIREMENTS

Students desiring to enter the high school division must have the superintendent or principal of their school mail to the Registrar here a transcript of record showing that they have completed not less than eight units of high school work, two of which must be in English and one in first year algebra.

HIGH SCHOOL REQUIREMENTS FOR GRADUATION

Candidates for graduation from the high school must complete not less than 16 units of work, 10 of which are required. The other six may be selected from the subjects offered. Students desiring to graduate from the high school division must earn not fewer than three units in residence.

A student who earns an average of B during his high school course will be graduated "with honors."

REQUIRED SUBJECTS

Home Economics or Agriculture or Shop	2 units
English	4 units
Social Studies (American History)	2 units
Mathematics	2 units
Students with eight units or more but less than eleven	

units will be considered juniors. Students with eleven units or more will be considered seniors.

HIGH SCHOOL PROGRAM OF STUDIES

11th Grade:

Required:

English III
American History III
Plane Geometry III
Physical Education

Elect One Unit:

International Relations (one-half unit) II
 Geography (one-half unit) III
 Aeronautics (one-half unit) III
 Chemistry III
 Typewriting I
 Agriculture I
 Home Economics I
 Shop I

12th Grade:**Required:**

English IV
 Civics (one-half unit) IV
 Economics (one-half unit) IV
 Physical Education

Elect Two Units:

Algebra II (advised for college entrance), IV
 Physics IV
 Agriculture II
 Home Economics II
 Typewriting I
 Stenography I
 Shop II
 Mechanical Drawing (one-half unit) I

Agriculture, Shop, or Home Economics is required of all high school students unless two units have been earned in prior grades.

JUNIOR COLLEGE DIVISION**PRELIMINARY STATEMENT**

The Junior College division comprises the first two years of college work. This work has been planned according to the laws of the State governing such work and to conform to the regulations set forth by the Accrediting Commission on Junior Colleges.

Two years of junior college work at Perkinson offer to students an opportunity of obtaining two years of high class college training at a minimum cost.

COLLEGE ENTRANCE REQUIREMENTS

The entrance requirements for Junior College is completion of not less than fifteen units of standard high school work in a school recognized by a standard accrediting agency.

The following units must be included in those presented for college entrance:

English	4 units
Mathematics	2 units
Science	1 unit
History and Civics	2 units

We strongly recommend that students preparing for college earn not less than 1½ units in Algebra and one unit in Plane Geometry.

JUNIOR COLLEGE REQUIREMENTS FOR GRADUATION

Each student graduating from the Junior College division will be required to do the following:

1. Earn not less than 60 semester hours of academic credit.

2. Earn 5 semester hours of non-academic credit as follows:

a. Physical Education	4 hours
b. Library Science	1 hour

3. Earn not less than 60 quality points.

60 semester hours should be earned in one of the groups described under the caption PROGRAM OF COLLEGE STUDIES.

The following courses are required for graduation: English 10-11, English 50-51, (waived in Groups 2, 3, and 5), Chemistry 10-11 or Biology 10-11, Health 10-11, Social Studies 6 hours. Physical Education 10-11 and 50-51; and Library Science 10.

College students with less than 24 academic hours will be considered freshmen. Students with 24 or more academic hours and 24 quality point will be considered sophomores.

QUALITY POINTS

For each semester hour of academic work completed quality points will be acquired as follows:

A	3 quality points
B	2 quality points
C	1 quality point
D	0 quality point
E	0 quality point
F	0 quality point

A course in which a student has failed to make quality points may be repeated and quality points earned in it according to the quality point grading system.

A student transferring to this institution from another school will be credited with the number of quality points which he earned in the school or schools from which he transferred. If the school from which he transferred does not have a quality point requirement, the grades which the student transferred will be the basis for quality points according to our quality point schedule.

A student who has earned a quality point average of 2.3 for his entire course shall be graduated "with honors;" one who has earned a quality point average of 2.7 for his entire course shall be graduated "with special honors."

SPECIAL STUDENTS

A student over twenty-one years of age of good moral character who cannot or does not present fifteen units of high school work but desires special training in certain courses, may be admitted, if, in the opinion of the Registrar, the student is able to carry the work desired. Such a student shall be known as a special student. Veterans who cannot meet the entrance requirements will be classed as special students. Under no circumstances are students who have not satisfied the entrance requirements given college credit for work done in the college department.

IRREGULAR STUDENTS

All students are required to take not less than twelve nor more than eighteen hours work for credit. Occasionally conditions arise making it advisable to permit a student to take less than twelve hours of work. Such a student shall be known as an irregular student. Before being admitted as an irregular student, permission from the President or Registrar must be had.

HOW COURSES ARE NUMBERED

College courses numbered 10 and 11 are considered freshman courses; courses numbered 50 and above are considered sophomore courses; and courses numbered 12 to 21 may be either freshman or sophomore courses. Courses No. 100 to 105 are full time vocational and technical courses. Sophomores will be expected to schedule most of their work in the sophomore classes. Prerequisites and sequences of courses are set forth more fully on later pages.

PROGRAM OF COLLEGE STUDIES

PROGRAM OF COLLEGE STUDIES

The college courses offered are arranged in 10 different groups of twenty-one programs of studies outlined in the following pages. Each group contains general citizenship courses and some vocational, professional, or general cultural courses.

Each student is expected to register in one of the groups. If, however, a student has a definite plan for the future that calls for a different arrangement of courses he may, by special permission from the Registrar, be permitted an arrangement of courses different from any outlined in the groups.

Students should read this entire section and select a group that will give the training needed and desired. In selecting the group the student should keep in mind what he expects to do when he has finished here. If the student expects to continue his training in a senior college, he should select a group that parallels the course he would take if in a senior college.

Students undecided as to their future work or training should select group one leading to the B. A. Degree, or group seven leading to B. S. degree.

The classification committee will advise with every student before he is classified. All classifications must be reviewed and approved by the Registrar or the President.

Once a student is classified, he cannot change his classification without the written approval of the Registrar or President.

Students attempting to transfer from one group to another at the beginning of the sophomore year may find it difficult to meet graduation requirements.

Fifteen hours are considered a normal amount of work in all the groups. Eighteen academic hours are the maximum allowed in all groups except group two in which nineteen may be permitted.

Students desiring to take music in addition to eighteen hours of regular academic work may do so, but will receive no credit for music courses.

In all groups, courses in the sophomore year should be largely a continuation of courses selected in the freshman year. However, as a general rule, courses listed in freshman year may be elected in sophomore year provided a majority of the courses for which a student is classified are numbered 12 or above.

Students who have definitely decided to continue in a liberal arts senior college should not elect commerce, agriculture, trades, and home economics. These subjects are permitted as elective for the student who has not decided what he wants, and who desires to explore these fields.

Pre-law students should arrange to complete not less than 60 semester hours exclusive of health and hygiene, agriculture, trades, home economics, commerce and music.

GROUP I—GENERAL

This group is designed for students planning to study law, Journalism, or complete the B. A. Degree.

Freshman Year

1st Semester		2nd Semester	
English 10	3 hrs.	English 11	3 hrs.
Health 10	2 hrs.	Health 11	2 hrs.
French 10 or Spanish 10	3 hrs.	French 11 or Spanish 11	3 hrs.
American Government 10	3 hrs.	Economics 11	3 hrs.
Chemistry 10 or Biology 10	4 hrs.	Chemistry or Biology 11	4 hrs.
Library Science 10	1 hr.	English 17	2 hrs.
Physical Education 10	1 hr.	Physical Education 11	1 hr.
English 16	2 hrs.		

Sophomore Year

1st Semester		2nd Semester	
English 50	3 hrs.	English 51	3 hrs.
French or Spanish 50	3 hrs.	French or Spanish 51	3 hrs.
History 12	3 hrs.	History 13	3 hrs.
English 12	2 hrs.	English 13	2 hrs.
Physiology 50	3 hrs.	Sociology 15	3 hrs.
Mathematics 10	3 hrs.	Mathematics 11	3 hrs.
Physical Education 50	1 hr.	Physical Education 51	1 hr.

GROUP 2—AGRICULTURE

The two years of agricultural work offered here is on a parallel with identical courses at senior agricultural colleges of Mississippi. Students seeking agricultural work are able to get the freshman and sophomore work here and enter a senior agricultural college as a qualified junior.

These courses lead toward qualifications for teachers of vocational agriculture, county agent, agricultural engineering, agricultural administration, agricultural economics, forestry and veterinary science.

Students planning to enter a senior college after completing the sophomore year should earn at least 70 hours of work.

GENERAL AGRICULTURAL CURRICULUM

B. S. Degree Preparatory

Freshman Year

1st Semester		2nd Semester	
English 10	3 hrs.	English 11	3 hrs.
Chemistry 10	4 hrs.	Chemistry 11	4 hrs.
Biology 10	4 hrs.	Biology 11	4 hrs.
Agriculture 10	3 hrs.	Algebra 10	3 hrs.
Agriculture 12	3 hrs.	Agriculture 13	3 hrs.
Library Science 10	1 hr.	Physical Education 11	1 hr.
Physical Education 10	1 hr.		

Sophomore Year

1st Semester		2nd Semester	
Agriculture 50	3 hrs.	Agriculture 51	3 hrs.
Agriculture 52	3 hrs.	Agriculture 53	3 hrs.
*Physics 50	4 hrs.	Trigonometry 11	3 hrs.
American Government 10	3 hrs.	Agricultural Economics 11	3 hrs.
Health 10	2 hrs.	Botany 50	3 hrs.
Public Speaking 12	2 hrs.	Health 11	2 hrs.
Physical Education 50	1 hr.	Physical Education 51	1 hr.

*Four hours in Physics 50 may be counted toward graduation in Group

AGRICULTURAL ADMINISTRATION AND AGRICULTURAL ECONOMICS

Freshman Year

1st Semester		2nd Semester	
Chemistry 10	4 hrs.	Chemistry 11	4 hrs.
Biology 10	4 hrs.	Biology 11	4 hrs.
English 10	3 hrs.	English 11	3 hrs.
Agriculture 10	3 hrs.	Algebra 10	3 hrs.
American Government 10	3 hrs.	Economics 11	3 hrs.
Library Science 10	1 hr.	Physical Education 11	1 hr.
Physical Education 10	1 hr.		

Sophomore Year

1st Semester		2nd Semester	
Accounting 10	3 hrs.	Accounting 11	3 hrs.
Agriculture 12	3 hrs.	Agricultural Economics 11	3 hrs.
Agriculture 50	3 hrs.	Agriculture 13	3 hrs.
Agriculture 52	3 hrs.	Agriculture 51	3 hrs.
Health 10	2 hrs.	Agriculture 53	3 hrs.
Public Speaking 12	2 hrs.	Health 11	2 hrs.
Physical Education 50	1 hr.	Physical Education 51	1 hr.

PRE-FORESTRY**Freshman Year**

1st Semester		2nd Semester	
English 10	3 hrs.	English 11	3 hrs.
Biology 10	4 hrs.	Biology 11	4 hrs.
Chemistry 10	4 hrs.	Chemistry 11	4 hrs.
Algebra 10	3 hrs.	Trigonometry 11	3 hrs.
Health 10	2 hrs.	Health 11	2 hrs.
Physical Education 10	1 hr.	Economics 11	3 hrs.
Library Science 10	1 hr.	Physical Education 11	1 hr.

Sophomore Year

1st Semester		2nd Semester	
Agriculture 12	3 hrs.	Agriculture 51	3 hrs.
Agriculture 52	3 hrs.	Botany 50	3 hrs.
English 12	2 hrs.	English 13	2 hrs.
History 12	3 hrs.	History 13	3 hrs.
Physics 50	4 hrs.	Physics 51	4 hrs.
Mechanical Drawing 10	2 hrs.	Mechanical Drawing 11	2 hrs.
Physical Education 50	1 hr.	Physical Education 51	1 hr.

PRE-VETERINARY**Freshman Year**

1st Semester		2nd Semester	
English 10	3 hrs.	English 11	3 hrs.
Chemistry 10	4 hrs.	Chemistry 11	4 hrs.
Biology 10	4 hrs.	Biology 11	4 hrs.
Algebra 10	3 hrs.	Poultry 13	3 hrs.
Health 10	2 hrs.	Health 11	2 hrs.
Library Science 10	1 hr.	Physical Education 11	1 hr.
Physical Education 10	1 hr.		

Sophomore Year

1st Semester		2nd Semester	
Chemistry 50	4 hrs.	Chemistry 51	4 hrs.
Dairying 50	3 hrs.	Animal Husbandry 53	3 hrs.
American History 50	3 hrs.	American History 51	3 hrs.
French 10	3 hrs.	French 11	3 hrs.
American Government 10	3 hrs.	English 13	2 hrs.
English 12	2 hrs.	Botany 50	3 hrs.
Physical Education 50	1 hr.	Physical Education 51	1 hr.

GROUP 3—BUSINESS EDUCATION

This group should be selected by students who want to equip themselves to do office work, or who expect to continue training in a senior commercial college. Students who major in Group 3 will be given a junior college diploma and also certificates of proficiency in stenography, typing and/or accounting.

Accounting And Auditi**Freshman Year**

1st Semester		2nd Semester	
English 10	3 hrs.	English 11	3 hrs.
Accounting 10	3 hrs.	Accounting 11	3 hrs.
Typing 10	3 hrs.	Typing 11	3 hrs.
Mathematics 12	3 hrs.	Mathematics 10	3 hrs.
Health 10	2 hrs.	Health 11	2 hrs.
Shorthand 10		Shorthand 11	
or English 12	3-2 hrs.	or, English 13	3-2 hrs.
Physical Education 10	1 hr.	Physical Education 11	1 hr.
Library Science	1 hr.		

Sophomore Year

1st Semester		2nd Semester	
Accounting 50	3 hrs.	Accounting 51	3 hrs.
Business Law 10	3 hrs.	Secretarial Practice 11	3 hrs.
English 50		English 51	
or, Shorthand 50	3 hrs.	or, Shorthand 51	3 hrs.
Economics 11	3 hrs.	American Government 10	3 hrs.
Physical Education 50	1 hr.	Sociology 15	3 hrs.
		Physical Education 51	1 hr.

Secretarial Training Major**Freshman Year**

1st Semester		2nd Semester	
English 10	3 hrs.	English 11	3 hrs.
Shorthand 10	3 hrs.	Shorthand 11	3 hrs.
Typing 10	3 hrs.	Typing 11	3 hrs.
American Government 10	3 hrs.	Economics 11	3 hrs.
Health 10	2 hrs.	Health 11	2 hrs.
Library Science 10	1 hr.	Dictaphone 13	2 hrs.
Physical Education 10	1 hr.	Physical Education 11	1 hr.

Sophomore Year

1st Semester		2nd Semester	
Shorthand 50	3 hrs.	Shorthand 51	3 hrs.
Business Law 10	3 hrs.	Secretarial Practice 11	3 hrs.
English 50	3 hrs.	English 51	3 hrs.
Mathematics 12	3 hrs.	Sociology 15	3 hrs.
American History 50		American History 51	
or, Accounting 10	3 hrs.	or, Accounting 11	3 hrs.
Physical Education 505	1 hr.	Physical Education 51	1 hr.

GROUP 4—HOME ECONOMICS

This group should be selected by women who want special training in this science, or who expect to continue in senior college and become teachers of home economics.

Freshman Year

1st Semester		2nd Semester	
English 10	3 hrs.	English 11	3 hrs.
Chemistry 10	4 hrs.	Chemistry 11	4 hrs.
Home Economics 10	3 hrs.	Home Economics 11	3 hrs.
American Government 10	3 hrs.	Economics 11	3 hrs.
Health 10	2 hrs.	Health 11	2 hrs.
Education 10	3 hrs.	Library Science 10	1 hr.
Physical Education 10	1 hr.	Physical Education 11	1 hr.

Sophomore Year

1st Semester		2nd Semester	
English 50	3 hrs.	English 51	3 hrs.
Home Economics 50	3 hrs.	Home Economics 51	3 hrs.
Biology 10	4 hrs.	Biology 11	4 hrs.
History 12	3 hrs.	History 13	3 hrs.
Psychology 50	3 hrs.	Sociology 50	3 hrs.
Physical Education 50	1 hr.	Physical Education 10	1 hr.
		Home Economics 52	1 hr.

GROUP 5—MUSIC

Piano Major

All students who major in music will be required to participate in band or glee club at the discretion of the music instructors. All students expecting to teach in the Public Schools must take Education 10-11 and Psychology 50-51.

Freshman Year

1st Semester		2nd Semester	
English 10	3 hrs.	English 11	3 hrs.
Health 10	2 hrs.	Health 11	2 hrs.
Education 10	3 hrs.	Education 11	3 hrs.
Piano 10	3 hrs.	Piano 11	3 hrs.
Theory 10	3 hrs.	Theory 11	3 hrs.
Harmony 10	3 hrs.	Harmony 11	3 hrs.
Music Appreciation 10	3 hrs.	Music Appreciation 11	3 hrs.
Library Science	1 hr.	Physical Education	1 hr.
Physical Education	1 hr.		

Sophomore Year

1st Semester		2nd Semester	
English 50	3 hrs.	English 51	3 hrs.
Psychology 50	3 hrs.	Psychology 51	3 hrs.
Piano 50	3 hrs.	Piano 51	3 hrs.
Theory 50	3 hrs.	Theory 51	3 hrs.
Harmony 50	3 hrs.	Harmony 51	3 hrs.
Music History 50	3 hrs.	Music History 51	3 hrs.
Physical Education	1 hr.	Physical Education	1 hr.

VOICE MAJOR

Freshman Year

1st Semester		2nd Semester	
English 10	3 hrs.	English 11	3 hrs.
Health 10	2 hrs.	Health 11	2 hrs.
Education 10	3 hrs.	Education 11	3 hrs.
Voice 10	2 hrs.	Voice 11	2 hrs.
Piano 12 (1 lesson a wk.)	1 hr.	Piano 13 (1 lesson a wk.)	1 hr.
Theory 10	3 hrs.	Theory 11	3 hrs.
Harmony 10	3 hrs.	Harmony 11	3 hrs.
Music Appreciation 10	3 hrs.	Music Appreciation 11	3 hrs.
Library Science	1 hr.	Physical Education	1 hr.
Physical Education	1 hr.	Glee Club	1 hr.
Glee Club	1 hr.		

If Piano 10-11 is elected, Piano 12-13 will not be required and cannot be taken for credit.

Sophomore Year

1st Semester		2nd Semester	
English 50	3 hrs.	English 51	3 hrs.
Psychology 50	3 hrs.	Psychology 51	3 hrs.
Voice 50	2 hrs.	Voice 51	2 hrs.
Piano 52 (1 lesson a wk.)	1 hr.	Piano 53 (1 lesson a wk.)	1 hr.
Theory 50	3 hrs.	Theory 51	3 hrs.
Harmony 50	3 hrs.	Harmony 51	3 hrs.
Music History 50	3 hrs.	Music History 51	3 hrs.
Physical Education	1 hr.	Physical Education	1 hr.
Glee Club	1 hr.	Glee Club	1 hr.

If Piano 52-53 is elected, Piano 54-55 will not be required and cannot be taken for credit.

VOCAL SUPERVISION MAJOR

Freshman Year

1st Semester		2nd Semester	
English 10	3 hrs.	English 11	3 hrs.
Health 10	2 hrs.	Health 11	2 hrs.
Education 10	3 hrs.	Education 11	3 hrs.
Theory 10	3 hrs.	Theory 11	3 hrs.
Harmony 10	3 hrs.	Harmony 11	3 hrs.
Music Appreciation 10	3 hrs.	Music Appreciation 11	3 hrs.
Voice 12	1 hr.	Voice 13	1 hr.
Piano 12	1 hr.	Piano 13	1 hr.
Physical Education	1 hr.	Physical Education	1 hr.
Glee Club	1 hr.		

Sophomore Year

1st Semester		2nd Semester	
English 50	3 hrs.	English 51	3 hrs.
Psychology 50	3 hrs.	Psychology 51	3 hrs.
Theory 50	3 hrs.	Theory 51	3 hrs.
Harmony 50	3 hrs.	Harmony 51	3 hrs.
Music History 50	3 hrs.	Music History 51	3 hrs.
Public School Music 50	3 hrs.	Public School Music 51	3 hrs.
Voice 52	1 hr.	Voice 53	1 hr.
Piano 52	1 hr.	Piano 53	1 hr.
Physical Education	1 hr.	Physical Education	1 hr.
Glee Club	1 hr.	Glee Club	1 hr.

INSTRUMENTAL SUPERVISION MAJOR

(Band and Orchestra)

Freshman Year

1st Semester		2nd Semester	
English 10	3 hrs.	English 11	3 hrs.
Health 10	2 hrs.	Health 11	2 hrs.
Education 10	3 hrs.	Education 11	3 hrs.
Theory 10	3 hrs.	Theory 11	3 hrs.
Harmony 10	3 hrs.	Harmony 11	3 hrs.
Music Appreciation 10	3 hrs.	Music Appreciation 11	3 hrs.
Library Science	1 hr.	Physical Education	1 hr.
Band	1 hr.	Band	1 hr.

Sophomore Year

1st Semester		2nd Semester	
English 50	3 hrs.	English 51	3 hrs.
Psychology 50	3 hrs.	Psychology 51	3 hrs.
Theory 50	3 hrs.	Theory 51	3 hrs.
Harmony 50	3 hrs.	Harmony 51	3 hrs.
Music History 50	3 hrs.	Music History 51	3 hrs.
Public School Music 50	3 hrs.	Public School Music 51	3 hrs.
Physical Education	1 hr.	Physical Education	1 hr.
Band	1 hr.	Band	1 hr.

*If Piano 50-51 is elected, Piano 52-53 will not be required and cannot be taken for credit.

GROUP 6—PRE-ENGINEERING

This group should be selected by students who expect to take training related in any of the engineering courses, or who desire special training in trades.

Freshman Year

1st Semester		2nd Semester	
English 10	3 hrs.	English 11	3 hrs.
Algebra 10	3 hrs.	Trigonometry 11	3 hrs.
Chemistry 10	4 hrs.	Chemistry 11	4 hrs.
Health 10	2 hrs.	Health 11	2 hrs.
Mechanical Drawing 10	2 hrs.	Mechanical Drawing 11	2 hrs.
American Government 10	3 hrs.	Economics 11	3 hrs.
Library Science 10	1 hr.	Physical Education 11	1 hr.
Physical Education 10	1 hr.		

Sophomore Year

1st Semester		2nd Semester	
English 50	3 hrs.	English 51	3 hrs.
Calculus 52	3 hrs.	Calculus 53	3 hrs.
Physics 50	4 hrs.	Analytic Geometry 50	3 hrs.
Mathematics 14	3 hrs.	Physics 51	4 hrs.
American History 50	3 hrs.	American History 51	3 hrs.
Physical Education 50	1 hr.	Physical Education 51	1 hr.

CHEMICAL ENGINEERING

Freshman Year

1st Semester		2nd Semester	
English 10	3 hrs.	English 11	3 hrs.
Chemistry 10	4 hrs.	Chemistry 11	4 hrs.
Algebra 10	3 hrs.	Trigonometry 11	3 hrs.
American Government 10	3 hrs.	Economics 11	3 hrs.
Health 10	2 hrs.	Health 11	2 hrs.
Mechanical Drawing 10	2 hrs.	Mechanical Drawing 11	2 hrs.
Physical Education 10	1 hr.	Physical Education 11	1 hr.
Library Science 10	1 hr.		

Sophomore Year

1st Semester		2nd Semester	
English 50	3 hrs.	English 51	3 hrs.
Chemistry 50	4 hrs.	Chemistry 51	4 hrs.
Physics 50	4 hrs.	Physics 51	4 hrs.
Calculus 52	3 hrs.	Calculus 53	3 hrs.
Mathematics 14	3 hrs.	Geometry 50	3 hrs.
Physical Education 50	1 hr.	Physical Education 51	1 hr.

GROUP 7—SCIENCE

This group should be selected by students who want a pre-medical, pre-dental, pre-pharmaceutical, pre-technician, or science major. Leading to the B. S. Degree in Arts and Sciences.

Freshman Year

1st Semester		2nd Semester	
English 10	3 hrs.	English 11	3 hrs.
French 10	3 hrs.	French 11	3 hrs.
Algebra 10	3 hrs.	Trigonometry 11	3 hrs.
Biology 10	4 hrs.	Biology 11	4 hrs.
Chemistry 10	4 hrs.	Chemistry 11	4 hrs.
Physical Education 10	1 hr.	Physical Education 11	1 hr.
Library Science 10	1 hr.		

Sophomore Year

1st Semester		2nd Semester	
English 50	3 hrs.	English 51	3 hrs.
French 50	3 hrs.	French 51	3 hrs.
History 12	3 hrs.	History 13	3 hrs.
Chemistry 50	4 hrs.	Chemistry 51	4 hrs.
Physics 50	4 hrs.	Physics 51	4 hrs.
Health 10	2 hrs.	Health 11	2 hrs.
Physical Education 50	1 hr.	Physical Education 51	1 hr.

GROUP 8—TEACHER TRAINING

Elementary Curriculum

Freshman Year

This group should be selected by students who expect to become teachers. Upon completion of this course, a teacher's license valid for two years will be granted.

1st Semester		2nd Semester	
English 10	3 hrs.	English 11	3 hrs.
Chemistry 10 or Biol. 10	4 hrs.	Chemistry 11 or Biol. 11	4 hrs.
Health 10	2 hrs.	Health 11	2 hrs.
Public School Music 10	3 hrs.	Public School Music 11	3 hrs.
Education 10	3 hrs.	Education 11	3 hrs.
Library Science 10	1 hr.	Physical Education 11	1 hr.
Physical Education 10	1 hr.		

Sophomore Year

1st Semester		2nd Semester	
English 12	2 hrs.	English 13	2 hrs.
English 50	3 hrs.	English 51	3 hrs.
American Government 10	3 hrs.	Sociology 50	3 hrs.
Psychology 50	3 hrs.	Psychology 51	3 hrs.
Physical Education 50	1 hr.	Physical Education 51	1 hr.
Elective		Elective	

HIGH SCHOOL CURRICULUM

Freshman Year

1st Semester		2nd Semester	
English 10	3 hrs.	English 11	3 hrs.
Chemistry 10 or Biology 10	4 hrs.	Chemistry 11 or Biology 10	4 hrs.
American Government 10	3 hrs.	Economics 11	3 hrs.
Education 10	3 hrs.	Mathematics 10	3 hrs.
Health 10	2 hrs.	Health 11	2 hrs.
Library Science 10	1 hr.	Physical Education 11	1 hr.
Physical Education 10	1 hr.		

Sophomore Year

1st Semester		2nd Semester	
History 12	3 hrs.	History 13	3 hrs.
English 50	3 hrs.	English 51	3 hrs.
Psychology 50	3 hrs.	Psychology 51	3 hrs.
English 12	2 hrs.	English 13	2 hrs.
Elective	4 hrs.	Elective	4 hrs.
Physical Education 50	1 hr.	Physical Education 51	1 hr.

HEALTH AND PHYSICAL EDUCATION

Freshman Year

1st Semester		2nd Semester	
English 10	3 hrs.	English 11	3 hrs.
Chemistry 10 or		Economics 11	3 hrs.
Biology 10	4 hrs.	American Government 10	3 hrs.
Education 10	3 hrs.	Chemistry 11 or	
Mathematics 12	3 hrs.	Biology 11	4 hrs.
Health 10	2 hrs.	Health 11	2 hrs.
Library Science 10	1 hr.	Physical Education	1 hr.
Physical Education	1 hr.		

Sophomore Year

1st Semester		2nd Semester	
English 50	3 hrs.	English 51	3 hrs.
Psychology 50	3 hrs.	Anatomy and Physiology 51	3 hrs.
Speech 12	2 hrs.	Speech 13	2 hrs.
History 50	3 hrs.	History 51	3 hrs.
Electives in 2nd Major	6 hrs.	Electives in 2nd Major	6 hrs.
Physical Education	1 hr.	Physical Education	1 hr.

GROUP 9—PRE-NURSING

Freshman Year

1st Semester		2nd Semester	
English 10	3 hrs.	English 11	3 hrs.
Biology 10	4 hrs.	Biology 11	4 hrs.
American Government 10	3 hrs.	Economics 11	3 hrs.
Chemistry 10	4 hrs.	Chemistry 11	4 hrs.
Health 10	2 hrs.	Health 11	2 hrs.
Physical Education 10	1 hr.	Physical Education 11	1 hr.
Library Science 10	1 hr.		

Sophomore Year

1st Semester		2nd Semester	
English 50	3 hrs.	English 51	3 hrs.
Chemistry 50	4 hrs.	Chemistry 51	4 hrs.
Foods 10	3 hrs.	Foods 51	3 hrs.
Psychology 50	3 hrs.	Sociology 155	3 hrs.
History 50		History 51	
or Music Appreciation 10	3-2 hrs.	or Botany 50	3 hrs.
Physical Education 50	1 hr.	Physical Education 51	1 hr.

GROUP 10—TRADES AND INDUSTRY

This group should be selected by students who expect to seek further training in college or industry, and who expect to do specialized work in industry. Those who expect to be able to do practical things and meet their community needs should start here. "Learn to do by doing."

Freshman Year

1st Semester		2nd Semester	
English 10	3 hrs.	English 11	3 hrs.
Algebra 10	3 hrs.	Trigonometry 11	3 hrs.
Chemistry 10		Chemistry 11	
or Biology 10	4 hrs.	or Biology 11	4 hrs.
Health 10	2 hrs.	Health 11	2 hrs.
Shop 10	3 hrs.	Shop 11	3 hrs.
Physical Education 10	1 hr.	Physical Education 11	1 hr.
Library Science 10	1 hr.		

Sophomore Year

1st Semester		2nd Semester	
English 50	3 hrs.	English 51	3 hrs.
Mechanical Drawing 10	2 hrs.	Mechanical Drawing 11	2 hrs.
Mathematics 12	3 hrs.	Mathematics 13	3 hrs.
Physics 50	4 hrs.	Physics 51	4 hrs.
Shop 50	3 hrs.	Shop 51	3 hrs.
American Government 10	3 hrs.	Economics 11	3 hrs.
Physical Education 50	1 hr.	Physical Education 51	1 hr.

DESCRIPTION OF COURSES

AGRICULTURE

Mr. Gammage

Mr. Webb

Mr. Blakeney

10—General Horticulture

A general introduction to horticulture with practical applications for home beautification, propagation, and culture of nursery stock, fruits and vegetables. Two lectures and one laboratory period per week. Credit, three semester hours.

11—Agricultural Economics

A study of economics as it is related to agriculture. Three lectures per week. Credit, three semester hours.

12—AGRONOMY—Field Crops:

Includes varieties, methods, cultivation, and harvesting common field crops and a study of diseases and insects common to field crops. Two lectures and one laboratory period per week. Credit, three semester hours.

13—Poultry Husbandry:

Deals with origin of breeds, poultry farm layouts, costs, feeding, culling, etc. Two lectures and one laboratory period per week. Credit, three semester hours.

50—Dairying.

Deals with selection, feeding, and improvement of dairy cattle. Two lectures and laboratory period per week. Credit, three semester hours.

51—Soils:

A study of the physical, chemical, and biological nature of soils, the fundamentals of soil classification, and the relationship between soils and growing plants. Two lectures and one laboratory period per week. Credit, three semester hours.

52—General Forestry:

Deals with practical development and management of home farm, forest farming, pruning, thinning, fire lines, etc. Two lectures and one laboratory period per week. Credit, three semester hours.

53—Animal Husbandry:

A study of the breeds of live stock, their management and utilization in connection with other farm enterprises. Two lectures and one laboratory period per week. Credit, three semester hours.

ART**20—Design:**

The basic elements of art: principles, techniques of block-printing, and stenciling. Credit three semester hours.

BIBLE

Rev. Fulgham

Rev. Jones

10-11—Old Testament:

A study of the Old Testament in the light of man working with God in the creation of a better world. Beginning with Genesis, not as a history of the creation, but as the call of God, and man's response. Watch the development of man.

Two classes each week. Credit, four semester hours.

12-13—A Survey of the New Testament

With the Bible (American Revised Version as the text, a study is made of the historical setting and content of selected New Testament books beginning with the Pauline letters and then considering the Gospels, **Acts** and **Revelation**. The purpose of the course is to give the student a working knowledge and appreciation of the New Testament scriptures.

Two classes each week. Credit, four semester hours.

BUSINESS EDUCATION**10-11—Introductory Principle of Accounting:**

Mrs. Gregory

Mr. Haley

An introductory course requiring no previous knowledge of bookkeeping or accounting.

This course includes the study of the following topics: Book-keeping equation, journalizing, posting, working papers, closing the books, merchandise accounts, special books of original entry, freight charges, discounts, adjustments at the end of the period, controlling accounts, voucher system, sole proprietorship, partnerships, corporation, manufacturing accounts, inventories, fixed assets, consignments, analysis of statements, bonds, etc. The completion of the practice set and practice in the operation of adding, bookkeeping, and posting machines will be included in this course.

Two lectures and one two-hour laboratory period a week. Credit, six semester hours.

50-51—Cost Accounting:

This course is a continuation of Accounting 10-11; therefore, anyone taking this course must first complete the prerequisite course, Accounting 10-11.

This course includes a firm foundation in basic accounting principles, gives a satisfactory course in cost accounting theory procedure, explains how to use the accounting data in business administration and minimizes the purely clerical work incidental to accounting study. Main topics included are manufacturing cost, outline of the job cost plan, cost accounting for material, cost accounting for labor, nature of factory burden, the normal burden rate, underabsorbed and overabsorbed factory burden and departmental factory burden rates. Cost and Banking sets are included.

Two lectures and one two-hour laboratory period a week. Credit, six semester hours.

10—Business Law:

This course aims to give the students a practical understanding of the laws governing business transactions. It includes laws governing contracts, principal and agent, negotiable instruments, employer and employee, principal and surety, insurer and insured, bailor and bailee, carriers and shippers of passengers, vendor and vendee, relation of partnership, corporation and stockholders, etc. It aims to give the student a working idea of how to handle ordinary business transactions in a legal way.

Class meets three hours a week throughout first semester. Credit, three semester hours.

11—Secretarial Practice:

The purpose of this course is to give the student training in general office practice and procedure. It includes business correspondence, handling of mail, filing and indexing, training in the use of mimeograph and calculating machines, telephoning, and a study of some secretarial traits and duties of a secretary in a business office.

Class meets three hours a week throughout second semester. Credit, three semester hours.

10-11—Elementary Shorthand:

Gregg's Shorthand Manual will be used. Attention will be given to: Phrasing, brief forms, transcripts, letter placement, daily dictation of articles and various letters, reading of Speed studies and Gregg Writer.

Class meets three hours a week throughout both semesters. Credit, six semester hours.

50-51—Advanced Shorthand:

Pre-requisite, Shorthand 10-11.

This course offers training in theory of advanced shorthand. Dictation will be given from new material at varying rates of speed, with emphasis placed upon phrasing, accurate and attractive transcripts, and punctuation of business letters. The Gregg Writer will be studied. Those enrolled in the class will be assigned to various faculty members to take dictation.

The class meets three hours per week throughout both semesters. Credit, six semester hours.

10—Elementary Typewriting:

Twentieth Century Typewriting Manual will be used. Accompanying speed studies and corrective drills will be used. Attention will be given to: Development of keyboard control, figures and symbols not on the keyboard, personal and business letters, addressing letters, addressing envelopes, folding and inserting letters and enclosures, style and placement of letters, centering and tabulating. The class meets six one-hour periods per week throughout the first semester. Credit, three semester hours.

11—Advanced Typewriting:

Pre-requisite, Typewriting 10.

Continuation of Typewriting 10. This course offers training to those who expect to work in an office. The fundamentals include: Styles and placement of business letters, telegrams, invoices, legal documents, payrolls, tabulated reports, carbons, parts and care of the typewriter, correcting of errors, insertions, alignments, rough drafts, stencil cutting and running of the mimeograph machine, contacting lines, typing of thesis, artistic typewriting, telephone calls, filing and indexing letters.

Class meets six one-hour periods a week throughout the second semester. Credit, three semester hours.

Extra practice hours will be required of a student who does not type with sufficient speed to meet the requirements. Students passing a proficiency test are not required to take typewriting.

13—Dictaphone:

Upon the satisfactory completion of a series of eighteen tests issued by the Dictaphone Corporation, Educational Division, a Dictaphone Certificate of Proficiency is awarded upon graduation which enables the student to move promptly into well-paying, responsible secretarial positions.

Class meets three hours a week. Credit, two semester hours. Offered both semesters.

EDUCATION AND PSYCHOLOGY

Mr. Stroud

10—Introduction to Education:

The purpose of this course is to give the student a view of the whole field of education which will serve as a background for more specialized courses. Some of the topics studied are: The aims of education, fundamental principles of teaching, laws of learning, teacher qualifications and surveys. Three classes per week for one semester. Credit, three semester hours.

11—Teaching Elementary Subjects

This course deals with such topics as materials of instruction, techniques, and methods, in all the elementary school subjects. Special attention is given to the teaching of reading, language development, the teaching of the social arts, spelling, etc. Three classes per week. Credit, 3 semester hours.

50—General Psychology

A study of the motivating factors of human behavior. The course is designed to give the student a broad understanding of man's development from birth onward. Topics included are the history of psychology, motivation, thinking, learning, personality development, vocational and employment psychology, love and marriage, etc. as they relate to man's progress towards a better world. Three classes per week. Credit, 3 semester hours.

51—Educational Psychology

Psychological principles underlying the process of teaching are emphasized. Topics include the study of personality and general development of the pre-school child, the early school child, and the later or adolescent child as they relate to the educational program, the psychology of the school subjects, and the psychology of the teachers. Three classes per week. Credit, three semester hours.

ENGLISH**10-1—English Composition, Oral and Written**

Miss Harrell
Miss Cooley

Mr. Stroud
Miss Crowe

A course in which much attention is given the application of rhetorical and grammatical principles in all types of composition, written and oral. During the second semester definite emphasis is placed on the preparation of a research paper. Throughout the year correlated readings will include all the major types of literature.

Three classes each week. Credit, six semester hours.

12-13—Public Speaking:

The training in speech activities of the social and business worlds includes a study of voice and speech mechanisms, debate, interpretation of prose and poetic selections, parliamentary law, story-telling, after-dinner speeches, extemporaneous and formal speeches. Voice recordings of each student will be made and studied in an effort to help each student detect in himself voice or speech defects such as incorrect inflection and interpretation or faulty enunciation and pronunciation.

Two classes each week. Credit, four semester hours.

14-15—Play Production:

The aims of this course are to arouse appreciation of dramatic art and to familiarize students with practical dramatic production. Theory and practical play production are combined. Some study will be devoted to the principles and methods of acting, directing plays, and arranging stage scenery and properties. Attention will be given to analysis of plays, characterizations, conduct of rehearsals, etc.

Two classes per week. Credit, four semester hours.

16-17—Journalism:

Newspaper reporting and technique. A course in news gathering and reporting, news-editing and layout, headline writing, proof and copy-reading, and general news regulations. Attention will center on the writing of the various news stories—the human interest, the feature, the speech interview, the regular interview, and special assignments. Two classes per week. Credit, four semester hours. A year course, it cannot be entered in second semester.

50-51—English Literature, A Survey:

A survey course in English literature. This will be a study of the chronological development of literature as a reflection of the personal lives of the authors; the social, economical, and political trend of their times, and their philosophies of life.

Three classes each week. Credit, six semester hours.

HOME ECONOMICS

Miss McInnis

10—Food Study:

This course includes the principles involved in the selection of foods, preparation of meals, proper etiquette of table service, composition and nutritive value of foods.

One recitation and two laboratory periods per week. Credit, three semester hours.

11—Textiles and Clothing:

This course includes a study of fabrics, sources, preparation and use of fabrics, hand and machine sewing, the use and adaption of commercial patterns, the design and construction of dresses from cotton, linen and silk materials, renovating of clothing, etc.

One recitation and two laboratory periods per week. Credit, three semester hours.

50—Advanced Foods:

This course is a continuation of Food Study 10 with emphasis on more advanced meal planning, preparation and serving.

One recitation and two laboratory periods per week. Credit, three semester hours.

51 Textiles and Clothing:

Clothing problems common to consumer buyer, construction of garments, manufacturing process of fabrics, tests for identification, etc.

One recitation and two laboratory periods per week. Credit, three semester hours.

52—Practical Home Management:

Residence in the home management house is required for home economics' students. Students assume responsibilities for creating a satisfying home environment. This includes experience in management of time, finances, hospitality, and general household methods with reference to group and family living. Credit, one semester hour.

LIBRARY SCIENCE

Mrs. Faucette

10—Library Science:

The purpose of this course is to acquaint the students with the library—its organization, its contents, and its efficient use. The following are studied: Dewey decimal classification; the book; card catalogue; dictionaries; encyclopedias; special reference books; Readers Guide to Periodical Literature; formal bibliography. One recitation per week through the first semester. Credit, one semester hour.

MATHEMATICS

Mr. Gregory

Mr. Paravis

Miss Walker

10—College Algebra:

Topics: A rapid review of high school Algebra, followed by the usual material of college algebra, including quadratic equations,

simultaneous quadratics, theory of quadratic equations, inequalities, ratio and proportion, variation, logarithms, binomial theorem, mathematical induction, progressions, investments, complex numbers; theory of equations, partial fractions, permutations and combinations, probability, determinants, and infinite series.

Pre-requisites, at least one year of high school algebra, preferably two years of high school algebra and one year of plane geometry.

Three classes per week. Credit, three semester hours. Offered both semesters.

11—Plane trigonometry:

Topics: Study of the functions of acute angles, the functions of any angle, the functions of several angles and inverse functions, the solution of right triangles and also oblique triangles both arithmetically and by use of logarithms, the graphing of the functions by means of the Cartesian coordinates and by the unit circle, and the application of trigonometry in trajectories, navigation and surveying.

Pre-requisites, at least one year of high school algebra, but preferably two years of high school algebra, plane geometry and college algebra.

Three classes per week. Credit, three semester hours. Offered both semesters.

12-13—Applied Mathematics:

Topics: Defines mathematics and gives the divisions (elementary, higher, pure and applied) of mathematics. Notes the uses of mathematics in everyday life, the engineering science, military science, natural sciences, social sciences, medical sciences, and the arts. The main principles of elementary mathematics which include arithmetic, algebra, geometry, trigonometry, and elementary calculus are taken up and their many uses noted. This course includes units on numbers and fractions, short cuts and proofs, exponents, radicals, binomial theorem, and logarithms, measurement, ratio and proportion, percentage, interest, taxes, farm mathematics, progression, permutations and combinations, probability and insurance, savings, investments, budgeting, and elementary surveying.

Three classes per week. Credit, six semester hours.

14—Solid Geometry:

This course consists of the investigation of the properties, relationships, and measurements of lines, surfaces, and volumes of figures of three dimensions as found in the usual subject matter of solid geometry.

Minimum pre-requisite: Plane geometry. Three classes per week. Credit, three semester hours.

15—Aeronautics:

Topics: Brief study of the application of plane and spherical trigonometry in navigation. A rather intensive study of practical air navigation as outlined in the Civil Aeronautics Administration. Finally, a study of the different types of airplanes and their parts and construction.

Three classes per week. Credit, three semester hours.

50—Analytic Geometry:

Topics: Study of Cartesian coordinates, development and application of important formulae, such as length, shape, angle, division area, straight line, normal equation. A rather intensive study of circles, conics, transformations, tangents, normals and polar coordinates.

Pre-requisites: College algebra and trigonometry. If necessary, exceptionally good students might be permitted to take this course and a course in trigonometry concurrently.

52—Differential Calculus:

Topics: Constants, functions and variable; limits; the derivative of a function; general theorems for differentiations; differentiation of transcendental functions; successive differentiation; maxima and minima; partial differentiation; and geometrical and physical application of differentiation.

Pre-requisite: College algebra, trigonometry, and plane analytic geometry. In exceptional cases, a good student might be allowed to take analytics and differential calculus concurrently.

Three classes per week. Credit, three semester hours.

53—Integral Calculus:

Topics: Integration, integration as a limit of a sum, methods of integration, integration formulae, definite and indefinite integrals, and application of integration.

Pre-requisites: Mathematics 10, 11, 50 and 52.

Three classes per week. Credit, three semester hours.

MUSIC

Mr. Ware

Mrs. Hill

Miss Canady

10-11—Music Theory:

A course designed for Music Majors in which the melodic, rhythmic and harmonic elements of music are studied. A study to include sight singing of simple melodies, melodic and rhythmic dictation, and keyboard harmony. Three hours per week. Credit, six semester hours.

50-51—Music Theory:

An advanced course in sight singing, keyboard work, melodic and harmonic dictation. (Pre-requisite-Theory 10-11) Credit, six semester hours.

10-11—Harmony:

A study of scales, intervals, triads, and their inversions. Much practice is given in the harmonization of melodies. Three hours per week. Credit, six semester hours.

50-51—Harmony:

An advanced study of all harmonic principles, dissonances, and secondary chords. (Pre-requisite Harmony 10-11). Three hours per week. Credit, six semester hours.

50—Music History:

A required course for Music Majors and open to others by permission of teacher of the course. A study of music beginning with the early Christian Church. The periods of Bach and Handel, Haydn and Mozart, the advent of Beethoven and the Romantic and Modern Era. Three hours per week. Credit, three semester hours.

51—Music History:

Study of opera, oratorio, and cantata from Gluck to Victor Herbert. (Pre-requisite, Music History 50). Three hours per week. Credit, three semester hours.

10—Music Appreciation:

A course in listening to music literature to develop an understanding and appreciation. All types of music are used and analyzed to foster familiarity with and enjoyment of great music. Three hours per week. Credit, three semester hours.

11—Music Appreciation:

A continuation of Music Appreciation 10 to include the study of 19th and 20th century music. (Pre-requisite, Music Appreciation 10). Three hours per week. Credit, three semester hours.

50-51—Public School Music:

A study of rote singing, fundamentals of music as applied to the directing and leading of school music, courses for the elementary grades, lesson planning, and study of child songs and child voice. Three hours per week. Credit, six semester hours.

PIANO**10-11—Piano: (Private Lessons)**

Fundamentals of technique, reading, and interpretation. Composition selected to suit the individual background and ability. Two thirty-minute recitations per week. Practice, two hours daily. Credit, six semester hours.

50-51—Piano: (Private Lessons)

Advanced study to follow first year course. Selections from the masterpieces of classical, romantic, and modern composers. Continued work on technical and interpretative abilities. Recital required for graduation. Two thirty-minute recitations per week. Practice, two hours daily. Credit, six semester hours.

12-13—Piano: (Private Lessons)

This course is for students who major in voice. One thirty-minute recitation per week. Practice, one hour daily. Credit, two semester hours.

14-15—Piano for Adult Beginners: (Private Lessons)

This course is designed especially for those adults who have not had previous training and do not plan to major in Music. The student is taught the rudimentary techniques of piano. Two private lessons per week. Six practice hours per week. Credit, six semester hours.

52-53—Piano: (Private Lessons)

Continuation of Piano 12-13. One thirty-minute recitation per week. Practice one hour daily. Credit, two semester hours.

VOICE**10-11—Voice (Private Lessons)**

Special attention is given to breath control, tone placement, voice building, flexibility and enunciation. Two half-hours per week. Practice, one hour per day. Credit, four semester hours.

50-51—Voice (Private Lessons)

Continuation of 10-11. Credit, four semester hours.

GLEE CLUB**10-11—Glee Club:**

At the beginning of the session all students, who care to, will be given an opportunity to try out for the glee club. The Glee Club will appear in programs from time to time and will appear in neighboring towns during the Spring.

Attendance at rehearsals and performances of the Glee Club is required of all members. Credit, two semester hours.

BAND**10-11—Band**

Pre-requisite for credit, two years previous training on some musical instrument (wind or percussion).

Requirements are attendance of ensemble rehearsals, two one-half hour private lessons per week, six hours individual practice per week, must play at least one solo in public during the year. Attendance at band practice is required. Credit, two semester hours.

PHYSICAL EDUCATION

Mr. Westerfield

Miss Morgan

Mr. Campbell

The work in the department is based upon the medical reports secured from the student's family physician which must be filed with the college nurse upon entering school. These reports classify the students into the following:

1. Regular physical education classes
2. Restricted physical education classes
3. Corrective physical education classes
4. Rest periods

NO STUDENT WILL BE PERMITTED TO ENTER PHYSICAL EDUCATION CLASSES UNTIL THE MEDICAL REPORTS HAVE BEEN FILED WITH THE NURSE.

The members of the girl's Varsity team (Basketball) will be excused from their physical education classes only during the period their class is studying this particular sport. At the conclusion of the season a comprehensive examination will be given. A physical fitness test will be given to all boys at the beginning and end of each semester.

Boys and girls should bring \$5.00 to purchase a regular gymnasium suit for class wear. Students should also furnish themselves with a pair of white high-top tennis shoes or the money to purchase them.

High School Physical Education:

An orientation course in physical education for the purpose of introducing entering students to games which lead to the major and minor sports, recreational sports, elementary folk and social dancing, gymnastics, stunts, corrective activities, and tumbling.

10-11—Seasonal Sports and Activities:

Fundamental skills and techniques involved in such activities as soccer, speed ball, field ball, field hockey, volley ball, basketball, softball, tumbling, touch football, track, football, baseball, and recreational sports. Instruction will be given in folk and social dancing.

Two hours participation per week throughout the year. Credit, two semester hours.

12-13—Restricted Physical Education:

A course in recreational sports for students unable to take strenuous exercises. Corrective activities given are those recommended by the family physician. Credit, two semester hours.

50-51—Seasonal Sports and Activities:

A continuation of 10-11 with more advanced skills and techniques; a term paper is required of all students. Credit, two semester hours.

52-53—Restricted Physical Education:

A continuation of 12-13; a term paper is required of all students. Credit, two semester hours.

ROMANCE LANGUAGES

Miss Cooley

The aim of the department will be primarily to instill into the lives of the students an appreciation of the culture and civilization of the country. Every effort is made to vitalize the language by the creation of a real atmosphere in the classroom by means of imported visual aids.

10-11—First Year French:

The course is designed for beginners or for those whose preparation is one year or less in high school French. A study of the essentials of grammar, dictation, pronunciation, reading, and conversation will be stressed. The use of the language in a practical form is at all times emphasized.

Three classes per week. Credit, six semester hours.

50-51—Second Year French:

Pre-requisite: one year of college French or two years of high school French.

This course includes a continuation of pronunciation, a rapid and systematic review of grammar, oral and written composition, selected and supplementary readings.

Three classes per week. Credit, six semester hours.

10-11—First Year Spanish.

The course is designed for beginners or for those who have had less than two years of high school Spanish. A study of the essentials of grammar, pronunciation, conversation, dictation, and reading with stress on idioms. Practical use of the language is emphasized.

Three classes per week. Credit, six semester hours.

50-51—Second Year Spanish:

Pre-requisite, one year of college Spanish or two years of high school Spanish.

This course is intended to increase the student's knowledge of the language. It includes a rapid and systematic review of grammar

with emphasis on oral and written composition. Selected and supplementary readings will be required. An increasing emphasis is placed on the active phase of conversation.

Three classes per week. Credit, six semester hours.

SCIENCE

Mr. Faust
Mr. Paravis

Mr. Patten
Mrs. Frantzen

10-11—General Biology:

A course in biology designed to give some acquaintance with those basic biological principles and facts underlying all life. It is thus a cultural course for those students who will take no more biology, and a foundation course for those majoring in science, health, pharmacy, dentistry, nursing, medicine or home economics. It includes a study of the four divisions of the plant kingdom, and some of the more important phyla of the invertebrate and vertebrate animals. Additional topics, especially in the field of embryology and genetics will be studied. Two lecture periods and two laboratory periods per week. Credit, eight semester hours.

50—Elementary Botany:

This course is a study of cell structure, function, diffusion, osmosis, utilization of food, chemistry of digestion, metabolism etc. The physiological and ecological view points are stressed. The relationship of the fundamentals of genetics, as applied to botany, is especially emphasized. Adequate study will be given to the taxonomic classification of representative native plants. A one semester course—two lecture periods and one laboratory period per week. Credit, three semester hours.

10-11—Inorganic Chemistry:

A study of general inorganic chemistry, the properties and numerical relationship of common elements of compounds. Special emphasis will be placed on analytical experiments. The course is required of students of home economics and agriculture and satisfies requirements in freshman chemistry for B. A. Degree in most senior colleges. Two lectures and two laboratory periods per week. Credit, eight semester hours.

12-13—Qualitative Analysis:

A study of detailed general inorganic chemistry. In the laboratory emphasis is placed on qualitative analytical procedures. For students having a thorough background and showing a special aptitude for chemistry. Recommended for students preparing for medicine, dentistry, engineering, and science major in senior college.

Three lectures and two laboratory periods per week. Credit, ten semester hours.

50—Organic Chemistry:

An introduction to the study of organic chemistry. A study of the aliphatic compounds and their derivatives. Two lecture periods and two laboratory periods per week. Credit, four semester hours.

51—Organic Chemistry:

Continuation of Chemistry 50. A study of the aromatic compounds and their derivatives. Two lectures and two laboratory periods per week. Credit four semester hours.

50—General Physics (Mechanics, Molecular Physics, Motion Heat).

In this course emphasis is placed upon the fundamental principles of physics so that the student may be well qualified to continue with specialized work in engineering or science. Illustrated by numerous lecture demonstrations. Three one hour lecture periods and one two hour laboratory period per week. Credit, four semester hours.

51—General Physics (Magnetism, Electricity, Sound and Optics)

A continuation of course 50. This course also includes topics on natural and induced radio activity, thermionics, photoelectric effects, radiation phenomena, and a brief discussion on nuclear structure. Three one hour lecture periods and one two hour laboratory period per week. Credit, four semester hours.

51—Anatomy and Physiology:

This course, through the use of lectures, demonstrations, and laboratory work, is designed to give students a broad understanding of the various integrating structures and functions of the body system. It furnishes an excellent scientific background needed by students in nursing and other allied fields.

Two lecture periods and one laboratory period per week. Credit, three semester hours.

10-11—Health Education:

A study of the organs and systems of the human body. This course especially emphasizes the preservation of the normal functions of these organs and systems. This study is applied to both personal and community health.

Two lectures per week throughout the session. Credit, four semester hours.

SOCIAL STUDIES

Mr. Rivers
Miss Walker

Mr. Campbell
Miss Crowe

10—American Government:

This course is designated to familiarize the college student with the organization and development of our federal, state, and city governments. The development of our political parties will be traced in connection with this course. Three classes per week. Credit, three semester hours.

11—Principles of Economics:

This will be the usual introductory college course in economics. Attention will be given to the foundations of American prosperity. This course will include a study of our natural resources in the United States, especially in the South, an introduction to money and banking business organization, labor organization, the factors in production, the laws regarding production and sales, etc. The influence of standardization of production, the growth of cities, and the concentration of capital will be studied in their influence upon American society.

12-13—Survey of World History:

This course is designed to give the student a survey of the history of man from the stone age to the present. While emphasis is placed on the history of the Western World, all major world civilizations are studied.

14—Latin American Relations:

The aim of this course is to foster sympathetic relations between the Americans by means of a detailed study of the culture and civilization of our southern neighbors. Our past relations with these Latin American republics are closely studied. Present day events are observed and regularly discussed.

Three classes per week. Credit, three semester hours.

15—Introductions to Sociology:

The purpose of this course is to give the students an introduction to sociology and its newer developments. Stress will be laid upon social origins as found in primitive society and upon the underlying fundamentals of geography, biology, psychology, and culture in contemporary society.

Three classes per week. Credit, three semester hours.

50-51—American History:

A study of the political and social growth of the United States from 1492 to the present. During the first semester particular stress will be laid upon the development of the Constitution with the

Hamiltonian, Jeffersonian, and Jacksonian interpretations of it. The second semester's work deals with the Reconstruction Era in the South, economic and industrial expansion, relations between capital and labor, America as a world power, the World War, reconstruction, the New Deal, and World War II.

Three classes per week. Credit, six semester hours.

TRADES AND INDUSTRY

Mr. Nye

Mr. Smith

Mr. Grayson

10—Mechanical Drawing:

Preliminary training in freehand drawing, shades, and shadows. Use of instruments, geometric construction, isometric, oblique and cabinet projection. Development of surfaces and intersections for sheet metal work. Preliminary and special lettering exercises.

Two two-hour laboratory periods each week, two semester hours.

11—Mechanical Drawing:

To present advanced study of working drawings, detail and assembly, requiring self-reliance in the selection of views, sheet layout, and manner of representation. Neatness, accuracy, and economy of time are stressed.

Two two-hour laboratory periods each week. Credit, two semester hours.

10-11—General Shop:

This course will comprise the following units of work: Woodwork, hand tools, use of power machines, sheet metal, soldering, forge work, painting and varnishing, drawing and blueprint reading, electric wiring, sharpening and repairing tools, electric and acetylene welding. One lecture and two two-hour laboratory periods each week. Credit, six semester hours.

10-11—Auto Mechanics:

A study of gas engines, their operation principle as applied to both single and multiple cylinder engines, automobile, truck and tractor engine types. The study includes mechanism, carburetion, valve timing, cooling, lubrication, and ignition. Principles of operation of Diesel engine will be presented in conjunction with other portions of this course.

The study also includes training in metal work, forge, electric wiring, soldering, and welding.

One lecture and two two-hour laboratory periods each week. Credit, six semester hours.

10-11—Sheet Metal:

Special attention will be given to design, new materials, jigs and their use, machine processes, designing and finishing conduits and metal finishes. One lecture and two two-hour lab periods each week. Credit, six semester hours.

50-51—Wood Manufacturing:

This course is designed to develop skill, knowledge, and appreciation in the care and use of woodworking tools, materials, processes, and products. Practical experience will be given in concrete construction and carpentry. The student will plan, construct, and finish a number of useful articles, using hand and machine tools and a variety of materials.

One lecture and two two-hour laboratory periods each week. Credit, six semester hours.

EXTENSIVE REFRESHER COURSES

This course includes first and second year algebra, plane geometry, English grammar and composition, American history, and general science. These subjects are given to students on an individual basis and they are permitted to make as fast progress as they have the ability and willingness to achieve advancement. The purpose of this course is to prepare students for college entrance and the time that the course runs depends upon the ability and previous experience and training.

FULL TIME VOCATIONAL AND TECHNICAL COURSES

These courses will run a minimum of twenty-five hours a week, and may be completed within a maximum of nine to twelve months. Upon completion the student will be equipped for profitable employment. High school and college terminal credit will be given to students who qualify for them. (Hand tools will be furnished each veteran by the Veterans Administration).

The schedule is arranged so that veterans may enroll at any time throughout the twelve months' school year and enter these courses. Students who do not meet the entrance requirements will be classified as special and will not be eligible for graduation until the entrance requirements are met. Certificates of proficiency are awarded on completion of these courses.

101—Auto mechanics:

This course is designed to provide full time students with adequate training in: complete engine overhaul, cooling lubrication, fuel systems, valve and ignition timing, wheel alignment and brake systems. Instruction is also given in both electric and acetylene welding, soldering, and other related shop practices.

102—Radio Mechanics:

This course is designed to develop skill and knowledge of the many kinds of radio and electronics by shop practice, and circuit design to a degree that the student may obtain profitable employment.

103—Sheet Metal:

This course is designed for full time students wanting specific training in the metal trades. Industrial machines and processes are used throughout the course. Instruction emphasizes pattern layout involving parallel line, radical line and triangulation processes. Intersections and developments are thoroughly covered. Each student will be required to furnish his own hand tools.

104—Wood Manufacturing:

This course is designed to cover the basic principles of the building trades, consisting of drawing, concrete construction, carpentry, the use of the farm level, electric wiring, plumbing, skills in the use of hand and machine tools.

GRADUATES OF REGULAR SESSION, 1945-46

College Division

Bahr, James Wallace	San Pedro Sula, Honduras
Baughn, James Harrison	Greenwood
Bond, Dorothy	Wiggins
Cain, Mary Rose	Perkinston
Collins, Patricia Louisa	Biloxi
Craft, Noel Dorven	Lucedale
Denson, Glen Davis	Wiggins
Geiger, Iza Ruth	Lucedale
Horton, Nancy Lillian	New Orleans, La.
Hutchins, Clarence Edward, Jr.	Gulfport
Kirk, Vivian Katherine	Gulfport
Martin, Helen Elizabeth	Wiggins
Miller, Mariel Arcola	Lucedale
Moore, Jean Ellen	Wiggins
Moreno, Alan Frederick	Biloxi
Quave, Russell Alphonse	Biloxi
Rustin, Mary Walean	Wiggins
Shanteau Kathryn Louise	Ocean Springs
Vincent, Joy	Agricola

The Following College Student Graduated with Honors:

Vincent, Joy	Agricola
--------------------	----------

HIGH SCHOOL DIVISION

Alexander, Clark Henry	Perkinston
Baker, Lewis J.	Pascagoula
Banegas, Esther	La Lima
Baria, Paul Edwin	Hattiesburg

Baughan, Dorothy Ann	Eglin Field, Fla.
Bellande, Billye Laney	Birmingham, Ala.
Bond, Doris Louise	Perkinston
Bond, Ruby Doris	Bond
Briggs, Bennett Lawrence, Jr.	Pascagoula
Broadus, Dorothy Lee	Saucier
Broadus, Philip C., Jr.	Saucier
Broadus, Vernon H.	Wiggins
Broadus, Willie E.	Wiggins
Cobb, Helen Marie	Wiggins
Collins, Jerry Lee	Biloxi
Collins, Ora C., Jr.	Gulfport
Crawford, Jesse F.	Perkinston
Crawford, Mitchell M.	Perkinston
Cruthirds, George W.	McHenry
Edwards, Frans S.	Saucier
Ehlers, Robert E.	Moss Point
Hamilton, Edward Lee	Gulfport
Hasty, Drew, Jr.	Perkinston
Hendrix, Robert Stanley	Gulfport
Hickman, Helen Rae	McHenry
Ivey, Opal Christine	Mobile, Ala.
Kelley, Dorothy Jeanne	Ozark, Ala.
Lacy, Carl Edward	Long Beach
Lott, Delores Evon	Gulfport
Mixon, Devida Donice	Mobile, Ala.
Moran, Dantzler J.	Pass Christian
McApin, Maicoim	Gulfport
McKeehan, Nevell E.	Mobile, Ala.
Nash, Ella Ruth	Bond
O'Neal, Nolan	Perkinston
Penados, Mario	Guatemala City, Guatemala
Pepper, Lester C.	Perkinston
Porta, Pio	Pto. Barrios, Guatemala
Roberson, Willene Rebecca	Perkinston
Scruggs, Robert C.	New Orleans, La.

Shifalo, Iris Rose	Pascagoula
Stevenson, Oscar E.	Moss Point
Stewart, John W.	Gulfport
Still, David Hancell	Sardis
Thistle, Morgan E. Jr.	Long Beach
Tillotson, Rodney H.	Pascagoula
Walters, Robert L.	Ellisville
Willis, Nora Marleen	McHenry

The Following High School Students Graduated with Honors:

Bellande, Billye Laney	Birmingham, Ala.
Kelley, Dorothy Jeanne	Ozark, Ala.
Porta Pio	Pto. Barrios, Guatemala
Scruggs, Robert C.	New Orleans, La.
Thistle, Morgan E., Jr.	Long Beach
Willis, Nora Marleen	McHenry

GRADUATES OF SUMMER SESSION 1946

College Division

Holston, Earlene Eldora	Wiggins
Lee, Theresa, Aletha	Saucier
Walley, Jett W.	Perkinston

High Schol Division

Bahr, William R.	San Pedro Sula, Honduras
Barton, Charles L.	New York, N. Y.
Batson, Ann	Perkinston
Boudreaux, Leo Paul	Biloxi
Cook, Everett F.	Pascagoula

Dowling, Frank Voss	Columbia, Tenn.
Duck, Raymond Madero	Moss Point
Edwards, Patsye Rae	Saucier
Fairchild, James E.	Brooklyn
Farragut, Lyda Edwenia	Moss Point
Gilmer, Barnett Mathew	Pascagoula
Goff, George R.	Yucatan, Mexico
Goff, David W.	Yucatan, Mexico
Griffin, Helen Sara	Ocean Springs
Highsmith, Everett Howell	Gulfport
Humphreys, Leonard P.	Pensacola, Fla.
Ireland, Raymond L.	Gulfport
Ivey, Johnny M.	Pascagoula
Jacobs, Dorothea Marie	Saucier
Jermyn, Margaret	Gulfport
Kelly, Irvin L., Jr.	Pascagoula
Kemp, Betty Ann	Mobile, Ala.
Ladner, A. J.	Saucier
Lewis, Dorothy	Hattiesburg
Miller, Elmon C.	Pascagoula
Minton, John H.	Pascagoula
Peaden, David Carl	Niceville, Fla.
Russum, John Brady	Pascagoula
Ryals, Dorothy Jeannette	Pascagoula
Ryals, Nannie Doris	Pascagoula
Ryan, Theresa Pauline	Biloxi
Saucier, Billy	Biloxi
Savage, Womack Horace	Pascagoula
Slade, Lindburg	Gulfport
Stonecypher, John Bell	Lucedale
Summerlin, Doss, Jr.	Biloxi
Tainter, Shirley Jo Ann	Mobile, Ala.
Turner, Ida Mae	Pascagoula

Van Horn, M. Dreux	Pass Christian
Wheeler, Joyce Marie	Mobile, Ala.
Wilkerson, Buford	Gulfport
Willemoes, Peter K.	Wiggins
Wilson, Darrell E.	Pascagoula

The Following High School Students Graduated with Honors:

Batson, Ann	Perkinston
Van Horn, M. Dreux	Pass Christian

ROSTER OF STUDENTS

SUMMER SESSION 1946

Adams, Lola	H. S. Jr.	Pass Christian
Aeppli, Mary Rubina	H. S. Jr.	Lucedale
Alexander, Norris	H. S. Jr.	Wiggins
Alexander, Sydney E.	Special	Perkinston
Allen, James	H. S. Jr.	Gulfport
Alvarado, Raul	H. S. Jr.	C. Flores, Petin, Guatemala
Attaya, Robert	Col. Fresh.	Gulfport
Bahr, William	Col. Fresh.	San Pedro Sula, Honduras, C. A.
Baker, John	H. S. Soph.	Pascagoula
Baker, Lewis	Col. Fresh.	Pascagoula
Baker, Lillian	H. S. Sr.	Mississippi City
Baker, Russell	Special	Pascagoula
Balius, Rudolph	H. S. Jr.	Biloxi
Banegas, Esther	Col. Fresh.	La Lima, Honduras, C. A.
Barrett, Albert	H. S. Fresh.	Gulfport
Barton Charles	Col. Fresh.	Gulfport
Batson, Ann	H. S. Sr.	Perkinston
Batson, Elizabeth	H. S. Jr.	Wiggins
Blackwell, Robert	H. S. Jr.	Perkinston
Bloom, Carl	H. S. Jr.	Gulfport
Bond, Betty Ruth	H. S. Jr.	Perkinston
Boudreaux, Leo P.	H. S. Jr.	Biloxi
Bourne, Hilton	Col. Soph.	Gulfport
Bragg, Oscar R., Jr.	Col. Fresh.	Bay St. Louis
Branton, Billie Jean	H. S. Jr.	Gulfport
Broadus, Dixie	Col. Soph.	Saucier
Broadus, Marianne	H. S. Jr.	Perkinston
Broadus, Roddie Jean	H. S. Fresh.	Perkinston
Broadus, Vernon	Col. Fresh.	Wiggins
Broadus, Wilma	Col. Soph.	McHenry
Brodnax, Frances	Col. Fresh.	Pascagoula
Brodnax, Joel	Col. Fresh.	Pascagoula
Bourne, Geraldine	H. S. Fresh.	Perkinston
Brown, Ralph	Special	Gulfport
Burgess, Ernest	Col. Fresh.	Gulfport
Byrd, Emma Jean	H. S. Fresh.	Perkinston
Byrd, Talmadge	H. S. Soph.	Lumberton
Byrne, Patsy	H. S. Fresh.	Wiggins
Byrns, Billy Joe	Special	Wiggins
Caldwell, John	H. S. Jr.	Lucedale

Carter, Dorothy Jane	H. S. Sr.	Handsboro
Clayton, Opal	Col. Fresh.	Perkinston
Coker, Edith Faye	H. S. Fresh.	Perkinston
Cole, Marion	Special	Pascagoula
Coleman, Alfred	H. S. Jr.	Lucedale
Coleman, Wilbert	H. S. Sr.	Lucedale
Collins, Ora C.	Col. Fresh.	Gulfport
Cook, Everett	Col. Soph.	Pascagoula
Cook, James	Col. Fresh.	Wiggins
Crawford, Mitchell	Col. Fresh.	Perkinston
Cruthirds, George	Col. Fresh.	McHenry
Dale, Edison	Col. Fresh.	Wiggins
Dale, Teddy	H. S. Jr.	Wiggins
Davis, John A.	Col. Fresh.	Moss Point
De Forrest, Willard	Col. Fresh.	Pascagoula
Ditworth, Beulah Mae	H. S. Jr.	Pascagoula
Duck, Raymond	H. S. Sr.	Moss Point
Dueitt, Owen D.	H. S. Soph.	Leakesville
Dunnam, W. Warren	Col. Fresh.	Sulphur, La.
Edwards, Patsye	H. S. Sr.	Saucier
Ehlers, Robert	Col. Fresh.	Moss Point
Ellsberry, Minnie	H. S. Fresh.	Perkinston
Etzold, David	Col. Fresh.	Gulfport
Eubanks, Elaine	Col. Fresh.	Lucedale
Evans, Calvin	Special	Pascagoula
Evans, Houston	Special	Perkinston
Evans, Leondas	Special	Perkinston
Faggard, Louis	Col. Fresh.	Pascagoula
Fairchild, James	H. S. Sr.	Meridian
Farragut, Edward	H. S. Sr.	Moss Point
Farragut, Lyda	H. S. Sr.	Moss Point
Felts, Evelyn	H. S. Jr.	Pascagoula
Ferrell, Shirley	Col. Fresh.	Wiggins
Gill, Pascol	Col. Fresh.	Saucier
Gilis, Elizabeth	Col. Soph.	Brooklyn
Gilmer, Barnett	H. S. Sr.	Pascagoula
Goff, David	Col. Soph.	Merida, Yucatan
Goff, George	H. S. Sr.	Merida, Yucatan
Gonsoulin, Floyd	Col. Fresh.	Biloxi
Griffin, Helen	H. S. Sr.	Ocean Springs
Gutierrez, Henry	Col. Fresh.	Guatemala City, Guatemala
Hall, Essie Mae	Col. Soph.	Perkinston
Hall, Gloria	Col. Fresh.	Wiggins

Hall, Margaret	H. S. Jr.	Wiggins
Hasty, Drew, Jr.	Col. Fresh.	Perkinston
Hatten, Mildred	Special	Perkinston
Hester, Clark O.	Col. Fresh.	Perkinston
Hickman, Juanita	H. S. Soph.	McHenry
Highsmith, Berner	H. S. Fresh.	Gulfport
Highsmith, Everett	Col. Fresh.	Gulfport
Hinton, William H.	Col. Fresh.	Wiggins
Hitt, Lorraine	Col. Fresh.	Gulfport
Hockenjos, Charles, Jr.	Special	Long Beach
Holleman, Lorraine	H. S. Jr.	Wiggins
Holston, Earlene	Col. Soph.	Wiggins
Holston, Tillman	H. S. Jr.	Waynesboro
Holston, Wilton	H. S. Jr.	Wiggins
Humphreys, Leonard	H. S. Jr.	Pensacola
Ireland, Raymond	H. S. Sr.	Gulfport
Ivey, Johnny	H. S. Sr.	Pascagoula
Jacobs, Dorothea	H. S. Saucier Sr.	Saucier
Jermyn, Margaret	H. S. Sr.	Gulfport
Johnson, Earl	Col. Fresh.	Saucier
Johnson, Frank	Special	Bond
Johnson, John	H. S. Jr.	Saucier
Jones, George	Col. Fresh.	Wiggins
Kelly, Irvin L., Jr.	H. S. Soph.	Pascagoula
Kemp, Betty Ann	H. S. Sr.	Mobile, Ala.
Kilpatrick, Joan	H. S. Jr.	Pascagoula
Knight, James	Special	Brooklyn
Krohn, Allen	H. S. Soph.	Wiggins
Ladner, A. J.	H. S. Sr.	Saucier
Ladner, Edward	H. S. Fresh.	Perkinston
Landrum, Carrol	Col. Fresh.	Mize
Langley, Durwood	Col. Fresh.	Biloxi
Lawson, Marie	H. S. Fresh.	Wiggins
Lawson, Jane	H. S. Sr.	Wiggins
Lee, D. Y.	Special	Brooklyn
Lee, Theresa	Col. Soph.	Saucier
Leeton, Robert	Col. Fresh.	Gulfport
Lewis, Dorothy	H. S. Sr.	Hattiesburg
Little, Edgar	H. S. Jr.	Handsboro
Locke, Jesse	Col. Soph.	Wiggins
Lott, Cecil	Col. Fresh.	Wiggins
Luffey, John	Col. Soph.	Monroe, La.
Mabry Mary	H. S. Jr.	Wiggins

Madden, Buddy	Col. Fresh.	Wiggins
Maras, Dan	Col. Fresh.	Biloxi
Marsh, Myrt	Col. Soph.	Handsboro
Martin, Hardy	Col. Fresh.	Wiggins
Maxey, Charles	Col. Soph.	Gulfport
Maxwell, Albert	H. S. Soph.	Ocean Springs
Milke, Fernando	Special	Merida, Yucatan
Miller, Ellsman	Special	Pascagoula
Minton, John	H. S. Jr.	Pascagoula
Mizell, Billy Ray	H. S. Soph.	McLain
Moran, Dantzler	Col. Fresh.	Pass Christian
Morris, Columbus	Special	Wiggins
Murray, Ouida	H. S. Soph.	Wiggins
McDaniel, Robert	Special	Biloxi
McElmurray, Charles	Col. Fresh.	Gulfport
McGuire, J. C., Jr.	Col. Fresh.	Saucier
McKeehan, Nevell	Col. Fresh.	Mobile, Ala.
Newsom, Dianne	H. S. Sr.	Biloxi
O'Neal, Ardain	Col. Fresh.	Gulfport
O'Neal, Jed	H. S. Fresh.	Perkinston
Parker, Hugh Aubrey	Special	Gulfport
Peaden, David	H. S. Sr.	Niceville, Fla.
Penados, Mario	Col. Fresh.	Guatemala City, Guatemala
Pepper, Lester	Special	Perkinston
Perette, James	Special	Saucier
Pitalo, Slaine	Col. Fresh.	Biloxi
Pitalo, John	Col. Fresh.	Biloxi
Porta, Pio	Col. Fresh.	Puerto Barrios, Guatemala
Rea, John	Col. Fresh.	Gulfport
Redmond, Roscoe	Col. Fresh.	Perkinston
Richards, Ouida	H. S. Jr.	Pascagoula
Roberts, Ellis	H. S. Soph.	Gulfport
Rouse, John L.	H. S. Jr.	Pascagoula
Rouse, Lamont	Col. Fresh.	Saucier
Royster, Francis, Jr.	H. S. Jr.	Biloxi
Russum, John	H. S. Fresh.	Pascagoula
Russum, Robert	H. S. Soph.	Pascagoula
Ryals, Doris	H. S. Sr.	Pascagoula
Ryan, Theresa	H. S. Sr.	Biloxi
Santa Cruz, Lee	Col. Fresh.	Biloxi
Saucier, Billy	H. S. Jr.	Biloxi
Saucier, Evelyn	Col. Soph.	Saucier

Saucier, William	Col. Fresh.	Saucier
Savage, Womack	H. S. Sr.	Pascagoula
Scarborough, Homer	Special	Lyman
Scarborough, Leo	Col. Fresh.	Gulfport
Seidule, George	Col. Fresh.	Perkinston
Sepich, Billie	Col. Soph.	Mississippi City
Shattles, Herschel	Special	Brooklyn
Skinner, George	Special	Lucedale
Slade, Leigh	H. S. Jr.	Purvis
Slade, Lindbergh	H. S. Sr.	Gulfport
Smalley, Jimmie	Col. Fresh.	Perkinston
Smith, Lewis	H. S. Fresh.	Wiggins
Smith, Mildred	Col. Fresh.	Gulfport
Starr, William Henry	Special	Gulfport
Stevenson, Edward	Col. Fresh.	Gulfport
Stevenson, Oscar	Special	Moss Point
Stonecypher, John	H. S. Jr.	Perkinston
Stringer, Elizabeth	Col. Soph.	Gulfport
Summerlin, Doss	Special	Biloxi
Swetman, Flora	H. S. Soph.	Biloxi
Tainter, Shirley Ann	H. S. Sr.	Mobile, Ala.
Tisdale, Robby Jo	H. S. Sr.	Mississippi City
Turner, Ida Mae	H. S. Sr.	Pascagoula
Turner, Roland	H. S. Jr.	Richton
Van Horn, M. Dreux	H. S. Sr.	Pass Christian
Vincent, Donald	H. S. Soph.	Agricola
Wade, George	Col. Fresh.	Gulfport
Walley, J. W.	Col. Soph.	Perkinston
Waldbart, Harry	Special	Mississippi City
Walters, Margaret	H. S. Sr.	Gulfport
Walters, Robert	Col. Fresh.	Laurel
Weisinger, Jo Anne	H. S. Jr.	Lucedale
Wheeler, Joy	H. S. Sr.	Mobile, Ala.
White, Harold	Col. Fresh.	Wiggins
White, Jack	Col. Fresh.	Ocean Springs
White, James	Col. Fresh.	Wiggins
Wilkerson, Buford	Special	Gulfport
Wilkerson, John F.	Special	Gulfport
Willemoes, Peter	H. S. Sr.	Wiggins
Williams, Elroy	H. S. Fresh.	Perkinston
Williams, Jack	Col. Fresh.	Wiggins
Wilson, Derrell	H. S. Jr.	Pascagoula
Wilson, Harry	Col. Fresh.	Handsboro
Wilson, Winfred	Col. Fresh.	Handsboro
Wirth, Edna	Special	Gulfport

Wirth, Harold	Col. Fresh.	Gulfport
Woollett, Albert	Col. Fresh.	Oxford

REGULAR SESSION 1946-47

Adams, Lola Ruth	H. S. Sr.	Pass Christian
Alexander, Clark Henry	Col. Fr.	Perkinston
Allen, James D.	H. S. Sr.	Gulfport
Alleman, Pete	Col. Fr.	Gulfport
Alley, Willie	Special	Gulfport
Alvarado, Raul	H. S. Jr.	Flores, Peten, Guatemala
Anderson, Vaden Price	H. S. Sr.	Perkinston
Anderson, James Louis	Col. Fr.	Gulfport
Anderson, Joe	Col. Fr.	Biloxi
Andrews, James Thomas	H. S. Sr.	Ocean Springs
Appleton, Maudie	Col. Fr.	Sardis
Appleton, William	Col. Fr.	Sardis
Asplin, Mark James	Col. Fr.	Havre, Montana
Astleford, Gilda Amelia	Col. Fr.	Biloxi
Atchison, Edgie Louise	H. S. Jr.	Bond
Atkinson, James Robert	Col. Fr.	Memphis, Tenn.
Attaya, Robert	Col. Fr.	Gulfport
Aufdemorte, Bruce	Special	Biloxi
Aufdemorte, Frank Louis	Col. Fr.	Biloxi

Backstrom, Thomas Shelby	Col. Soph.	Leaf
Bahr, William Robert	Col. Fr.	Rep. of Honduras
Baker, Lillian Frances	Col. Fr.	Gulfport
Baker, Lewis	Col. Fr.	Pascagoula
Baker, Russell	Special	Pascagoula
Ball, Gerald	H. S. Sr.	Gulfport
Barlard, William Robert	Col. Fr.	Selma, Ala.
Banegas, Ester	Col. Fr.	La Lima, Honduras
Barnes, Jeanne Ellen	H. S. Sr.	Pascagoula
Barton, Charles LeRoy	Col. Fr.	Gulfport
Batson, Weitha Ann	Col. Fr.	Perkinston
Batson, Fredna E.	Col. Soph.	Wiggins
Batson, Wentz Atkin	Col. Fr.	Perkinston
Batson, William Neville	Col. Fr.	Perkinston
Batty, Eric Saxon	Col. Fr.	New Orleans, La.
Baxter, Carlene	Col. Soph.	Perkinston
Baxter, Clyde	Special	Wiggins
Beaugez, Donald	Col. Fr.	Ocean Springs
Beaugez, Eugene	Col. Fr.	Ocean Springs
Beaugez, Ralph Michael, Jr.	H. S. Sr.	Ocean Springs
Beeson, Aubrey Edward	Col. Fr.	Long Beach
Bellande, Mary Blair	H. S. Sr.	Gulfport

Benton, Donald	Col. Fr.	Gulfport
Berry, Billy Ross	Col. Soph.	Lucedale
Bilbo, La Joyce	Col. Fr.	Gulfport
Bishop, John Thomas	Col. Fr.	Pascagoula
Black, Aubrey	Special	Bond
Black, Stanley	H. S. Jr.	Bond
Blackwell, Duain	Col. Fr.	Pascagoula
Blackwell, Eddie	Col. Fr.	Pascagoula
Blackwell, Noel Weldon	H. S. Jr.	Saucier
Blackwell, Robert R.	H. S. Sr.	Perkinston
Blackwood, Charles Austin	Col. Fr.	Gulfport
Blakeney, Charles B.	Col. Fr.	Taylorville
Bodden, Max McIlwain	H. S. Jr.	Pascagoula
Bolen, Leon Henry, Jr.	Col. Fr.	New Orleans, La.
Bond, Andrew John	H. S. Jr.	Gautier
Bond, Angie Willow	H. S. Jr.	Perkinston
Bond, Bernice	H. S. Jr.	Bond
Bond, Betty Ruth	H. S. Sr.	Perkinston
Bond, Donald	H. S. Sr.	Perkinston
Bond, H. R.	H. S. Sr.	Perkinston
Bond, John	Col. Fr.	Perkinston
Bond, Odelle Eugene	Col. Soph.	Perkinston
Bonge, Lyle	Col. Fr.	Biloxi
Boone, Douglas	H. S. Jr.	Mobile, Ala.
Boudreaux, Leo P.	Col. Fr.	Biloxi
Bourne, Geraldine	Col. Fr.	Wiggins
Bourne, Hilton	Col. Soph.	Gulfport
Bradley, Carl Raymond	H. S. Sr.	Pascagoula
Bragg, Harold Eugene	Col. Fr.	Bay St. Louis
Bragg, Oscar Roe, Jr.	Col. Soph.	Bay St. Louis
Breal, Floyd Lawrence	Col. Fr.	Biloxi
Breal, Henry Lawrence	Col. Fr.	Biloxi
Breland, Dorothy Rae	H. S. Sr.	Perkinston
Breland, Norris Glen	Col. Fr.	Wiggins
Bret, Daniel Ralph	Col. Fr.	Panama City, Fla.
Briggs, Ben Lawrence, Jr.	Col. Fr.	Pascagoula
Broadus, Dixie Elaine	Col. Soph.	Saucier
Broadus, Earl	Col. Fr.	Perkinston
Broadus, Wilma Wyatt	Col. Soph.	McHenry
Brooks, Anna Lene	Col. Soph.	Lucedale
Brown, Lilith Lillian	Col. Fr.	Bendale
Brown, Norman	Col. Fr.	Carriere
Bryant, Joe	Col. Fr.	Pascagoula
Burch, David Odell	Col. Fr.	Pensacola, Fla.
Burdine, Robert	Special	Lawrenceburg, Tenn.
Burgess, Ernest E.	Col. Fr.	Gulfport
Busey, Ruth	H. S. Jr.	Pensacola, Fla.
Byrd, John Erwin	Col. Fr.	Howison

Byrd, Lionel	Col. Fr.	Biloxi
Byrd, Nelwyn Maude	Col. Fr.	Pascagoula
Byrd, Verlon	Col. Fr.	Howison

Cain, Charles G.	Col. Fr.	Pensacola, Fla.
Caldwell, Billye Rayburn	Col. Fr.	Sardis
Caldwell, James Lawrence	Col. Soph.	Como
Caldwell, John Thomas	H. S. Sr.	Lucedale
Camariotes, Sam	Col. Fr.	Gulfport
Campbell, Jeanne Marilyn	Col. Soph.	Ocean Springs
Capers, Archie Clifton	Col. Fr.	Gulfport
Carlin, Jarry	Special	Bond
Champeaux, Kenneth Julian	Col. Fr.	Biloxi
Chaudron, Ralph Leon	Col. Fr.	Pensacola, Fla.
Clark, Arthur	Col. Fr.	Guatemala City, Guatemala
Clark, Murray Patrick	Col. Fr.	Pascagoula
Clark, Stanley Ray	H. S. Jr.	Gulfport
Clayton, Opal Mae	Col. Soph.	Perkinston
Clem, Marvin	Col. Fr.	Athens, Ala.
Clinton, Gerald	Special	Hattiesburg
Cobb, Jewel	Special	Wiggins
Coleman, Anna	H. S. Sr.	Fairhope, Ala.
Coleman, Wealthia M.	H. S. Jr.	Biloxi
Conn, Rita Louise	Col. Soph.	Gulfport
Conrad, Harold Nixon	Col. Fr.	Panama City, Fla.
Cook, Eddie	Col. Fr.	Wiggins
Cook, Everett Franklin	Col. Fr.	Pascagoula
Cook, Gerald Van	Col. Fr.	Columbia
Cook, James W.	Col. Soph.	Wiggins
Cook, James Wesley	Col. Fr.	Pascagoula
Cook, Julia Marie	Col. Fr.	Biloxi
Cook, Lester C.	Col. Fr.	Bay St. Louis
Cook, Rosa Hamilton	Col. Soph.	Pascagoula
Cooley, Ellene	Col. Soph.	Lucedale
Cordle, Jr., Frank	Col. Soph.	Pensacola, Fla.
Cruthirds, George P.	Col. Fr.	Ocean Springs
Cruthirds, George W.	Col. Fr.	McHenry
Cuave, Albert Gale	H. S. Jr.	Perkinston
Cuevas, Vernon E.	Col. Fr.	Gulfport
Cullen, Winston K.	Col. Fr.	Gulfport
Cumbest, James Elvis	Col. Fr.	Pascagoula
Cumbest, Ralph Owen	Col. Fr.	Pascagoula
Curtis, Justine	Col. Fr.	Biloxi

Dale, Edison Alfred	Col. Soph.	Wiggins
Dana, Richard Lawery	H. S. Sr.	Gulfport
Daniels, Harry Jackson	Col. Fr.	Foxworth

Dauro, Vincent Anthony	Col. Soph.	Long Beach
David, Margaret	Col. Fr.	Perkinston
Davis, Betty Joe	H. S. Jr.	Perkinston
Davis, Curtis	Col. Fr.	Ocean Springs
Davis, John A.	Col. Soph.	Moss Point
Davis, Spencer P.	Col. Fr.	St. Andrew, Fla.
Davis, William Elvin	Col. Fr.	Pensacola, Fla.
Dearman, Elton	Special	Brooklyn
Dedeaux, C. J.	Special	Perkinston
Dedeaux, Homer Ray	H. S. Jr.	Gulfport
Dees, Bobbie Jean	H. S. Jr.	Perkinston
Deforrest, Willard Randoljh	Col. Soph.	Pascagoula
Delmas, Louis Bernard	Col. Fr.	Moss Point
Demoruelle, John C.	H. S. Sr.	Biloxi
Denning, Everette K.	H. S. Sr.	Saucier
Deschamps, Melvin Thomas	Col. Soph.	New Orleans, La.
Dollar, Richard	Col. Fr.	Athens, Ala.
D'Olive, Gloria	Special	Perkinston
Dowling, Hugh R.	Col. Fr.	Biloxi
DuBois, Margaret Allyne	H. S. Sr.	Gulfport
Dubuisson, Donald Joseph	Col. Fr.	Gulfport
Duffie, Charles Everett	Col. Fr.	Biloxi
Duffie, Joseph James	Col. Fr.	Biloxi
Dunnam, William W.	Col. Soph.	Hattiesburg
Dye, Albert R.	Col. Fr.	Pensacola, Fla.

Edwards, Claude Earl	Col. Fr.	Perkinston
Edwards, James Keefe	Col. Fr.	New Orleans, La.
Edwards, Mary Ruth	H. S. Jr.	Perkinston
Edwards, Patsye Rae	Col. Fr.	Saucier
Ehlers, Robert E.	Col. Fr.	Moss Point
Etzold, David Julius	Col. Soph.	Gulfport
Evans, Edward	H. S. Jr.	Perkinston
Evans, Curtis Forrest	H. S. Jr.	Wiggins

Faggard, Louis Calvin	Col. Fr.	Pascagoula
Fairchild, James Everett	Col. Fr.	Meridian
Fairley, James E.	Col. Fr.	Saucier
Fairley, James L.	Col. Fr.	Biloxi
Fairley, Lynn Inman	Col. Fr.	Biloxi
Falkenberry, Jane	H. S. Sr.	Mobile, Ala.
Farragut, James L.	Col. Fr.	Moss Point
Farragut, Oscar Floyd	Col. Fr.	Pascagoula
Ferrell, Shirley	Col. Fr.	Wiggins
Flanagan, Jimmy	H. S. Sr.	Pascagoula
Forte, Joe Ray	Col. Fr.	Hattiesburg
Fountain, Theodore Joseph	H. S. Sr.	Biloxi

Fountain, Wallace Martin	H. S. Sr.	Biloxi
Frederic, Francis	Col. Fr.	Pascagoula
Fries, Thomas James	Col. Fr.	Purvis
Frith, William	H. S. Jr.	Lyman
Frith, Wren McKinnon	Col. Fr.	Lyman
Furr, Randle E.	Col. Soph.	Gulfport
Furr, Royce C.	Col. Fr.	Pascagoula

Gabrie, Yulia	Col. Fr.	Honduras, C. A.
Gautier, Newton Perry	Col. Fr.	Gautier
Geiger, Dorothy Julia	Col. Soph.	Lucedale
Gill, Pascol	Col. Fr.	Saucier
Gilmer, Barnett	Col. Fr.	Pascagoula
Goff, Bobby Council	Col. Fr.	McLain
Goff, John N.	Col. Fr.	Pascagoula
Goff, Sherwood	Col. Fr.	McLain
Goff, William Joe	Col. Fr.	Gulfport
Goff, Willie Eloise	Col. Soph.	Ocean Springs
Gonsoulin, Floyd N.	Col. Fr.	Biloxi
Greenough, James Arthur	Col. Fr.	Escatawpa
Greenwood, Robert Ray	Special	Pascagoula
Griffin, Helen	Col. Fr.	Ocean Springs
Gruich, Mitchell J.	Col. Fr.	Biloxi
Guillin, Iris	Col. Fr.	Guatemala, C. A.
Guterrez, Henry	Col. Fr.	Guatemala, C. A.

Haab, Milton Joseph	Col. Fr.	Biloxi
Hale, Richard Nelson	Col. Fr.	Pascagoula
Hall, Dan C.	Col. Soph.	Wiggins
Hall, Essie Mae	Col. Soph.	Perkinston
Hall, Gloria	Col. Fr.	Wiggins
Hamilton, William Hermes	Col. Fr.	Moss Point
Harthcock, Herbert R.	Col. Soph.	Pascagoula
Harwell, Gladys Pearl	Col. Soph.	Quitman
Hasty, Drew, Jr.	Col. Soph.	Perkinston
Hasty, Myra Grace	Col. Soph.	Perkinston
Hatten Abney	Col. Fr.	Perkinston
Hatten, Kenneth	Col. Fr.	Lyman
Hatten, Willie	Col. Fr.	Wiggins
Havard, Nora Louise	Col. Soph.	Lucedale
Havens, Prentis	Col. Fr.	Perkinston
Hawley, Doris Faye	Col. Soph.	Ocean Springs
Haynes, B. J., Jr.	Col. Fr.	Mendenhall
Hevert, Ivy Joseph	Col. Fr.	Biloxi
Hegwood, Jerome Kerry	Col. Fr.	Perkinston
Helms, Ray Clifford	Col. Fr.	Milton, Fla.
Henley, Gerald David	H. S. Sr.	Pascagoula
Hester, Clark O.	Col. Soph.	Perkinston

Hewlett, Duell	H. S. Jr.	Pascagoula
Hewlett, Emmalou	Col. Soph.	Pascagoula
Hickman, Grace	Col. Fr.	Saucier
Hickman, Ivy Davis	H. S. Jr.	Perkinston
Hightower, James William	Col. Fr.	New Orleans, La.
Hinton, William Hayes	Col. Soph.	Wiggins
Hitt, Doris Lorraine	Col. Fr.	Gulfport
Hitt, James	Special	Gulfport
Holcomb, Eugene S.	Col. Fr.	Gulfport
Holland, Arthur Darwin	Col. Fr.	Lucedale
Holland, Donnis Elton	Col. Fr.	Lucedale
Hoven, Jimmie Earle	Col. Fr.	Lucedale
Hover, Nora Mae	H. S. Jr.	McHenry
Huckabee, Betty Chambers	Col. Soph.	Mobile, Ala.
Humphrey, John Murray	Col. Fr.	Biloxi
Humphreys, Leonard P.	Col. Fr.	Pensacola, Fla.
Humphrey, Robert	Col. Fr.	Bude

Ireland, Raymond Lloyd	Col. Fr.	Gulfport
Ivy, Johnny Mack	Col. Fr.	Pascagoula

Jackson, Wayne Eugene	Col. Fr.	Purvis
Jacobs, Dorothea Marie	Col. Fr.	Saucier
Janus, John T.	Col. Soph.	Biloxi
Janus, Stanley J.	H. S. Jr.	Biloxi
Jenkins, Marshall Lee	H. S. Jr.	Gulfport
Jermyn, Patrick E.	H. S. Sr.	Mississippi City
Johnson, D. Laine	Col. Fr.	Saucier
Johnson, Earl Brewer	Col. Soph.	Saucier
Johnson, Frank	Special	Bond
Johnson, Glendon E.	Col. Fr.	Saucier
Johnson, Henry	Col. Fr.	Saucier
Johnson, Johnny K.	H. S. Sr.	Saucier
Johnson, Kathlyn Beryl	Col. Fr.	Tylertown
Johnson, Milton H.	Col. Fr.	Panama City, Fla.
Jones, George W.	Col. Soph.	Wiggins
Jones, Marshall	Special	Pascagoula
Jordan, Courtney	Col. Fr.	Ledeshore

Keel, Murray Elbert	Col. Fr.	De Lisle
Kelly, Jeanne	Col. Soph.	Ozark, Ala.
Kelly, Carmen Clyde	Col. Fr.	Pascagoula
Kennedy, William Lee, Jr.	Col. Fr.	Gulfport
King, Joseph Ellise	Col. Fr.	Lyman
Kislanko, James William	Col. Fr.	Wiggins
Knight, James	Special	Brooklyn
Knitter, Alfred C.	Col. Fr.	Biloxi
Konzelman, John Emile	Col. Fr.	Biloxi

Lacy, Paul, Jr.	Col. Fr.	Gulfport
Lacy, Thomas Edwin	Col. Soph.	Long Beach
Ladner, A. J.	Col. Fr.	Saucier
Ladner, Eldon	Col. Fr.	Perkinston
Ladner, Emmett John	Col. Fr.	De Lisle
Ladner, Erma Rita	Col. Fr.	Pass Christian
Ladner, J. S.	Col. Soph.	Saucier
Ladner, Floyd Norbert	Col. Fr.	De Lisle
Larner, Jimmy	H. S. Jr.	Perkinston
Ladner, Robert Earl	H. S. Sr.	Perkinston
Ladner, Robert Lawrence	Col. Fr.	Saucier
Ladner, Tony James, Jr.	Col. Fr.	Pass Christian
Ladner, Willborn H.	Col. Fr.	Perkinston
Laird, Ann Immogene	H. S. Jr.	Lyman
Landrum, C. F.	Col. Fr.	Taylorville
Landrum, Glenn K.	Col. Fr.	Gulfport
Langley, Durwood B.	Col. Fr.	Biloxi
Lawson, Roosevelt E.	H. S. Sr.	Bond
Lee, D. C.	Special	Brooklyn
Lee, Frank Edwin	Col. Fr.	Wiggins
Leeton, Robert	Col. Soph.	Gulfport
Lefever, Stanley Calvin	Col. Fr.	Gulfport
Lemm, Ernest A., Jr.	Col. Fr.	Gulfport
Lewis, Dorothy	Col. Fr.	Petal
Lewis, Robert T.	Col. Fr.	Saucier
Lewis, Tully Gene	Col. Fr.	Pachute
Lightner, Louis Arnold	Col. Fr.	Biloxi
Lightsev, Owen R.	Col. Fr.	Biloxi
Little, Edgar Poe	H. S. Sr.	Handsboro
Locke, Jesse C.	Col. Soph.	Wiggins
Locklin, Claude E.	Col. Fr.	Milton, Fla.
Locklin, Oscar J.	Col. Fr.	Milton, Fla.
Lovelady, Terry	Col. Fr.	Biloxi
Lovett, Charles	Col. Fr.	Gulfport
Ludlow, Mary Carolyn	H. S. Jr.	Biloxi
Ludlow, Zada Griffie	H. S. Jr.	Biloxi
McAlpin, Malcolm	Col. Fr.	Gulfport
McDaniels, Billie M.	Col. Fr.	Ocean Springs
McDonald, William Emmett	Col. Soph.	Gulfport
McElmurray, Calvin H.	Col. Fr.	Gulfport
McElmurray, Charles B.	Col. Fr.	Silver City
McGuire, J. C.	Col. Fr.	Saucier
McHenry, Gordon	Col. Fr.	McHenry
McKay, Ray Parnell	Col. Fr.	Pass Christian
McKeehan, Nevell	Col. Fr.	Mobile, Ala.
McLeod, Robert Melvin	Col. Fr.	Wiggins
McQueen, Daniel A.	Col. Fr.	Pascagoula

Mabry, Mary Bell	H. S. Sr.	Wiggins
Madden, Buddy	Col. Soph.	Wiggins
Mallette, Marland	Col. Soph.	Ocean Springs
Maples, William Stone	Col. Fr.	Perkinston
Maras, Charles Carl	Col. Fr.	Biloxi
Maras, Daniel Frank	Col. Soph.	Biloxi
Marchetich, Carl Raymond	Col. Fr.	DeLisle
Marsh, Myrt	Col. Soph.	Handsboro
Martin, Hardy C.	Col. Soph.	Wiggins
Maxey, Charles William	Col. Soph.	Gulfport
Miller, Ellman C.	Col. Fr.	Pascagoula
Miller, Emory Jack	Col. Fr.	Wiggins
Millergreen, Clifford C.	Col. Fr.	Wewahitchka, Fla.
Mitchell, Margie Deen	Col. Fr.	Perkinston
Mizell, Carl Douglas	Col. Fr.	Lucedale
Moffett, Reba	Col. Fr.	Lucedale
Moffett, Winfred	Col. Soph.	Lucedale
Mohler, Robert Gerald	Col. Soph.	Ocean Springs
Moorman, James E.	H. S. Jr.	Lyman
Moran, Dantzer L.	Col. Fr.	Pass Christian
Morris, Columbus	Special	Wiggins
Murphy, Gerald Lagrande	Col. Soph.	Petal
Murray, Annie Elizabeth	Col. Fr.	Pascagoula
Murray, James Thomas	H. S. Jr.	Purvis
Murray, Ouida	H. S. Jr.	Wiggins
Neilson, Laurits C.	Special	Pascagoula
Newman, Andrew Johnson	H. S. Jr.	Pascagoula
Newman, Lois	H. S. Jr.	Bond
Neyland, Barbara Ruth	H. S. Sr.	Centerville
Nolet, Revis David	Col. Fr.	Pass Christian
Nolf, Austin C.	Col. Fr.	Ocean Springs
O'Neal, Adrian	Col. Soph.	Gulfport
O'Neal, Floye	H. S. Jr.	Perkinston
O'Neal, Juanita Elva	Col. Fr.	Saucier
O'Neal, Nolan	Col. Fr.	Perkinston
O'Neal, Theda Mereline	Col. Fr.	Saucier
O'Neal, Thorne Joyce	H. S. Sr.	Perkinston
Ouille, H. J.	Col. Fr.	Biloxi
Overton, Betty Lois	Col. Fr.	Gulfport
Overstreet, Lois	H. S. Jr.	McHenry
Palm, Dorothy Elinor	Col. Fr.	Biloxi
Parker, Arthur H.	Col. Fr.	Mississippi City
Parker, Delores Ann	H. S. Sr.	Hattiesburg
Parker, Hugh Aubrey	Col. Fr.	Gulfport
Parker, James Doyle	Col. Fr.	Millerville, Fla.
Parker, John Wilford	Col. Fr.	Pascagoula

Patterson, Walter Jack	Col. Soph.	Perkinston
Payne, David Le Bonon	Col. Fr.	Gulfport
Pearson, William Gordon	Col. Fr.	Mississippi City
Penados, Mario	Col. Fr.	Guatemala City, Guatemala
Pepper, Lester C.	Col. Fr.	Perkinston
Peters, Virginia Lea	H. S. Jr.	Wiggins
Peterson, Joseph Elmer	Col. Fr.	Lyman
Phillips, Alton Burt	Col. Fr.	Mississippi City
Pickich, Shirley Rose	Col. Soph.	Biloxi
Pierce, Albert James, Jr.	Col. Fr.	Handsboro
Pierce, William W., Jr.	Col. Fr.	Moss Point
Pilgrim, Dorothy Jane	Col. Fr.	Lucedale
Pitalo, Alex Mike	Col. Fr.	Biloxi
Pitalo, Elaine	Special	Biloxi
Pitalo, John	Col. Soph.	Biloxi
Pitalo, Nick	Col. Fr.	Biloxi
Poolson, Francis Gerard	Col. Fr.	Bay St. Louis
Pope, Fay	H. S. Sr.	Lucedale
Pugh, Willie Ray	Col. Fr.	Lucedale

Quave, Artie W.	Col. Fr.	Gulfport
Quave, Chester R.	Col. Fr.	Gulfport
Quigley, Bill	Col. Fr.	Biloxi
Quigley, Edward John	Col. Fr.	Biloxi

Ramsay, Fatie Belle	Col. Fr.	Pascagoula
Randle, Richmond Carl, Jr.	Col. Fr.	Gulfport
Rayburn, Welton R.	Col. Fr.	Wiggins
Rea, John Edwin	Col. Fr.	Gulfport
Redmond, John	Col. Fr.	Perkinston
Redmond, Roscoe F.	Col. Fr.	Perkinston
Reeves, Thomas L.	Col. Fr.	Lyman
Reguera, Thomas	Col. Fr.	New Orleans, La.
Richards, Patricia Anne	Col. Soph.	Ocean Springs
Richter, Margaret Krohn	Col. Fr.	Biloxi
Roberts, Edwin Jack	Col. Fr.	Gulfport
Roberson, Willene Rebecca	Col. Fr.	Perkinston
Roberts, Maryon Ruth	Col. Soph.	Ocean Springs
Robison, Mack	Col. Fr.	Baker, Fla.
Rogers, Earl Andrew	H. S. Jr.	Perkinston
Roland, Donald Lain	Col. Fr.	Monroe
Rolfs, Herman	Col. Fr.	Pensacola, Fla.
Root, Olive Ann	Col. Fr.	Jackson
Rouse, Anne Ruth	Col. Soph.	Saucier
Rouse, Frances Lurette	Col. Fr.	Saucier
Rouse, Mildred Velma	H. S. Jr.	Lucedale
Rouse, Roderick L.	Col. Soph.	Saucier
Royster, Francis Brooks, Jr.	H. S. Sr.	Biloxi

Ruble, Daniel Clark	Col. Fr.	Mississippi City
Rustin, Mary Walean	Special	Wiggins
Ryan, Theresa Pauline	Col. Fr.	Biloxi
Sandusky, William N.	Col. Fr.	Gulfport
Saucier, Billy E.	Col. Fr.	Biloxi
Saucier, Evelyn Mae	Col. Soph.	Saucier
Saucier, Herschel Devan	H. S. Jr.	McHenry
Saucier, Myra	Col. Soph.	Saucier
Saucier, Mary Walline	H. S. Sr.	Perkinston
Saucier, William	Col. Soph.	Saucier
Savage, Womack Horace	Col. Fr.	Pascagoula
Scarborough, Guy A.	Col. Fr.	Saucier
Scarborough, Patty	Col. Fr.	Biloxi
Schanbacher, Mary Lou	Col. Soph.	Gulfport
Scheffler, Wilbert Robert	Col. Fr.	Pascagoula
Scholtes, Gregory M.	Col. Fr.	Pascagoula
Scholtes, Robert Martin	Col. Fr.	Pascagoula
Schott, John Warley	Col. Fr.	Wiggins
Seay, Houston K.	Col. Fr.	Pascagoula
Seidler, Richard Calvin	Col. Fr.	New Orleans, La.
Segler, Ralph Julian	Col. Fr.	Panama City, Fla.
Sepich, Billie Jean	Col. Soph.	Mississippi City
Seymour, Lee Charles, Jr.	Col. Fr.	Biloxi
Shattles, Herschel Ray	Col. Fr.	Brooklyn
Shepard, Flora May	Col. Fr.	Gulfport
Shincock, William	Col. Fr.	Pascagoula
Simmons, Blanche Veloris	Col. Fr.	Moss Point
Simmons, Donald O.	Col. Fr.	Gulfport
Simpson, Edwin Winsley	Col. Soph.	Pensacola, Fla.
Slattey, Ellis Kerry	Col. Fr.	Moss Point
Slattey, Jan Trigg	Col. Fr.	Moss Point
Smith, George Robert, Jr.	Col. Fr.	Pass Christian
Smith, Louis L., Jr.	Col. Fr.	Lyman
Smith, Mildred	Col. Soph.	Gulfport
Smith, Andrew Thurman	H. S. Jr.	Perkinston
Snoyden, Earl LaRae	Col. Fr.	Gulfport
Solomon, Henry K.	Col. Fr.	Lucedale
Soloman, Lula Mae	Col. Fr.	Lucedale
Soloman, M. D.	H. S. Sr.	Lucedale
Sorrels, Helen Marie	H. S. Jr.	Gulfport
Spence, James Homer	Col. Fr.	Pass Christian
Staehle, William A., Jr.	H. S. Jr.	Bay St. Louis
Stafford, Elvin A.	Col. Soph.	Handsboro
Starr, William H.	Col. Fr.	Gulfport
Stauter, Claude L.	Col. Fr.	Moss Point
Stevens, Harold Wallace	Col. Soph.	Gulfport
Stevenson, Edward Allen	Col. Soph.	Gulfport

Stevenson, Lois	H. S. Sr.	Moss Point
Stevenson, Oscar Earl	Col. Fr.	Moss Point
Stewart, Al T.	Col. Fr.	Gulfport
Stewart, Doris Jean	Col. Fr.	Gulfport
Stewart, John W.	Col. Fr.	Gulfport
Still, Martha Jo Ann	H. S. Sr.	Panama City, Fla.
Stinson, Ruth Carol	Col. Soph.	Lucedale
Stokes, Viola Elizabeth	Col. Soph.	Harold, Fla.
Stonecypher, John Bell	Col. Fr.	Perkinston
Strahan, Howard	H. S. Sr.	Bond
Stringfellow, Harold M.	Col. Fr.	Lucedale
Suggs, Hazel Ann	H. S. Sr.	Gulfport
Sumrall, Dorothy	H. S. Jr.	Perkinston

Tanet, Jeanne Fern	Col. Fr.	Clermont Harbor
Tant, Bette	H. S. Sr.	Hattiesburg
Tarzetti, Carmen	Col. Fr.	De Lisle
Taylor, John Robert	H. S. Sr.	Pascagoula
Taylor, Herbert	Special	Arnudville, La.
Teate, Henry Carrol	Col. Fr.	Pensacola, Fla.
Teter, Anne Pendleton	H. S. Sr.	Bay Minette, Ala.
Thames, Betty Ann	H. S. Sr.	Lyman
Thomas, William C.	Col. Soph.	Moss Point
Thompson, Mary Ruth	Col. Fr.	Gulfport
Torres, Charles Cecil	Col. Fr.	Moss Point
Towsend, Clyde Eugene	Col. Fr.	Gulfport
Troupe, Robert A.	Col. Fr.	Athens, Ala.

Vinson, Lena Louise Col. Soph. New Orleans, La.

Wade, George Newton	Col. Fr.	Gulfport
Walker, Willard	Col. Fr.	Pascagoula
Ward, June Marie	Col. Fr.	Lucedale
Ward, Vivian	Col. Fr.	Lucedale
Watson, William White	Col. Soph.	Lyman
Weekley, Robert S.	H. S. Jr.	Long Beach
Weeks, Albert Colmer	Col. Fr.	Howison
Wellborn, Christine	Col. Fr.	Pascagoula
Wentzell, J. E.	Col. Fr.	Biloxi
West, Hubert L.	Special	Perkinston
West, Lois L.	H. S. Jr.	Perkinston
West, William	H. S. Jr.	Biloxi
Wheat, Earl R.	Col. Fr.	Pensacola, Fla.
White, Harold Taylor	Col. Soph.	Wiggins
White, Jack D.	Col. Soph.	Ocean Springs
White, James Noel	Col. Soph.	Wiggins
Wilhite, Franklin Edward	H. S. Sr.	Pascagoula
Wilkerson, Buford Hayes	Col. Fr.	Gulfport

Wilkerson, Henry Lee	Col. Fr.	Gulfport
Wilkerson, John F.	Col. Fr.	Gulfport
Williams, Billie Ruth	H. S. Sr.	Bond
Williams, Horace	Col. Fr.	Biloxi
Williams, Jack	Col. Fr.	Wiggins
Williams, Jessie	Col. Fr.	Gulfport
Williams, Pat McCall	Col. Fr.	Cottandale, Fla.
Wilson, Darrell Emerson	Col. Fr.	Pascagoula
Wilson, Harry W.	Col. Fr.	Hansboro
Wilson, Julian L.	Col. Fr.	Pensacola, Fla.
Wilson, Theresa Ann	Col. Soph.	Perkinston
Wilson, Winfred L.	Col. Fr.	Hansboro
Wiltz, Ruth Margaret	Col. Fr.	Biloxi
Wise, James	Col. Fr.	Biloxi
Wise, John Phillips	Col. Fr.	Biloxi
Wright, Alfred Jackson	Col. Fr.	Gulfport

Yarborough, Lawrence E. Col. Fr. Pass Christian

ENROLLMENT SUMMARY

Regular Session, 1946-47

College:		High School:	
Sophomores	85	Seniors	48
Freshmen	314	Juniors	47
Specials	16	Specials	7
Total	415	Total	102

Grand Total 517

Summer Session, 1946

College:		High School	
Sophomores	18	Seniors	32
Freshmen	71	Juniors	37
Specials	23	Sophomores	13
		Freshmen	14
		Specials	7
Total	112	Total	103

Grand Total 215

517
732

FIRST SEMESTER—1947-48

	1	2	3	4	5	6	7	8	
Agr. Lec.	52-MW	50-MW	12-MW	10-MW					Gammage
Agr. Lab.	52-Th	52-Th	12-Th	12-Th					
Agr. Lab.	50-F	50-F	10-F	10-F					
Agr. Lec.	II-TTF	I-F	I-MW						Blakeney
Agr. Lab.	II-MW	II-MW							
Agr. Lab.		I-TT	I-TT						
Biol. Lec.	10-TT								Patten
Biol. Lab.	10-WF (1)	10-WF	10-Th S (2)	10-Th S		10-TT (3)	10-TT		Patten
Biol. Lec.	10-TT (4)	10-TT				10-TT			DeLano
Biol. Lab.						10-MW (5)	10-MW		DeLano
Health							10-MW		Patten
			10-Th S	10-WF					DeLano
Chem. Lec.			10-TT	50-TT					Faust
Chem. Lab.	10-Th S (1)	10-Th S				10-MW (2)	10-MW		Faust
Chem. Lab.	50-WF (1)	50-WF	50-MW (2)	50-MW					Faust
Chem. Lec.					10-MW				Frantzen
Chem. Lab.					10-TT (3)	10-TT	10-TT (4)	10-TT	Frantzen
Physics Lec.		Chem.	III		50-TTS	IV			Paravis
Physics Lab.				50-F	50-F				
Ho. Ec. Lec.	II	I			50-M	10-M			McInnis
Ho. Ec. Lab.	II	I			10-TT	10-TT			
Ho. Ec. Lab.					50-WF	50-WF			

FIRST SEMESTER—1947-48

	1	2	3	4	5	6	7	8	
Acc. Lec.			10-MW				10-MW		Gregory
Acc. Lab.			10-Tu	10-Tu		10-Th	10-Th		
S'hand	10-TTS	10-MFW							
Bus. Law				10-MWF					
D'phone						13-MWF			
Typing	10-MTWTFS	10-MTWTFS	I		MTWTFS	S'hand I			Haley
English	10-MWF		50-TTS	10-TTS	10-MWF	12-TT	50-MWF		Harrell
		10-TTS	10-MWF			10-MWF	10-MWF	16-Night	Young
			III	IV		III			Crowe
					IV				Cooley
								14-Night	Stroud
French		10-TTS				50-MWF			Cooley
Spanish	50-MWF			10-TTS					
Ed. and Psy.	10-TTS	50-TTS		50-MWF			10-MWF		Stroud
Math.		14-TTS	11-TTS	11-MWF		52-MWF	12-MWF		Gregory
	10-TTS	10-MWF	10-TTS		10-MWF				Stonestreet
	III	III				IV	III		Walker
		IV							Paravis
So. Studies	10-MWF				10-MWF				Rivers
	50-TTS								Rivers
	12-TTS		10-TTS	10-MWF		11-MWF	11-MWF		Court
Am. Gov't.			IV						Walker
Int. Rel.				III					Walker
Am. History			III			III			Blackwell

FIRST SEMESTER—1947-48

	1	2	3	4	5	6	7	8	
Pub. Sch. Mu.	50-TTS								Ware
Mu. Appr.						10-MWF			Ware
Mu. History							50-MWF		Ware
Theory				50-MWF					Canady
Harmony	11-TTS								
Phy. Ed. (B)		10-MW	10-MW-TT		12-TT	10-TT	H.S.-MW		Vesterfield
Phy. Ed. (G)	10-MW	50-TT	12-MW-52-TT	10-TT	50-TT	10-MW	H.S. TT		Morgan
Lib. Sci.		10-Th	10-Th	10-M	10-W		10-Th		Faucette
					10-MW				Jones
Bible						12-TT			Fulgham
Wood M. Lec.	50-M-104	104	104	104		104			Smith
Wood M. Lab.	50-TT	50-TT							Smith
Shop Lec.	I-D	I-D	10-M						Smith
Shop Lab.			10-WF	10-WF					Smith
Sheet M. Lec.	103	103	10-M-103	103		103			Nye
Sheet M. Lab.			10-WF	10-WF					Nye
Auto M. Lec.	I-D	I-D	10-Tu						Nye
Auto M. Lab.	101	101	10-Th S-101	10-Th S-101		101			Nye
Mech. Dr.					10-MW (1)-TT (2)	10-MW-TT	10-TT (3)	10-TT	Nye
Radio Lec.	I-D	I-D	10-M						Grayson
Radio Lab.			10-WF	10-WF					
Radio	102	102	102	102		102			

SECOND SEMESTER—1947-48

	1	2	3	4	5	6	7	8	
Agr. Lec.	53-MW	51-MW	13-MW	11-MWF					Gammage
Agr. Lab.	53-Th	53-Th	13-Th	13-Th					
Agr. Lab.	51-F	51-F							
Agr. Lec.	11-TTF	1-F	1-MW						Blakeney
Agr. Lab.	11-MW	11-MW							
Agr. Lab.		1-TT	1-TT						
Biol. Lec.	11-TT								Patten
Biol. Lab.	11-WF (1)	11-WF	11-Th S (2)	11-Th S		11-TT (3)	11-TT		Patten
Health				11-WF			11-MW		Patten
Biol. Lec.				50-MWF		11-TT			DeLano
Biol. Lab.	11-TT (4)	11-TT	50-Tu	50-Tu		11-MW (5)	11-MW		DeLano
Health			11-Th S						DeLano
Chem. Lec.			11-TT	51-TT					Faust
Chem. Lab.	11-Th S (1)	11-Th S	51-MW (2)	51-MW	11-MW (2)		11-MW		Faust
Chem. Lab.	51-WF (1)	51-WF							Faust
Chem. Lec.					11-MW				Frantzen
Chem. Lab.					11-TT (3)	11-TT	11-TT (4)	11-TT	
Physics Lec.			Chem. III		51-TTS	Phy. IV			Paravis
Physics Lab.				51-F	51-F				
Ho. Ec. Lec.	II	I			51-M	11-M			McInnis
Ho. Ec. Lab.	II	I			11-TT	11-TT			McInnis
Ho. Ec. Lab.					51-WF	51-WF			McInnis

SECOND SEMESTER—1947-48

	1	2	3	4	5	6	7	8	
Acc. Lec.			11-MW				11-MW		Gregory
Acc. Lab.			11-Tu	11-Tu		11-Th	11-Th		Gregory
S'hand	11-TTS	11-MWF							Gregory
Sec. P. and D'ph.			Sec. Pr.	11-MWF	D'phone	13-MWF			Gregory
Typing	11-TTS	11-MTWTFS	I		11-M and MTFS	S'hand I			Haley
English	11-MWF		51-TTS	11-TTS	11-MWF	13-TT	51-MWF		Harrell
		11-TTS	11-MWF			11-MWF	11-MWF	17-Nights	Young
								15-Nights	Stroud
			III	IV		III			Crowe
French		11-TTS		Eng.	IV	51-MWF			Cooley
Spanish	51-MWF			11-TTS					
Ed. and Psy.	11-TTS	51-TTS		51-MWF			11-MWF		Stroud
Math.		50-TTS	11-MWF		11-MWF	53-MWF	13-MWF		Gregory
	11-TTS	11-MWF	10-TTS	10-MWF					Stonestreet
	III	III				IV	III		Walker
		IV							Paravis
So. Studies	11-MWF				11-MWF				Rivers
	51-TTS								Rivers
	13-TTS		11-TTS	11-MWF		10-MWF	10-MWF		Court
Ec. and Geog.			IV	III					Walker
Am. History			III			III			Blackwell

SECOND SEMESTER—1947-48

	1	2	3	4	5	6	7	8	
Pub. Sc. Mu.	51-TTS								Ware
Music Appr.						11-MWF			Ware
Mu. History							51-MWF		Ware
Theory				51-MWF					Canady
Harmony	50-TTS								Canady
Phy. Ed. (B)		11-MW	11-MW-TT			11-TT	H.S. MW		Westerfield
Phy. Ed. (G)	11-MW	51-TT	13-MW-53-TT	11-TT	51-TT	11-MW	H.S. TT		Morgan
Tch. Sci.		10-Tu	10-Th		10-W				Faucette
Bible					11-MW				Jones
						13-TT			Fulgham
Wood W. Lec.	51-M-104	104	104	104		104			Smith
Wood W. Lec.	51-TT	51-TT							Smith
Shop Lec.	I-D	I-D	11-M						Smith
Shop Lab.			11-WF	11-WF					Smith
Sheet M. Lec.	103	103	11-M-103	103		103			Nye
Sheet M. Lab.			11-WF	11-WF					Nye
Auto. Lec.	I-D	I-D	11-Tu						Nye
Auto Lab.	101	101	11-Th S-101	11-Th S-101		101			Nye
Mech. Dr.					11-NW-TT	11-MW-TT	11-TT	11-TT	Nye
Radio	I-D	I-D	11-M						Grayson
Radio Lab.			11-WF	11-WF					Grayson
Radio	102	102	102	102		102			Grayson

APPLICATION BLANK FOR ADMISSION
PERKINSTON JUNIOR COLLEGE

_____, 194_____

Name _____ Date of Birth _____

Name of parent or guardian _____

Post Office _____ County _____

What school did you last attend? _____

When? _____ What grade were you in? _____

Did you complete this grade? _____ If not, how much of the work
did you finish? _____

What grade do you think you can enter? _____

(See course of study in catalog)

Have you ever been suspended or expelled from school? _____

If so, why? _____ Do you smoke cigarettes? _____

Do you agree to refrain from the use of profane language, gambling,
and intoxicating drinks while connected with this institution? _____

If you enter this school do you promise to be a diligent student, to
be loyal to the institution, and obey all regulations? _____

Who will pay your expenses while here? _____

(Signed) _____

(Name of Applicant)

NOTE—The answers to the questions must be written by applicant.

This application must be filled out and mailed to A. L. May, Perkinston, Mississippi, together with remittance of the \$10.00 matriculation fee.

If you are entering this school for the first time, please have your high school principal forward immediately, direct to the Registrar of this college, a transcript of your record. This transcript should be sent us before you arrive for classification.

You are required to bring a certificate from health authorities or from a doctor indicating the results of a Wasserman test or other blood test. You will also bring a doctor's certificate of typhoid fever immunization and small pox vaccination. A health certificate, to be valid must show the date of the Wasserman or other blood test, the typhoid immunization, and the small pox vaccination. There will be no exceptions to these requirements. These certificates must be presented on entrance. Write for regular certificate form.



Lobby Teachers Dormitory



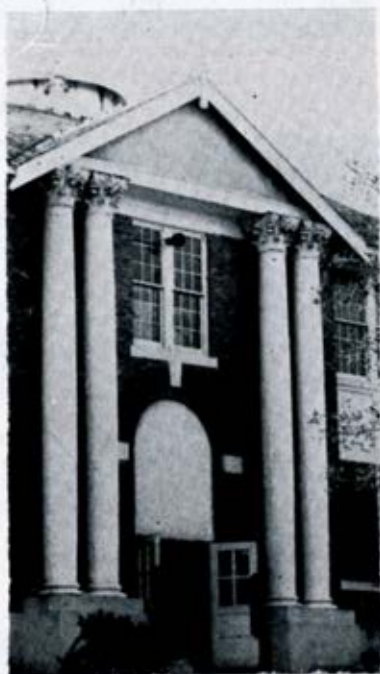
Accounting Laboratory



A Girls' Room Harrison Hall



Above—
Freshman
Dormitory



Right—
Science
Building

Below—
Girls'
Ensemble

